

WHATCOM COUNTY
Planning & Development Services
5280 Northwest Drive
Bellingham, WA 98226-9097
360-778-5900, TTY 800-833-6384
360-778-5901 Fax



Mark Personius, AICP
Director

Forestry Advisory Committee **Meeting**

LOCATION

**Hybrid Meeting: Zoom (details below) and
Northwest Annex Conference Room
Whatcom County Planning and Development Services
5280 Northwest Drive, Bellingham, WA 98226**

Date: August 6, 2024

Time: 4:00-6:00 P.M. Pacific Time PM Pacific Time (US and Canada)

Whatcom County PDS is inviting you to a scheduled in person or Zoom meeting.

Join Zoom Meeting

<https://us02web.zoom.us/j/87106867064?pwd=b0NLTIZnTTZqOHBGQk1mY2FQbWFKQT09>

Meeting ID: 871 0686 7064

Passcode: 722152

One tap mobile

+12532050468,,87106867064#,,,,*722152# US

+12532158782,,87106867064#,,,,*722152# US (Tacoma)



Forestry Advisory Committee Meeting Agenda

August 6, 2024

4:00-6:00 P.M.

1. Roll call/Determination of Quorum
2. Agenda Review & Approval
3. Approval of 6/4/24 meeting summary
4. Open Public Session
5. Reports (20 minutes)
 - DNR/BNR (McDonald)
 - Forestry Policy Board (Gold)
 - Forest Resilience Task Force (Petroske/McDonald) (30 min., see attachment)
6. Old Business
 - None
7. New Business
 - Briefing on Docket Item PLN2024-00007, Reviewing allowed uses in the Heavy Impact Industrial district within a city's Urban Growth Area (Strong)
8. Announcements
9. Adjournment

Attachments:

- Draft 6/2/24 meeting summary
- DNR Landscape Assessment to Meet Older Forest Targets in Western Washington Presentation
- Forest Resilience Task Force Homework
- Treasurer's Reports
 - Forest Excise Tax (TAV) Distribution 2017-2023
 - FBL Receipts and Distributions 2017-2023

Individuals who require special assistance to participate in the meetings are asked to contact us at least 96 hours in advance. The staff contact at Whatcom County Planning and Development Services is Cliff Strong, cstrong@co.whatcom.wa.us, 360-778-5942.

Whatcom County Forestry Advisory Committee (FAC)
DRAFT Meeting Summary
June 4, 2024

Start Time:	4:00 p.m.
Location:	Northwest Annex Central Conference Room/Zoom

Attendees – Members	Affiliation	Present	Absent (Excused?)
David New	Small forest landowner	√	
Holly Koon	Small forest landowner	√	
John Gold	Commercial forest landowner	√	
David Janicki	Commercial forest landowner	√	
Matt McGee	Harvester		√ (no)
Quentin Dills	Harvester		√ (no)
Jed Dawson	Citizen w/ forestry expertise	√	
Tracy Petroske	Citizen w/ forestry expertise	√	
Aubrey Stargell	Forest product manufacturer		√ (yes)
Susan David	Forest product manufacturer	√	
Cory McDonald	DNR	√	
Quorum Present			
Electeds			
Staff			
Cliff Strong	W/C PDS	√	
Bennett Knox	W/C P&R	√	
Lauren Templeton	W/C PDS	√	
Public			
Alex Harris	ReSources	√	
Alan Chapman	AAC	√	

Meeting Summary

Chair Gold opened the meeting at 4:02 PM.

Roll Call and Determination of a Quorum

Roll was called and a quorum was present.

Agenda Review & Approval

The Chair added two items to the agenda, moved public comments to after subcommittee reports, and it was approved.

Approval of Minutes

The meeting summary of 5/7/24 was approved.

Subcommittee Reports

Added: Parks & Rec Forestry Planning

Regarding the Lake Whatcom Forest Management Plan, Parks & Rec Director Knox reported that though consultant interviews were held, an opportunity has arisen to partner with the City of Bellingham by including their 3,000 acres into the project. So now they're revising the project and it will have to be rebid. A new RFP should be issued within 2 weeks, and a bid awarded by end of July. Chair Gold offered the FAC's expertise in reviewing the RFP and/or sitting on the interview panel. Director Know said he'll

send them the current RFP, which should be similar to the new one, for comment. And he'll consider the offer to help interview.

Regarding P&R's new forester position, they should have that filled within the next 2 months.

DNR/BNR

Cory McDonald reported that the BNR just held their meeting today, and he didn't attend, so not much to report. John added that their meeting was held on the eastside, and concentrated on eastside issues, especially fire, and they received over 1,000 public comments. David added that he actually testified. There was a large showing of junior taxing districts.

Forest Resilience Task Force

Tracy Petroski reported that the facilitator contract has been approved by the Council, but that the TF hasn't met yet.

Open Public Session

Alex Harris reported that he's leaving RE Sources as he has taken a job with Planning and Development Services to help with the conservation easement program. He'll be focusing on forestry resource lands and expects to continue to be involved with the FAC.

Old Business

ADDED: FAC Attendance

Following last month's discussion about one of their members no longer being able to participate and the FAC wanting to refill the position, Cliff had notified Council staff, but they insisted on receiving a resignation letter before they open the position. However, the FAC's business rules clearly state that upon missing four consecutive meetings, unexcused, the FAC may inform the Council of a need for a replacement.

MOTION: Approve Chair Gold to send a letter to the Council informing them of the situation and requesting that the process for refilling the position commence. Seconded. Approved 6-0-5.

Review of 4th section of the draft Whatcom Forestry Profile

Holly Koons reviewed her updated draft portion of the Whatcom Forestry Profile regarding the state of forestry in Whatcom County.

(A 12-minute recess was called due to technical issues.)

Discussion ensued, with Holly focusing on recent updates to her paper, though there is still a lot to accomplish.

Holly also raised the issue that while the Treasurer has provided the timber sales revenue data requested, she still has not received the excise tax data, which is also needed for her report. There was discussion as to how to handle this and it was suggested that Cliff attempt to set up a meeting with Karen Thomas, John Gold, and himself to discuss. If not accomplished by mid-July, Holly will file a PDR.

New Business

ADDED: July Meeting

Chair Gold suggested canceling the July 2nd meeting, since it falls within the holiday week. Discussion ensued.

MOTION: Cancel the July 2nd meeting. Seconded. Motion carried unanimously.

Announcements

- Holly asked about reorganizing the documents hosted on the FAC webpage, aligning them to the meetings at which they were presented. Cliff agreed that this should be done, and in fact had already discussed it with admin staff. He will move it forward.
- John reminded everyone about the Woods Tours this Friday and the Deming Log Show this weekend.

Adjournment

Chair Gold adjourned the meeting at 6:04 PM. The next meeting is on August 6, 2024, 4-6pm; Zoom and Northwest Annex Conference Room.



Landscape Assessment to Meet Older Forest Targets in Western Washington

Board of Natural Resources
July 2, 2024
Cameron Crump



Agenda

- Older Forest Definition
- DNR's Authorizing Framework
- DNR Policy for Sustainable Forests (PSF)
- 1997 Habitat Conservation Plan (HCP)
- Landscape Assessment Process
- Results

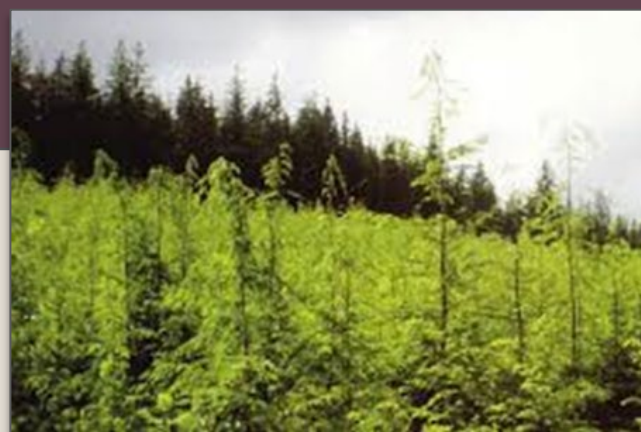


Stand Development Stages

- Foundation of Ecological Forestry (*Carey, Franklin, et al.*)
- Interrelationships of biodiversity, function, and structure
- Use to assist in silviculture decision making

	Summarized Stand Development Stage	Stand Development Stage
Less Complex Forest	Ecosystem Initiation	Ecosystem Initiation
	Competitive Exclusion	Sapling Exclusion
Pole Exclusion		
Large Tree Exclusion		
Understory Development		
Botanically Diverse		
More Complex Forest	Structurally Complex	Niche Diversification
		Fully Functional

Older Forests



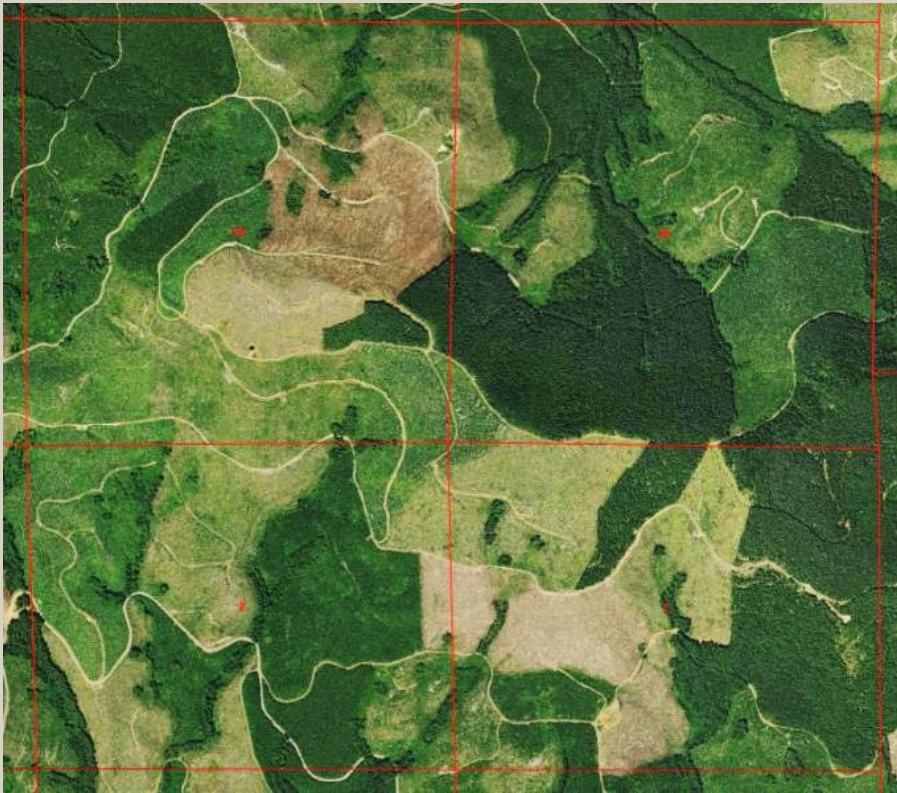
Landscapes Reflect Management Goals & Values



USFS



DNR

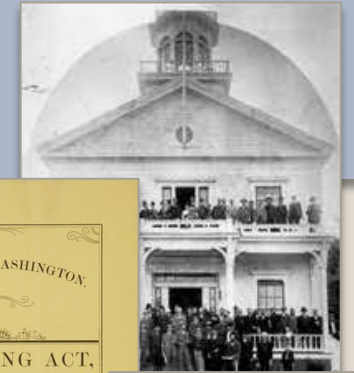


Private Ownership



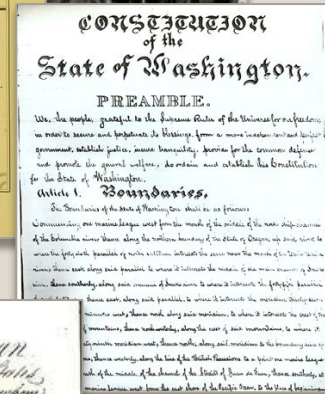
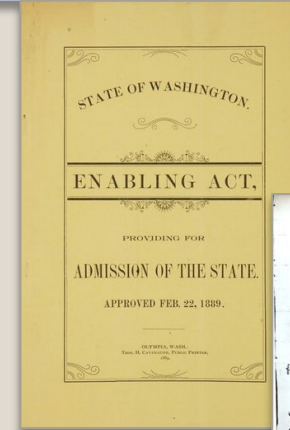
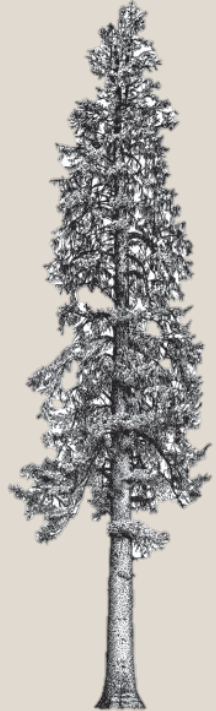


DNR's Authorizing Framework



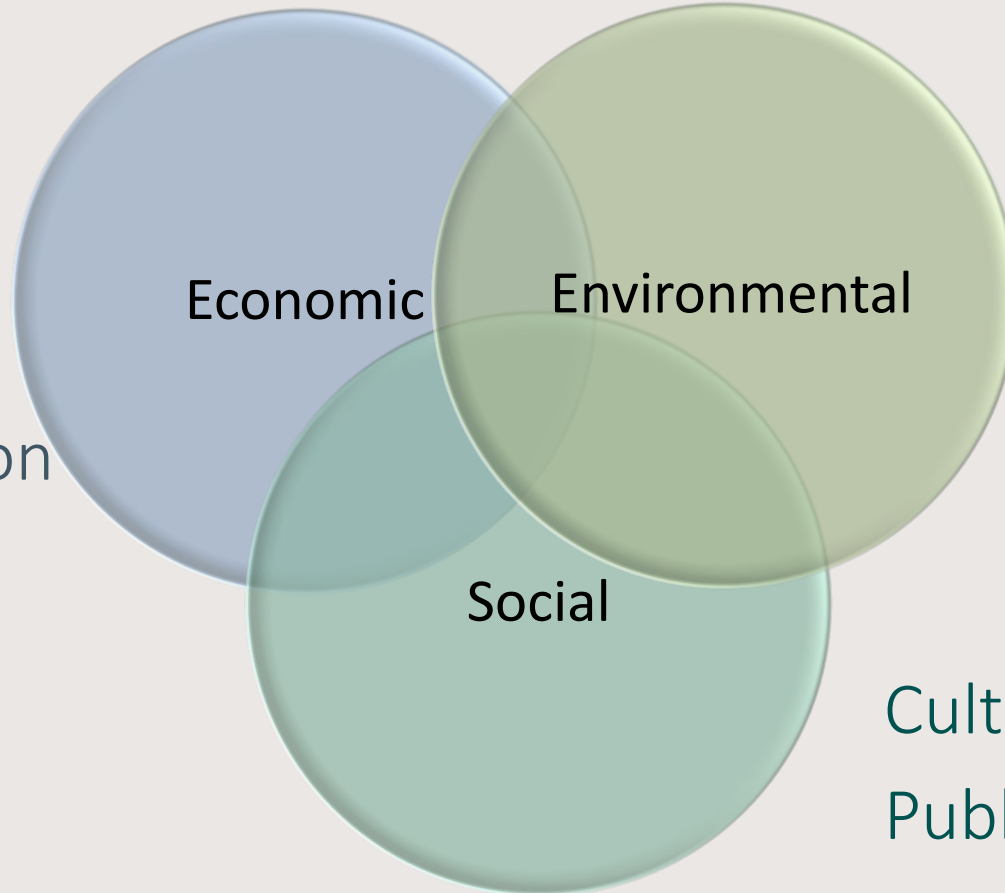
Policies comply with a Legal Framework

- Enabling Act ¹⁸⁸⁹, Constitution ¹⁸⁸⁹
- Federal Laws, e.g. Endangered Species Act ¹⁹⁷³
- Tribal Treaties ¹⁸⁵⁴⁻⁵⁶
- Powers of the Board (RCW 43.30.215) ¹⁹⁵⁷
- Multiple Use (RCW 79.10.100 - .120) ¹⁹⁷¹
- Sustainable Harvest (RCW 79.10.300 - .340) ¹⁹⁷¹
- Laws of General Applicability





Policy Framework - Sustainability



Revenue Generation
Support Local
Economies



Healthy ecosystems
Habitat conservation
Watershed protection

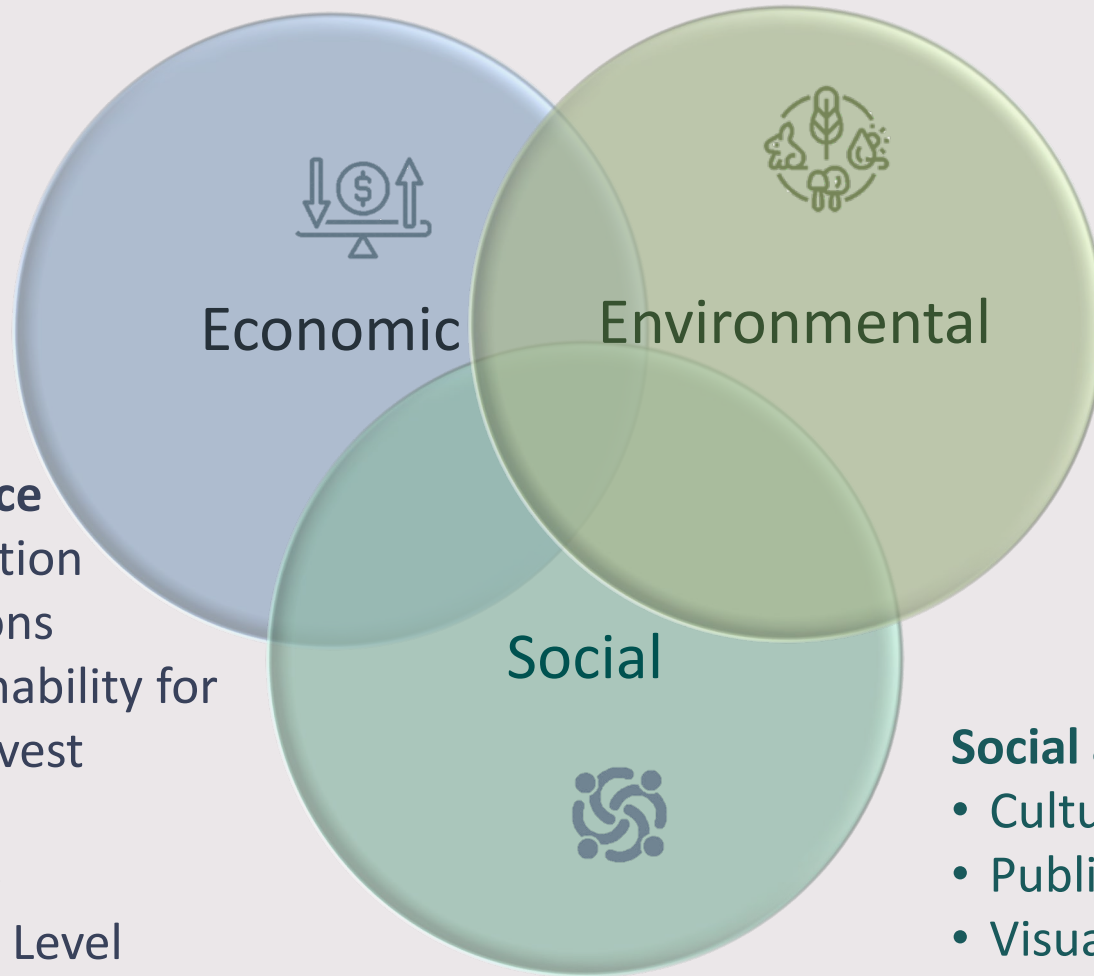
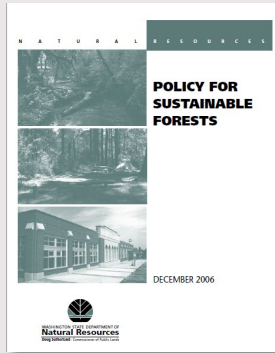


Cultural and Historical Resources
Public Access and Use
Supporting Critical Local Services





Policy for Sustainable Forests (2006)



Economic Performance

- Financial Diversification
- Financial Assumptions
- Definition of Sustainability for the Sustainable Harvest Calculation
- Recalculation of the Sustainable Harvest Level
- Harvest Deferral Designations

Forest Ecosystem Health and Productivity

- Forest Health
- Catastrophic Loss Prevention
- Old-Growth Stands in Western Washington
- Wildlife Habitat
- Watershed Systems
- Riparian Conservation
- Special Ecological Features
- Genetic Resource

Social and Cultural Benefits

- Cultural Resources
- Public Access and Recreation
- Visual Impacts
- Local Economic Vitality

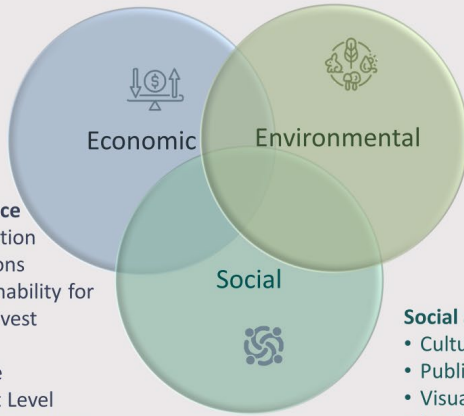




Policy for Sustainable Forests - Implementation



Policy for Sustainable Forests (2006)



Economic Performance

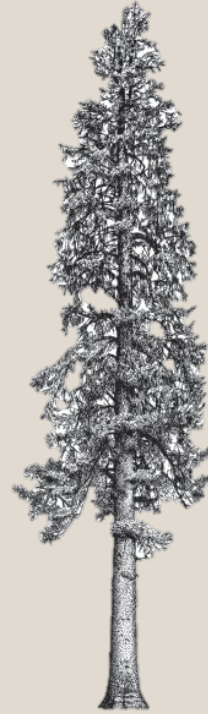
- Financial Diversification
- Financial Assumptions
- Definition of Sustainability for the Sustainable Harvest Calculation
- Recalculation of the Sustainable Harvest Level
- Harvest Deferral Designations

Forest Ecosystem Health and Productivity

- Forest Health
- Catastrophic Loss Prevention
- Old-Growth Stands in Western Washington
- Wildlife Habitat
- Watershed Systems
- Riparian Conservation
- Special Ecological Features
- Genetic Resource

Social and Cultural Benefits

- Cultural Resources
- Public Access and Recreation
- Visual Impacts
- Local Economic Vitality



Implementation

- Forest Land Planning
- General Silvicultural Strategy
- Forest Roads
- Research
- External Relationships
- Implementation, Reporting and Modification of the Policy for Sustainable Forests





Implementing Sustainable Forestry



Silviculture:

The art and science of cultivating forests to achieve objectives

POLICY ON GENERAL SILVICULTURAL STRATEGY

- The department will provide professional management of forested state trust lands through active management and stewardship of the greatest possible portion of these lands.
- The department will carry out active management as an integral part of the department’s fiduciary responsibilities to achieve, on a landscape basis, a combination of forest structures that, over time, provide for broad and balanced economic, ecological and social benefits.
- The department will use intensive and innovative silviculture to guide the desired progression of stand development to simultaneously produce trust revenue and create structural diversity across the landscape.
- The department will target 10-15 percent of each Western Washington *Habitat Conservation Plan* planning unit for “older” forests—based on structural characteristics—over time.
- Through landscape assessments, the department will identify suitable structurally complex forest stands to be managed to help meet older-forest targets. Once older-forest targets are met, structurally complex forest stands that are not needed to meet the targets may be considered for harvest activities. However, old growth is addressed in the Old-Growth Stands in Western Washington policy.



Summary

The department will:

- Provide professional management of forested lands through active management and stewardship of the greatest possible portion of these lands
- Balance economic, ecological and social benefits
- Use intensive and innovative silviculture to produce structural diversity and revenue
- Target 10-15% for “older” forests *over time*, and use landscape assessments to identify stands that help meet targets

[WADNR 2006 Policy for Sustainable Forests, page 47](#)

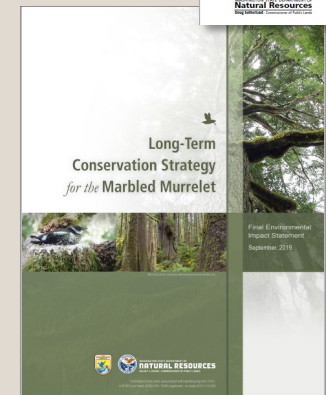
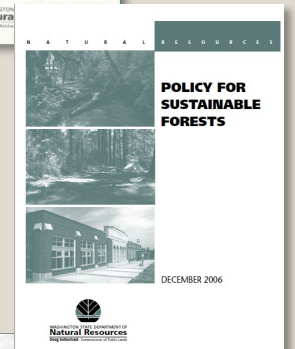
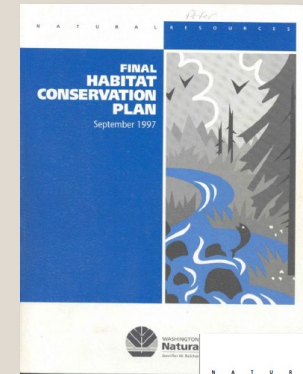




Development of Older Forest Targets

Policies that shaped our current management

- 1997 Habitat Conservation Plan
- 2006 Policy for Sustainable Forests
- 2019 Marbled Murrelet Long-term Conservation Strategy – Habitat Conservation Plan Amendment



Landscape Management Activities under the Habitat Conservation Plan



HCP Multi-species Conservation Strategy
Uncommon Habitat



HCP Riparian Conservation Strategy
Riparian Buffer



Policy for Sustainable Forests
Sustainable Harvest Level



HCP Marbled Murrelet Conservation Strategy
Occupied Site



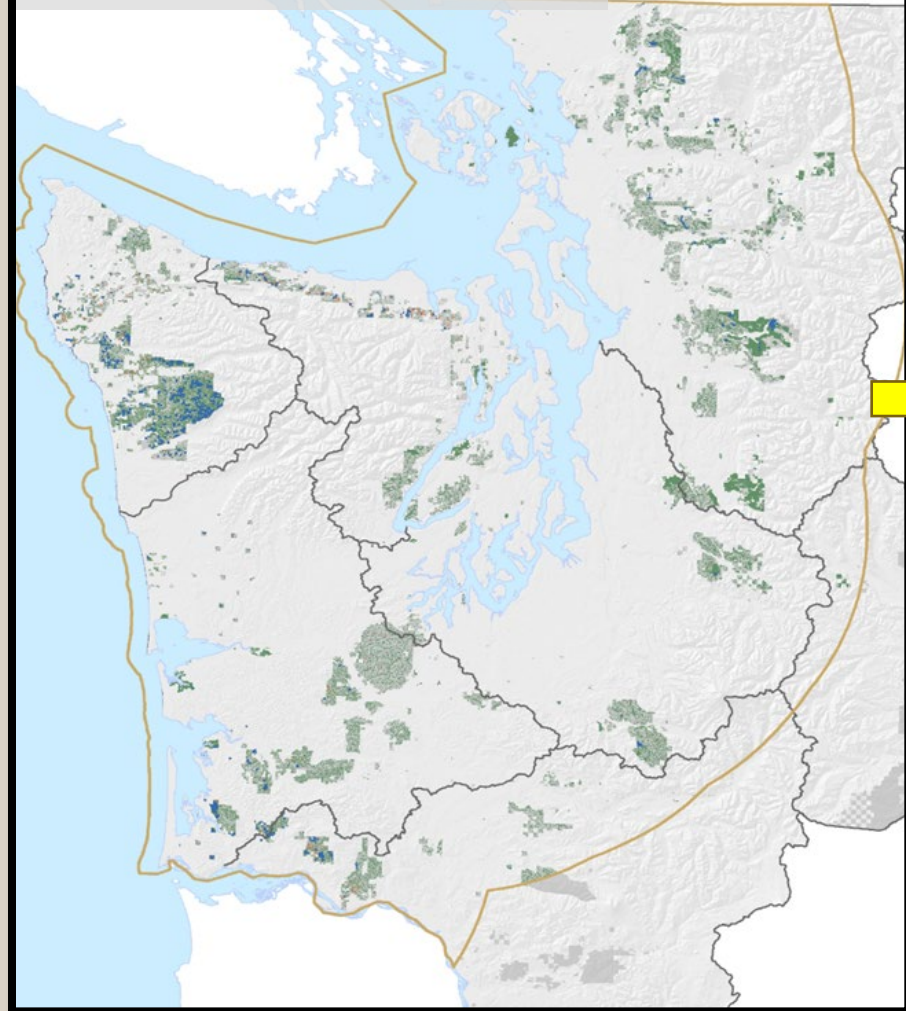
HCP Northern Spotted Owl Conservation Strategy
NRF Habitat



2019 HCP Amendment - By the Numbers

Marbled Murrelet Long-Term Conservation Strategy

No Action – Interim Strategy



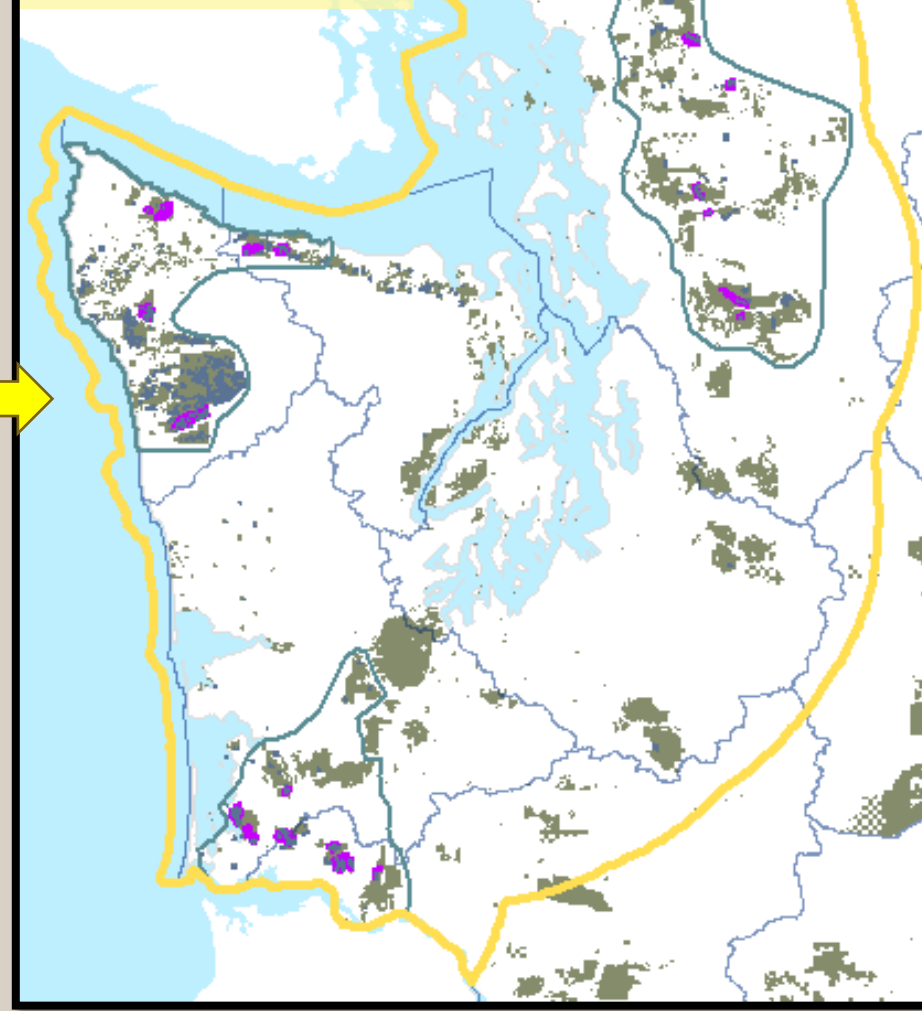
Interim Strategy

- **Site specific conservation:** occupied sites and existing higher quality habitats (33,000 acres)¹
- Marginal habitats available for harvest (35,000 acres)²

HCP Amendment

- **Site specific conservation:** occupied site and buffers (21,000 acres)¹
- **Special habitat area** (47,000 acres)¹
- **Habitat released** (38,000 acres)²
- **Metering**

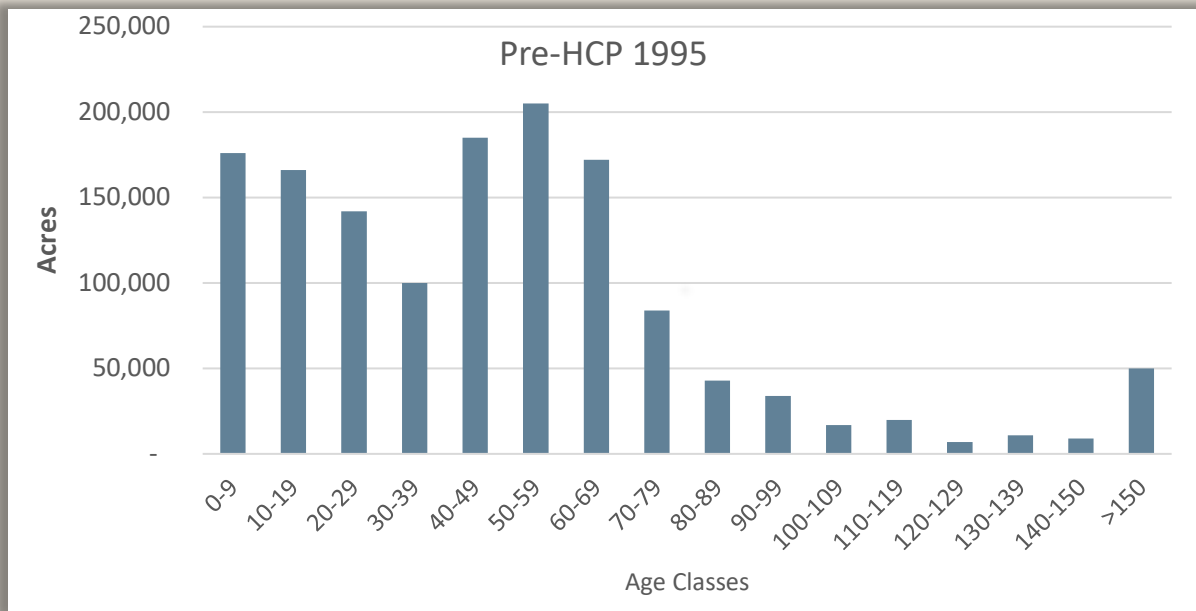
HCP Amendment



Notes:

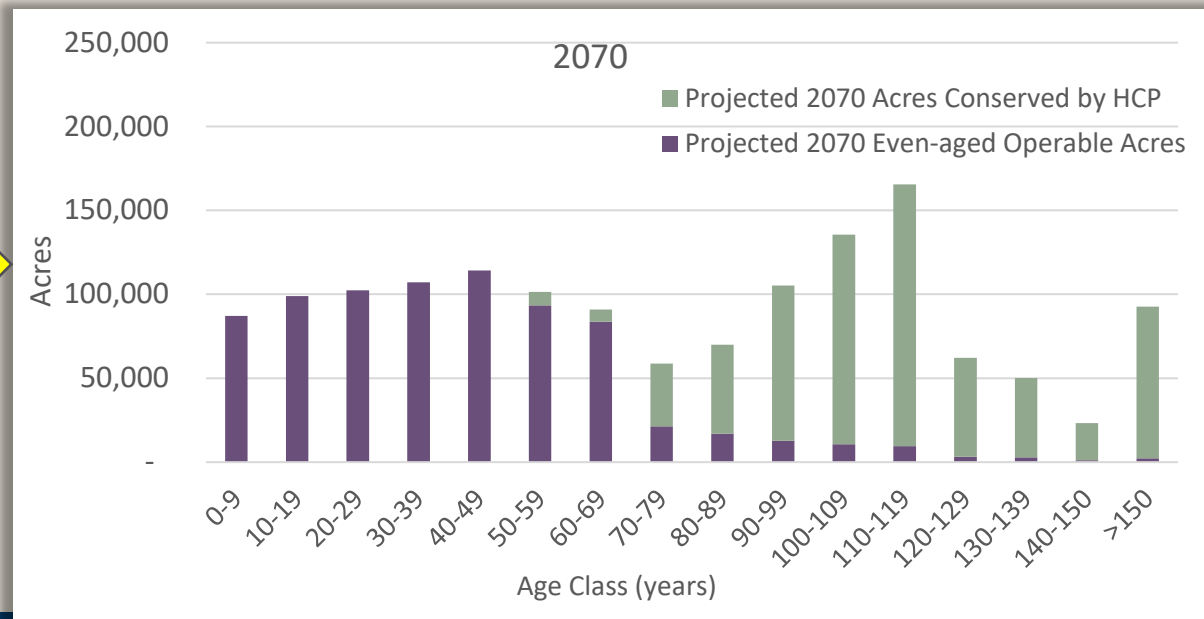
1. [Table 2.2.3. FEIS](#)
2. [Table 4.6.2. FEIS](#)





Age Class Distributions of DNR-Managed Forested Lands in Western Washington under the HCP

Retrospective – Now – Prospective
1995 through 2070



Authorizing Framework & Policy Summary

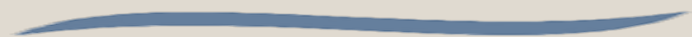
Trust Lands are managed to generate sustainable long-term revenue for the beneficiaries



The Policy Framework is Sustainability



The Habitat Conservation Plan is a landscape approach to protecting species, habitat, and biodiversity



The strategies laid out in the Policy for Sustainable Forests and our HCP assume active harvest in some areas and conservation in others.



Photo: Peter Harrison

2024 Landscape Assessment

Assessment was limited to variable retention harvest deferred acres across the landscape.



Combination of remote sensed inventory (RS-FRIS) and plot inventory utilized.

Older forest attributes were queried and quantified

Growth was modelled and older forests quantified over 100 years.

May 7, 2024

Landscape Assessment to Identify and Manage Structurally Complex Stands to Meet Older-Forest Targets in Western Washington

Washington State Department of Natural Resources | May 7, 2024

Summary

The Washington Department of Natural Resources (DNR) actively manages suitable forest stands to achieve, over time, older-forest structures across 10 to 15 percent of each 1997 *State Trust Lands Habitat Conservation Plan* (HCP) planning unit in western Washington. These “older-forest targets” are described in DNR’s *Policy for Sustainable Forests* (PSF).

This document (2024 Landscape Assessment) provides updated projections on the amount of older-forest stands, as defined by the PSF and discussed in this document, that will develop in western Washington by 2100 as a result of implementing landscape-level management strategies. It describes how DNR has implemented these landscape-level management strategies at the HCP planning unit scale, and how DNR has identified and prioritized suitable stands to be managed to meet older-forest targets.

This document is an update to a landscape assessment titled “Identifying Stands to Meet Older-Forest Targets in Western Washington” dated May 11, 2021 (2021 Landscape Assessment). This 2024 Landscape Assessment:

- Utilizes the same methodologies and data sources as the 2021 Landscape Assessment, which are discussed in Part 2 of this document.
- Refines and updates conservation areas from the 2021 Landscape Assessment, including the addition of newly designated areas, to better identify areas deferred from stand replacement harvest. Conservation areas include areas being conserved under the HCP; Natural Areas such as Natural Resource Conservation Areas and Natural Area Preserves; areas deferred by the PSF; and areas conserved under the Forest Practices Act.
- Updates the results tables from the 2021 Landscape Assessment that detail DNR’s projected timeline for reaching the PSF’s older-forest targets to reflect the refined and updated conservation areas.

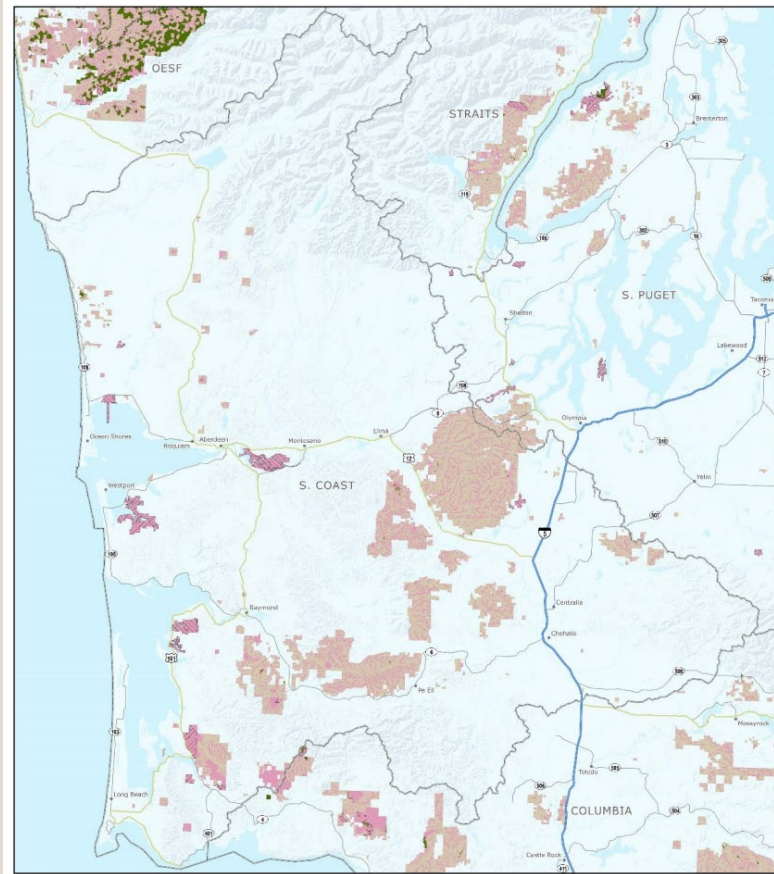
As with the 2021 Assessment, DNR identified and designated the forest stands that will contribute to older-forest targets within its GIS spatial database. The identified stands are also illustrated on the maps in Appendix 2. The identified stands comprise some existing, suitable structurally complex stands, and additional stands suitable to be managed for older-forest targets over time. The identified stands are all located within conservation areas.

DNR 2024 Landscape Assessment

Page 1 of 27

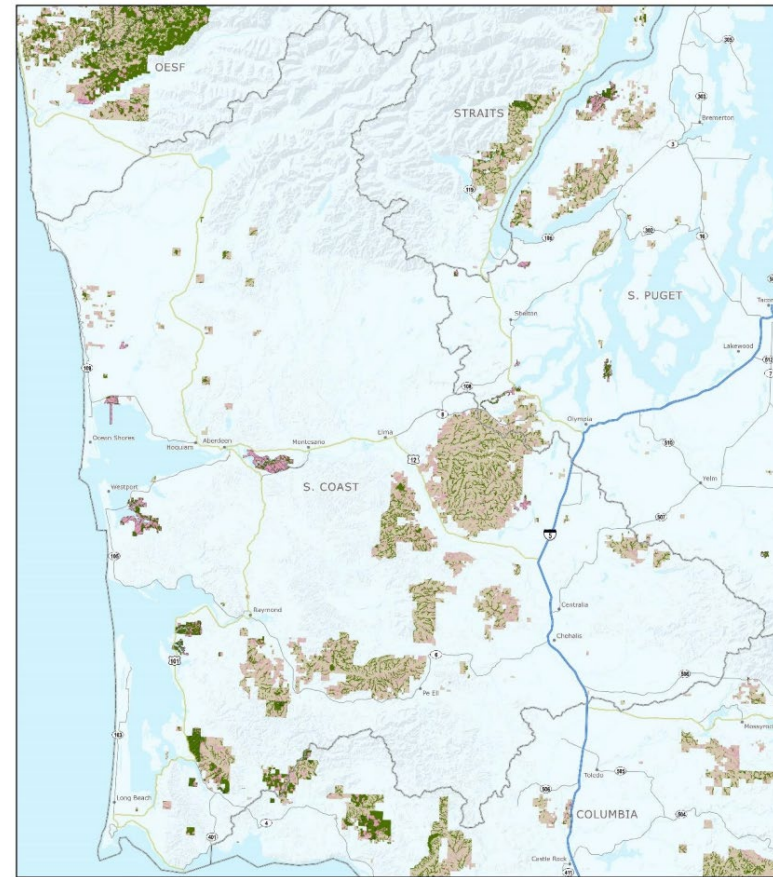


Identification of Stands



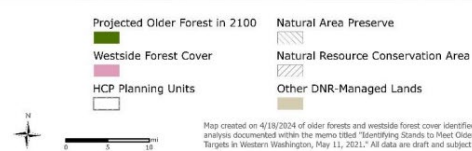
WASHINGTON STATE DEPARTMENT OF
NATURAL RESOURCES

2021 Older Forest
Within Conservation
S. COAST

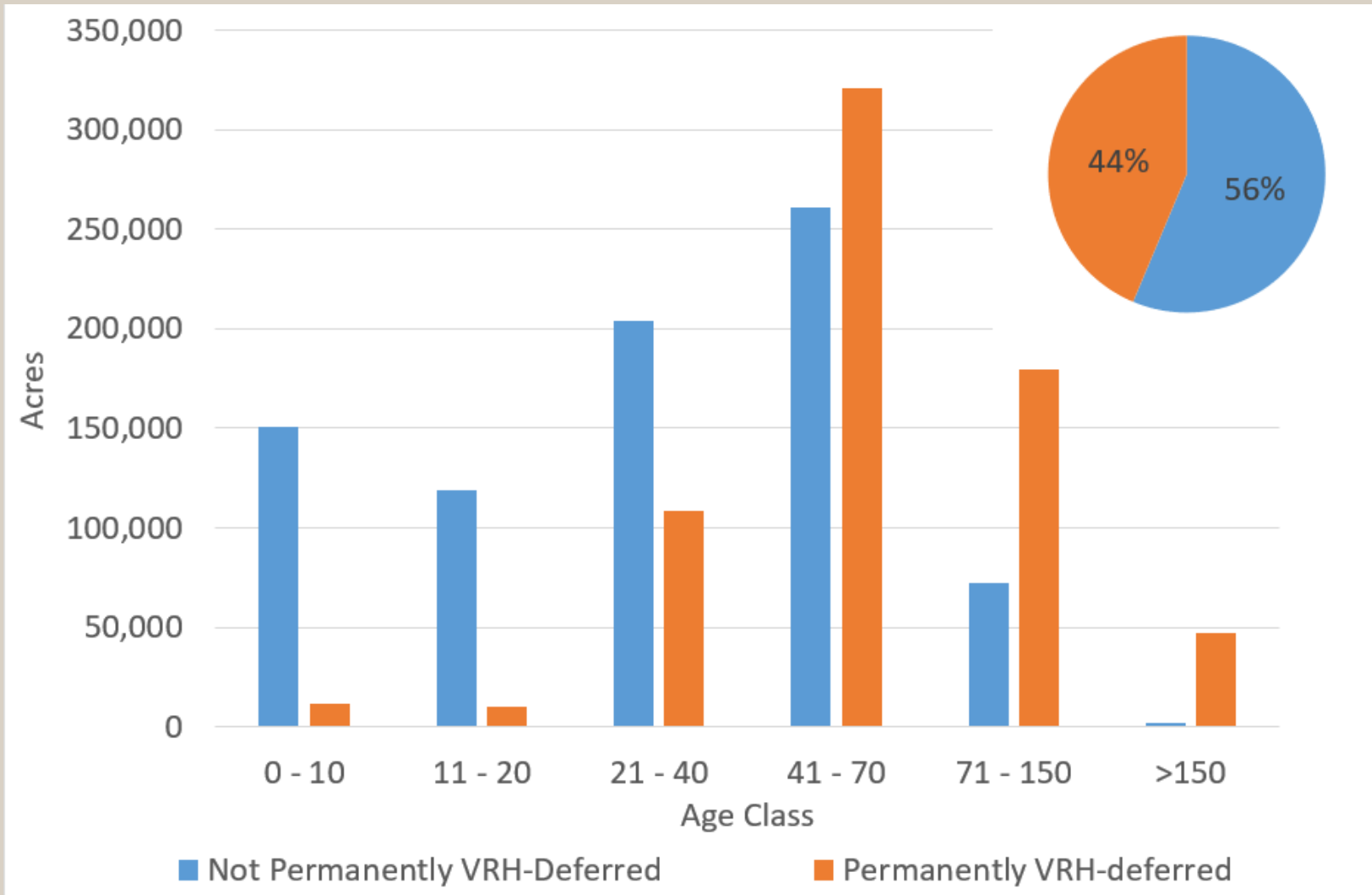


WASHINGTON STATE DEPARTMENT OF
NATURAL RESOURCES

Projected 2100
Older Forest
Within Conservation
S. COAST



Westside VRH- Deferred & Harvestable Land Area



(2021 data) Western Washington Forested Lands



Stand Development Stages

- Foundation of Ecological Forestry (*Carey, Franklin, et al.*)
- Interrelationships of biodiversity, function, and structure
- Use to assist in silviculture decision making

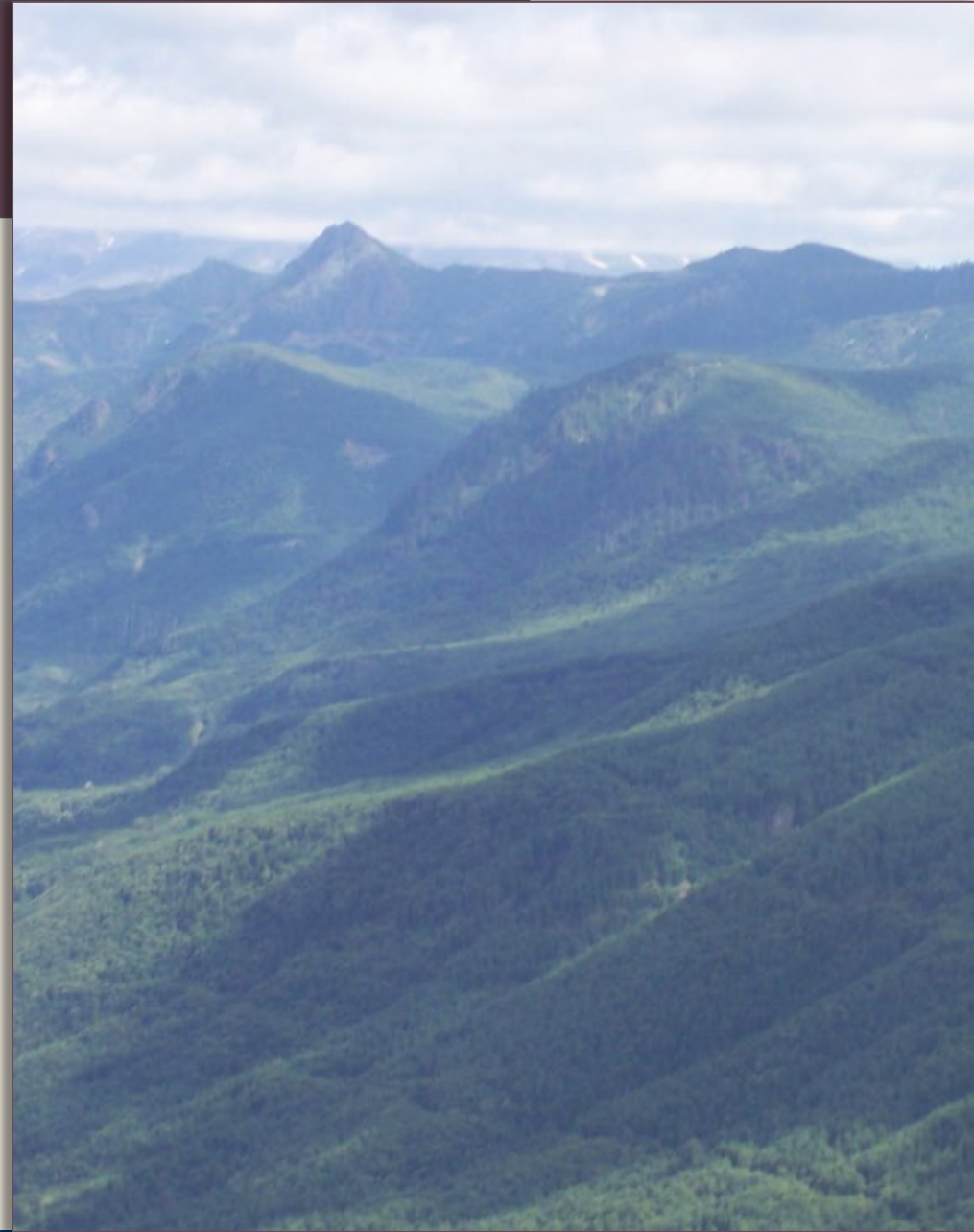
	Summarized Stand Development Stage	Stand Development Stage
Less Complex Forest	Ecosystem Initiation	Ecosystem Initiation
	Competitive Exclusion	Sapling Exclusion
Pole Exclusion		
Large Tree Exclusion		
Understory Development		
Botanically Diverse		
More Complex Forest	Structurally Complex	Niche Diversification
		Fully Functional

Older Forests



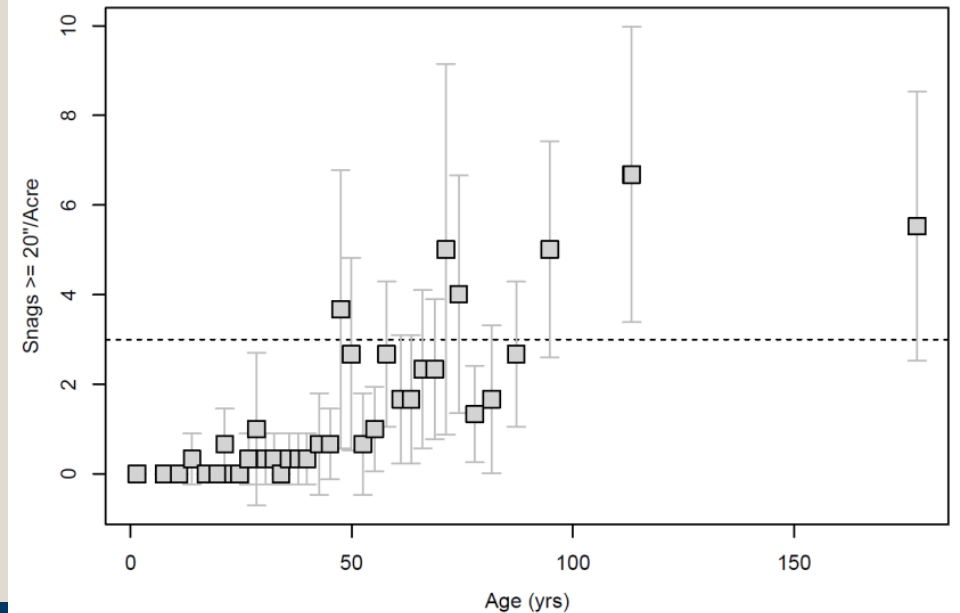
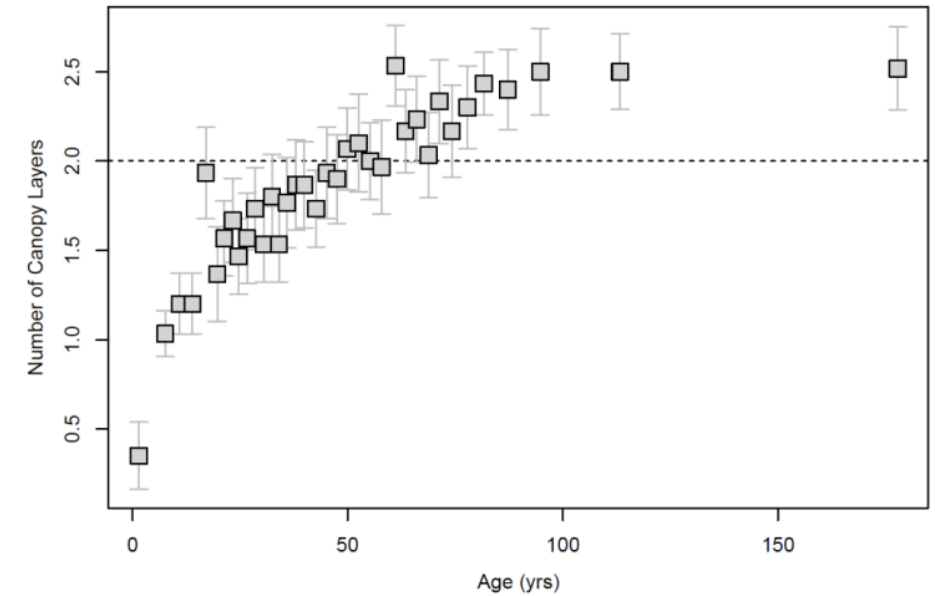
Methodology

- 2004 Sustainable Harvest Calculation
 - Defined and queried
 - Plot-based inventory
- 2021 Landscape Assessment
 - Updated queries for Remote-sensing and plot-based inventory
 - Updated data/GIS delineations
- 2024 Updated Landscape Assessment Utilizing 2021 Methods
 - Updated queries for Remote-sensing and plot-based inventory
 - Updated data/GIS delineations
 - Updated conservation areas – constrained the analysis to Variable Retention Harvest deferred areas only (approximately 681,000 acres on the westside)



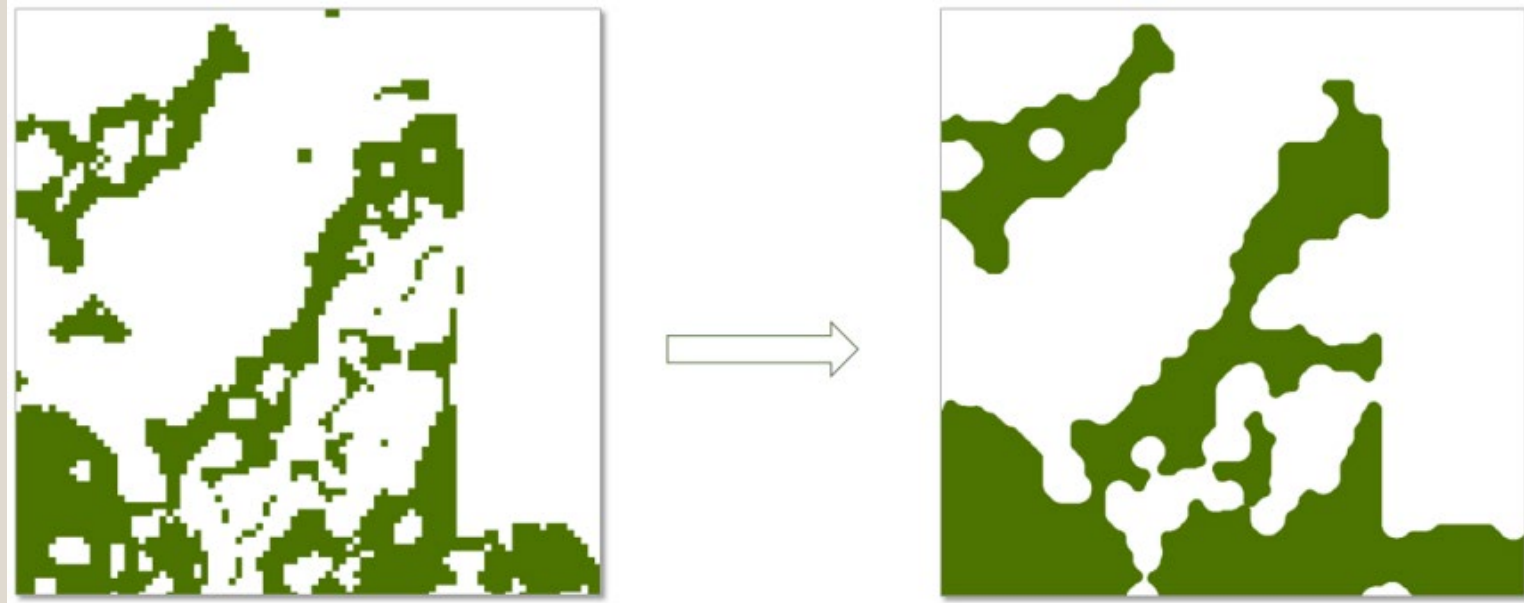
Key Metrics

- Maximum Relative Density Age
- Number of Canopy Layers
- Quantity of Legacy Structures
 - Snags
 - Dead and Down Wood Material



Correction Factors

- Plot Discount
- Disturbance Factor
- Minimum Stand Size
- Active Management



Current and Projected Area of Older Forest Conditions

HCP Planning Unit	Year										
	2021	2030	2040	2050	2060	2070	2080	2090	2100	2110	2120
Columbia	1.1%	1.2%	1.4%	1.8%	2.6%	4.3%	6.8%	10.1%	14.0%	17.3%	18.9%
North Puget	3.2%	3.9%	4.9%	6.2%	7.9%	10.2%	13.2%	16.7%	20.6%	23.9%	25.0%
OESF	10.2%	10.7%	11.0%	11.7%	12.6%	13.9%	16.0%	20.1%	25.0%	28.4%	29.6%
South Coast	0.2%	0.3%	0.6%	1.2%	2.2%	3.6%	6.0%	8.8%	12.3%	16.0%	18.7%
South Puget	1.7%	2.1%	2.7%	3.6%	4.6%	6.1%	8.4%	11.3%	14.4%	17.2%	18.7%
Straits	1.8%	2.5%	3.2%	4.3%	5.6%	7.4%	9.9%	12.6%	15.0%	17.9%	19.3%
TOTAL (Western Washington)	3.2%	3.7%	4.2%	5.1%	6.2%	8.0%	10.5%	13.8%	17.6%	20.9%	22.5%

Percent area western Washington HCP planning units with older forest conditions in conservation areas by decade through 2120. Values over 10% in bold



Forest Resilience Task Force (FRTF) Homework

From Tracy Petroske, FAC Member, 6/26/24

We had our first FRTF meeting about 2 weeks ago and part of our homework is to come up with our high-level goals. The idea is that we will compile all the FRTF members "goal statements," and this will help set the direction for the FRTF.

These are some I have come up with as a starting point for the FAC to consider. I took these largely from a DNR forest management planning document and slightly changed wording for Whatcom county. Again, they want these to be very high level – without "how" we will accomplish them.

The facilitators (Triangle Associates) asked for the goals to be submitted as of today (July 26) but I asked for additional time because Cory and I are representing the voice of the FAC and it is necessary to develop and share the goals by group consensus. Triangle said we can submit our FRTF suggested goals to them after the FAC August 6 meeting.

Here is a start for us to modify/add/subtract as the group determines:

FRTF Goal #1: To restore and manage forested landscapes in Whatcom County at an achievable pace and scale, such that designated treatments increase the health and resilience of forest and aquatic ecosystems and reduce risk of uncharacteristic wildfires.

FRTF Sub-Goal #1a: *Identify/map/prioritize landscapes for treatment in Whatcom County (aka priority planning areas). New areas could be considered for addition to the plan every XX years.*

FRTF Sub-Goal #1b: *Develop and implement a forest health resilience monitoring program that establishes criteria, tools and processes to monitor forest and watershed conditions, assess progress and reassess strategies over time.*

FRTF Goal #2: Enhance economic development through implementation of forest restoration and management strategies that maintain and attract private sector investments and employment in rural communities.

FRTF Goal #3: To compile a list of words that need definition, and then define terminology to be used in Whatcom County; these definitions might or might not be perfect on the state- or nation-wide scale but will be accepted as Whatcom County definitions for the purpose of forest-related health and resilience. (Note: I put forest-health related because these treatments will impact watersheds/water).

Current Whatcom County Definitions:

<https://www.codepublishing.com/WA/WhatcomCounty/html/WhatcomCounty20/WhatcomCounty2097.html>

Conversion Option Harvest Plan (COHP). "Conversion option harvest plan (COHP)" means a voluntary plan developed by the landowner and approved by the county prior to submittal to the Department of Natural Resources, indicating the limits of harvest areas, road locations, critical area buffers, and open space. The plan provides the landowner with the opportunity to log under a DNR Class II, III, or IV-Special permit without a county project permit while maintaining the option to convert the land at a later date.

Conversion to a Use Other than Commercial Timber Operation. "Conversion to a use other than commercial timber operation" means a bona fide conversion to an active use which is incompatible with timber growing (WAC [222-16-010](#)).

Demonstrative BMPs. “Demonstrative BMPs” means those BMPs that do not otherwise qualify as presumptive.

Existing Tree Canopy Area. “Existing tree canopy area” means the tree canopy area in existence as of January 1, 2017, using best available information.

Forest Land. “Forest land” means all land which is capable of supporting a merchantable stand of timber and is not being actively used for a use which is incompatible with timber growing.

Forest Practice. “Forest practice” means any activity conducted on or directly pertaining to forest land and related to growing, harvesting, or processing timber including, but not limited to: (1) road and trail construction; (2) fertilization; (3) prevention and suppression of diseases and insects; or other activities that qualify as a use or development subject to the Forest Practices Act.

Forest Products. “Forest products” means products obtained from stands of forest trees which have been either naturally or artificially established.

Forested Area. “Forested area” means the area encompassed by the tree canopy and any native vegetation that occurs within the boundaries of the tree canopy.

Native Vegetation. “Native vegetation” means vegetation comprised of plant species, other than noxious weeds, that are indigenous to the coastal region of the Pacific Northwest and which reasonably could have been expected to naturally occur on the site. Examples include trees such as Douglas fir, western hemlock, western red cedar, alder, big-leaf maple, and vine maple; shrubs such as willow, elderberry, salmonberry and salal; and herbaceous plants such as sword fern, foam flower, and fire weed. (From Department of Ecology Stormwater Manual)

Natural Runoff. “Natural runoff” means runoff that originates from native vegetated areas.

Natural Stormwater. “Natural stormwater” means stormwater that originates from native vegetated areas.

Natural Stormwater Runoff. “Natural stormwater runoff” means stormwater runoff that originates from native vegetated areas.

Open Space. “Open space” means any parcel or area of land or water not covered by structures, hard surfacing, parking areas and other impervious surfaces except for pedestrian or bicycle pathways, or where otherwise provided by this title or other county ordinance and set aside, dedicated, for active or passive recreation, visual enjoyment or critical area development buffers, as established in the Whatcom County Critical Areas Ordinance. For properties within the jurisdiction of the Shoreline Management Program (WCC Title 23), submerged lands and/or tidelands within the boundaries of any waterfront parcel that are located waterward of the ordinary high water mark shall not be used in open space calculations.

Ordinary High Water Mark (OHWM). “Ordinary high water mark (OHWM)” means that mark that will be found on all lakes, streams and tidal water by examining the bed and banks and ascertaining where the presence and action of waters are so common and usual, and so long continued in all ordinary years, as to mark upon the soil a character distinct from that of the abutting upland, in respect to vegetation as that condition exists on June 1, 1971, or as it may naturally change thereafter; provided, that in any area where the ordinary high water mark adjoining salt water shall be the line of mean higher high tide and the ordinary high water mark adjoining fresh water shall be the line of mean high water.

Presumptive BMPs. “Presumptive BMPs” means those BMPs that will require no additional development stormwater runoff flow control or treatment per current Stormwater Manual declaration once physically established in compliance with all current Stormwater Manual criteria.

Public Water. “Public water” means any system, excluding a system serving only one single-family residence and a system with four or fewer connections all of which serve residences on the same farm, providing piped water for human consumption as defined by Chapter 24.11 WCC and Chapters 246-290 or 246-291 WAC, as they now exist or are subsequently amended.

Renewable Biomass. “Renewable biomass” includes but is not limited to the following:

- (1) Planted crops and crop residue harvested from agricultural land.
- (2) Planted trees and tree residue from a tree plantation.
- (3) Animal waste material and animal byproducts.
- (4) Slash and pre-commercial thinnings.
- (5) Organic matter that is available on a renewable or recurring basis.
- (6) Algae.
- (7) Separated yard waste or food waste, including recycled cooking and trap grease.
- (8) Subsections (1) through (7) of this section including any incidental, de minimis contaminants that are impractical to remove and are related to customary feedstock production and transport.

Renewable Fuel. “Renewable fuel” means liquid or gaseous fuels produced from renewable biomass, woody biomass or landfill wastes and limited in terms of blending with fossil fuels. Renewable fuels shall also include fuels produced from renewable electricity including hydrogen and synthetic fuels. Common renewable fuels include ethanol, renewable diesel and biodiesel:

- (1) “E85 motor fuel” means an alternative fuel that is a blend of ethanol and hydrocarbon of which the ethanol portion is nominally 75 to 85 percent denatured fuel ethanol by volume that complies with the most recent version of American Society of Testing and Materials Specification D 5798.
- (2) “Renewable diesel” means a diesel fuel substitute produced from nonpetroleum renewable sources, including vegetable oils and animal fats, that meets the registration requirements for fuels and fuel additives established by the federal Environmental Protection Agency in 40 Code of Federal Regulations (C.F.R.) Part 79 and meets the requirements of American Society of Testing and Materials Specification D 975.
- (3) Renewable fuels shall include those designed to result in a lifecycle greenhouse gas emission reduction of at least 50 percent or more under the federal Clean Air Act. Renewable fuels shall not include products produced from palm oil or other feedstocks that cannot be proven to reduce greenhouse gas emissions utilizing accepted methods of the Washington State Department of Ecology or U.S. EPA.

Reserve Area. When the lot clustering method of land division or subdivision is used, the “reserve area” is an easement on a proposed division, subdivision or short subdivision which is reserved for agricultural, forestry, or open space purposes in perpetuity, or for other future-approved development purposes as specified in the Whatcom County Code.

Reserve Tract. When the lot clustering method of land division or subdivision is used, the “reserve tract” is that portion of a proposed cluster division, subdivision or short subdivision which is intended for agricultural, forestry, open space, or other future-approved development purposes. A reserve area easement may cover all or part of a reserve tract. A portion of a reserve tract may be developed but development within a reserve area easement shall be limited to that permitted per the reserve area standards for the zoning district in which the tract is located.

Runoff. “Runoff” means the portion of precipitation that does not evaporate or naturally percolate into the ground, but flows via one or more of the following means:

- Surface or overland flow;
- Interflow;
- Shallow ground water; and flow into one or more of the following:
- Stormwater drainage facilities;
- Defined surface waterbodies (e.g., rivers, streams, creeks, sloughs, ponds, lakes);
- Springs;
- Seeps;
- Wetlands.

Rural Community. “Rural community” means an area that has been designated in the Comprehensive Plan as a mixed use LAMIRD based on historic development patterns, as defined in Washington State law (RCW 36.70A.070(5)(d)(i) and (iv)).

Rural Zoning Districts. “Rural zoning districts” means zoning districts that allow rural, agricultural, recreation and forestry activities. These zoning districts include: R2A, R5A, R10A, ROS, Agriculture, and Forestry. This definition is intended for the purpose of regulating clearing activity only.

Significant. “Significant” means a reasonable likelihood of more than a moderate impact. The determination of the significance of the impact should consider the physical setting, the magnitude or duration of the impact, along with its chance of occurring.

Significant Tree. “Significant tree” means any evergreen tree 12 inches or greater in diameter at breast height (DBH) or deciduous tree eight inches or greater DBH. Diameter at breast height shall be measured four and one-half feet above existing grade. The director may authorize the exclusion of any tree, which for reasons of health or age is not desirable to retain, from this definition.

Significant Water Body. “Significant water body” means a lake or pond larger than 25,000 square feet, but smaller than the minimum specified for regulation in the state shoreline management act; or a perennial stream with flow smaller than the volume specified in the State Shoreline Management Act.

Stormwater. “Stormwater” means that portion of precipitation that does not naturally percolate into the ground or evaporate, but flows via overland flow, interflow, pipes and other features of a stormwater drainage system into a defined surface water body, or a constructed infiltration facility.

Trailheads. “Trailheads” are areas used for access to trails. Trailheads may include parking areas, restrooms and garbage collection facilities.

Trails. “Trails” mean areas used for walking and hiking. Where these are adequately constructed, then they may be used for bicycling and may meet ADA standards for wheelchair accessibility. Trails may also be used for mountain biking, cross-country skiing and horseback riding where appropriate.

Tree Canopy. “Tree canopy” means the total area of the tree(s) where the leaves and outermost branches extend; also known as the dripline.

Tree Height.

- (1) “Small tree” generally indicates a height of less than 25 feet at maturity;
- (2) “Medium tree” generally indicates a height of more than 25 feet and less than 40 feet at maturity;
- (3) “Large tree” generally indicates a height of more than 40 feet at maturity.

Vegetation Maintenance. “Vegetation maintenance” means lawn maintenance, brush and tree pruning and other normal land maintenance activities involving cutting, removal or planting of vegetation by manual, mechanical, or chemical methods.

Viable Nest Site. “Viable nest site” means any nest site (tree(s)) which has/does contained(s) a nest in the past and is likely to have actively nesting eagles in the future as determined by the Washington Department of Wildlife. This will include recently active nest sites including those which recently lost nests but still have nest branch structure capable of supporting a nest.

**WHATCOM COUNTY TREASURER
TIMBER TAX DISTRIBUTION**

	2023	2022	2021	2020	2019	2018	2017
PRIORITY #1 - VOTED BONDS AND CAPITAL PROJECT LEVIES							
CITY OF BLAINE 2002 BOND	-	-	11.81	14.47	14.56	11.27	14.13
CITY OF FERNDALE LIBRARY BOND	0.06	0.09	0.06	0.12	0.08	0.07	0.09
FIRE #4 GO BOND	-	-	-	113.07	128.02	100.99	135.54
SOUTH WHATCOM REGIONAL FIRE AUTHORITY	68.89	66.03	69.56	82.17	82.21	66.16	89.86
SEDRO WOOLLEY SCHOOL #101 BOND	1,147.14	1,023.85	1,194.46	1,506.17	1,530.90	1,287.99	1,887.70
SEDRO WOOLLEY SCHOOL #101 Technology levy	2,172.61	1,974.88	2,211.95	-	-	780.82	1,042.76
BELLINGHAM SCHOOL #501 BOND	11,155.12	7,858.26	6,516.95	9,904.29	9,683.98	5,070.96	6,714.39
BELLINGHAM #501 CAPITAL PROJECTS	5,762.25	5,207.73	5,780.36	4,426.06	4,561.92	4,359.88	5,445.27
FERNDALE SCHOOL #502 BOND	1,489.21	1,330.51	1,442.19	1,846.76	957.00	709.44	960.19
BLAINE SCHOOL #503 BOND	358.66	331.80	348.59	422.86	415.92	321.03	354.09
BLAINE SCHOOL #503 CAPITAL PROJECTS	194.02	178.88	188.21	227.86	223.21		
LYNDEN SCHOOL #504 BOND	335.94	281.12	309.74	387.39	398.59	316.70	407.27
LYNDEN SCHOOL #504 CAPITAL PROJECTS	87.76	71.69	76.90				
MERIDIAN SCHOOL #505 BOND	150.18	139.05	151.17	200.15	192.30	151.06	186.74
MERIDIAN SCHOOL #505 CAPITAL PROJECTS	83.89	76.49	78.43				
NOOKSACK SCHOOL #506 BOND	17,577.54	15,518.41	17,455.15	20,872.88	11,436.70	8,804.15	11,702.44
MT BAKER #507 CAPITAL PROJECTS	57,485.03	53,785.39	62,196.98	74,090.06	77,080.79	43,763.79	56,799.81
LYNDEN REGIONAL PARK & REC	23.20	20.16	22.24	-	-	13.03	17.40
POINT ROBERTS PARK & REC #1 BOND	-	0.49	0.80	1.06	1.05	0.76	0.98
FIRE #07 GO BOND	10.99	9.75	9.79	11.61			-
Subtotal	98,102.49	87,874.56	98,065.34	114,106.98	106,707.22	65,758.12	85,758.66
PRIORITY #2 - SCHOOL ENRICHMENT LEVIES							
CONCRETE #11	14,573.56	12,274.29	12,787.88	14,678.33	11,925.68	15,373.21	21,692.25
SEDRO WOOLLEY #101	5,220.40	4,546.87	4,424.41	5,049.69	2,800.82	4,475.01	5,983.72
BELLINGHAM #501	5,864.52	5,003.26	5,216.95	6,318.22	5,158.08	5,824.99	7,668.76
BELLINGHAM #501 TRANS - expired	-	-	-	-		377.23	510.80
FERNDALE #502	1,075.99	752.91	792.00	1,411.80	888.53	1,454.92	1,912.53
BLAINE #503	326.09	269.20	271.79	324.65	304.83	310.45	339.53
LYNDEN #504	406.39	334.62	344.16	334.75	265.44	341.11	428.96
MERIDIAN #505	257.10	232.53	242.84	280.09	154.06	259.02	335.47
NOOKSACK #506	6,299.45	5,246.74	7,967.54	6,216.11	5,042.90	9,323.69	12,015.31
MT BAKER #507	90,015.83	78,789.20	87,701.01	106,689.84	63,998.10	104,732.40	128,735.30
Subtotal	124,039.32	107,449.62	119,748.60	141,303.47	90,538.44	142,472.02	179,622.62

**WHATCOM COUNTY TREASURER
TIMBER TAX DISTRIBUTION**

	2023	2022	2021	2020	2019	2018	2017
PRIORITY #3 - REGULAR LEVIES (INCLUDING ADMINISTRATIVE BONDS)							
COUNTY CURRENT EXPENSE	98,041.62	151,038.72	128,924.26	173,750.33	119,417.86	194,966.07	120,287.16
COUNTY MENTAL HEALTH	2,092.08	2,693.51	2,075.34	2,627.91	1,660.60	2,457.58	1,431.51
COUNTY DEVELOPMENTAL DISABILITY	2,092.08	2,693.51	2,075.34	16,723.14	1,660.60	2,457.58	1,431.51
COUNTY ELECTION RESERVE	1,147.77	1,797.45	1,559.55	2,128.32	1,485.09	2,458.26	1,543.24
COUNTY VETERANS RELIEF	1,882.86	2,424.16	1,867.81	15,050.84	1,494.53	2,211.83	1,288.37
COUNTY CHILDRENS INITIATIVE	32,148.30						
FLOOD CONTROL ZONE	20,424.61	25,583.16	21,749.33	29,240.94	20,037.28	32,590.36	15,023.20
CONSERVATION FUTURES	4,177.25	6,439.95	5,050.38	6,789.21	4,651.40	7,568.10	4,661.56
PORT OF BELLINGHAM GENERAL FUND	22,473.39	34,664.13	29,113.46	39,080.30	24,997.91	40,511.76	25,286.50
PORT OF BELLINGHAM GO BOND	2,673.67	4,206.02	3,655.42	4,988.53	5,199.04	8,620.99	5,491.51
PORT OF BELLINGHAM RDA	34.28	80.19	41.73	58.38	34.90	57.22	33.50
COUNTY ROAD FUND	140,141.42	222,677.11	189,615.67	251,881.46	169,606.49	275,547.38	164,929.99
COUNTY ROAD DIVERSION	8,102.41	8,933.24	7,709.57	10,370.24	7,093.84	11,641.94	7,055.85
RURAL LIBRARY	49,897.57	76,698.62	64,931.67	86,408.27	57,592.35	92,845.80	56,674.53
FIRE #1 EXPENSE FUND	2,340.45	3,545.93	2,133.28	2,879.21	1,838.22	2,978.59	1,856.28
FIRE #4 EXPENSE FUND	876.84	1,348.29	112.89	1,504.24	1,002.01	1,634.46	1,030.39
FIRE #5 EXPENSE FUND	18.06	28.40	22.68	30.17	19.96	30.05	17.76
FIRE #7 EXPENSE FUND	283.23	424.54	336.12	451.52	296.82	473.54	251.80
FIRE #8 EXPENSE FUND	69.01	104.47	87.35	146.27	92.70	162.47	101.14
FIRE #8 M&O	48.49	69.19	55.48	44.96	29.90	51.92	32.47
FIRE #11 EXPENSE FUND	183.17	280.24	169.18	227.40	150.46	242.56	151.60
FIRE #14 EXPENSE FUND	4,466.66	7,026.84	6,216.49	8,296.52	5,397.66	8,450.68	5,218.35
FIRE #16 EXPENSE FUND	2,154.74	3,237.61	1,829.71	2,510.39	1,538.98	5,239.54	2,054.93
FIRE #17 EXPENSE FUND	5.46	8.26	7.45	9.97	7.06	11.14	6.74
FIRE #18 EXPENSE FUND	83.29	130.54	127.42	121.17	78.19	396.77	263.44
FIRE #19 EXPENSE FUND	1,268.86	1,444.10	883.07	1,148.51	795.89	645.81	402.55
FIRE #19 RESERVE FUND	-	618.91	182.88	242.76	173.68	266.06	173.75
FIRE #21 EXPENSE FUND	732.68	1,111.00	960.85	1,295.38	813.38	1,262.24	798.54
FIRE #21 2013 ANNEX DEBT	-	-	-	-	33.15	52.92	34.52
FIRE SWFA EXPENSE FUND	1,369.85	2,150.60	1,197.37	1,564.19	1,035.89	1,724.49	1,111.47
FIRE SWFA CAPITAL IMPROVEMENT	-	-	-	-	-	154.40	-
CITY OF BELLINGHAM FIRE PENSION	25.70	38.99	32.51	44.41	30.16	48.99	27.62
CITY OF BELLINGHAM GENERAL FUND	158.19	239.47	200.12	273.37	184.46	299.89	191.89
CITY OF BELLINGHAM GREENWAYS iv	51.59	78.25	65.25	89.13	61.38	100.42	64.48
CITY OF BELLINGHAM RDA	0.66	1.49	0.77	1.11	0.68	1.10	0.67

**WHATCOM COUNTY TREASURER
TIMBER TAX DISTRIBUTION**

	2023	2022	2021	2020	2019	2018	2017
CITY OF BELLINGHAM AFF HOUSING	12.42	19.16	16.45	22.96	16.10	20.07	13.06
CITY OF BLAINE CURRENT EXPENSE	112.70	168.63	145.39	199.34	133.03	219.85	128.09
CITY OF FERNDALE CURRENT EXPENSE	2.00	3.04	2.51	3.56	1.72	3.12	1.68
CEMETERY #1	218.06	334.56	294.44	2,149.52	248.40	394.78	229.67
CEMETERY #2	8.49	13.23	12.16	16.33	10.56	17.20	10.86
CEMETERY #3	453.33	693.86	646.17	867.99	596.42	878.09	545.96
CEMETERY #4	7.74	12.55	11.58	16.12	10.75	17.57	10.94
CEMETERY #5	97.99	149.49	128.49	180.48	113.68	183.98	109.87
CEMETERY #6	4.54	7.01	5.87	8.29	5.47	8.69	5.38
CEMETERY #7	27.23	41.29	31.53	263.86	27.33	44.25	25.89
CEMETERY #8	0.19	0.30	0.29	0.35	0.21	0.32	0.19
CEMETERY #9	179.91	274.59	259.83	347.03	220.76	363.00	227.27
CEMETERY #10	19.25	28.64	24.51	34.10	22.78	36.35	22.43
CEMETERY #11	3.59	5.84	5.06	7.00	4.47	9.60	6.06
EMERGENCY MEDICAL SVC FIRE #04	581.63	893.07	771.00	1,046.76	503.17	832.81	391.05
EMERGENCY MEDICAL SVC FIRE #11	134.26	206.11	158.02	193.64	83.71	135.33	84.50
EMERGENCY MEDICAL SVC FIRE #16	1,096.88	1,670.08	1,104.09	1,425.55	727.90	1,161.99	636.61
WHATCOM COUNTY EMS	42,274.97	42,924.15	36,561.88	49,162.46	33,691.66	54,700.96	34,350.41
SKAGIT HOSPITAL #304	3,450.65	5,182.99	4,146.93	5,656.29	3,798.59	6,074.36	3,881.65
PT ROBERTS HOSPITAL EXPENSE FUND	8.03	12.62	10.07	13.41	8.87	13.35	7.89
PT ROBERTS PARK & REC #1	3.53	5.63	4.52	6.44	4.30	6.53	1.51
BLAINE BIRCH BAY PARK & REC #2 CAP	3.41	5.39	15.09	8.24	4.09	6.76	4.10
BLAINE BIRCH BAY PARK & REC #2 EXPENSE	28.71	43.76	38.15	45.88	29.78	46.09	21.71
BLAINE BIRCH BAY PARK & REC #2 RES	11.35	17.94	2.27	20.59	13.67	22.54	13.68
LYNDEN REGIONAL PARK & REC #3	24.61	-	32.29	-	-	-	-
AFFORDABLE HOUSING BELLINGHAM	24.76	38.33	33.03	45.93	32.23	40.14	26.13
CHUCKANUT COMMUNITY FOREST PARK	0.13	0.35	1.60	2.18	1.33	1.97	1.17
Subtotal	448,256.60	614,569.50	517,453.62	721,722.85	468,823.50	763,402.61	459,686.58
GRAND TOTAL DISTRIBUTION	670,398.41	809,893.68	735,267.56	977,133.31	666,069.16	971,632.75	725,067.86

FBL Receipts and Distributions								
2017-2023								
	2023	2022	2021	2020	2019	2018	2017	
Confirmed received from DNR (cash basis)	387,467.49	1,260,359.03	1,926,892.40	3,315,628.74	4,107,141.49	3,719,462.83	1,411,947.94	
Dec receipts from previous year distributed in Jan of following year*	57,556.01	18,863.47	211,684.30	564,585.88				
Dec receipts from previous year distributed in Jan of following year*	(383.61)	(57,556.01)	(18,863.47)	(211,684.30)	(564,585.88)			
Refund to FBL								\$ (148.64)
Interest Distributed, Received separately from DNR	2,103.48	4,854.54	29,025.07	39,666.94	36,158.05	52,538.58		\$ 25,275.77
Adjusted Amount Distributed to Taxing Districts	446,743.37	1,226,521.03	2,148,738.30	3,708,197.26	3,578,713.66	3,772,001.41	1,437,075.07	
Washington State								
State School Part 1	103,592.14	271,299.64	472,687.36	797,628.46	841,728.97	696,180.61		0.00
State School Part 2	55,527.37	146,221.23	254,430.72	407,703.43	312,226.32	382,486.73		0.00
Washington State General Fund								310,666.50
Whatcom County								
County Current Expense	34,211.16	103,604.03	185,024.94	334,802.63	375,346.54	334,570.68		143,687.09
Childrens Initiative	13,292.82							
County Developmental Disability	784.89	1,844.52	2,959.97	4,991.53	5,219.46	4,213.02		1,709.99
County Election Reserve	456.38	1,233.26	2,241.10	4,112.14	4,667.81	4,218.35		1,843.46
County Mental Health	784.89	1,844.52	2,959.97	4,991.53	5,219.46	4,213.02		1,709.99
County Veterans Relief	706.36	1,660.10	2,664.00	4,492.43	4,697.52	3,791.71		1,538.73
County Road								
County Road Diversion	2,924.37	6,140.70	11,083.81	20,005.53	22,340.39	19,996.64		8,444.88
County Road Fund	56,092.45	153,034.02	272,258.25	484,571.83	534,136.77	473,290.44		197,398.99
Flood Control Zone	7,604.97	17,547.38	31,205.74	56,315.19	62,979.85	55,924.56	17,945.75	
Cemetery								
Cemetery #1	386.23	1,485.61	3,702.79	5,418.15	5,013.26	2,103.12		330.65
Cemetery #3	637.03	747.22	0.00	39.84	2,930.58	5,023.90		2,085.41
Cemetery #5	363.68	312.01	354.83	2,009.56	89.22	245.63		247.29
Conservation Futures	1,652.84	4,394.45	7,246.19	13,074.91	14,619.98	12,986.72	5,568.39	
Rural Library	19,746.45	52,662.05	93,169.87	165,797.16	181,221.40	159,341.44	67,774.69	
Port of Bellingham								
POB General Fund	7,291.32	23,771.15	41,765.05	74,380.87	78,571.86	69,517.45		30,205.57
POB Go Bond	2,666.76	2,885.96	5,252.85	10,490.85	16,341.31	14,793.49		6,559.77
POB RDA	15.67	54.66	60.12	109.88	109.74	98.28		39.97
Bellingham School District								
BSD Transportation						161.15		223.61
BSD Bond	10,712.93	31,194.04	5,408.15	2,983.17	2,208.93	1,083.21		1,469.72
BSD Capital Projects	13,081.21	20,780.31	4,796.87	1,348.47	1,040.58	931.31		3,219.43
BSD Enrichment (M&O)	33,995.64	39,879.23	8,658.63	3,672.71	2,353.12	2,488.58		12,547.82
Mt Baker School District								
MBSD Capital Projects	22,728.79	78,598.35	179,190.99	329,744.39	375,769.89	247,146.15		104,771.80
MBSD Enrichment (M&O)	69,333.48	230,123.41	506,456.40	877,538.47	623,983.24	1,182,905.26		474,925.40
Nooksack School District								
NSD Bond								240.83
NSD Enrichment (M&O)								494.55
Fire Districts/ EMS								
FD #4	1,081.15	4,717.05	496.11	0.00	0.00	0.00		0.00
FD #14	924.87							
FD#16	1,104.00	1,043.70	2,204.21	7,290.45	0.00	424.07		392.05
Whatcom County EMS	14,931.53	29,442.43	52,459.38	94,683.68	105,897.46	93,865.89	41,032.74	
DNR Receipts Distributed to Taxing Districts	476,631.38	1,226,521.03	2,148,738.30	3,708,197.26	3,578,713.66	3,772,001.41	1,437,075.07	
	**	29,888.01	0.00	0.00	0.00	0.00	0.00	0.00
<i>*Timing Adjustment (receipts received in December may not be distributed until January of subsequent year)</i>								
**2023 includes duplicate distribution of \$29,888.01 and was corrected in 2024. Note this did not affect Mt Baker SD.								
**2017 includes refund in August of \$148.64								