

General Election - November 8, 2022

Whatcom County - Sample Ballot

Instructions

How to vote

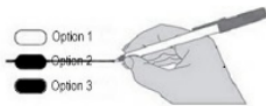


Use a pen to fill in the oval next to your choice.

Vote for one in each measure or contest.

If you mark more than one without making a correction, no votes will be counted in that measure or contest.

How to correct a vote



If you make a mistake, draw a line through the entire incorrect choice. You may then make another choice.

Write-In

To vote for a candidate not listed, write the name on the line provided and fill in the oval.

State Measures Advisory Votes

Advisory Vote No. 39 Engrossed Substitute Senate Bill 5974

The legislature increased, without a vote of the people, the tax on aircraft fuel from 11 cents to 18 cents per gallon, costing \$14 million in its first ten years, for government spending.

This tax increase should be:

- Repealed
 Maintained

Advisory Vote No. 40 Engrossed Substitute House Bill 2076

The legislature imposed, without a vote of the people, premiums on "transportation network companies" to provide workers compensation to their drivers, costing an indeterminate amount in its first ten years, for government spending.

This tax increase should be:

- Repealed
 Maintained

Whatcom County

Proposition 2022-5 Children's Initiative Levy Lid Lift

The Whatcom County Council adopted Ordinance No. 2022-045 concerning funding to address the well-being of children. If approved, this proposition would authorize the County to increase property taxes to fund early learning programs, childcare, and support for homeless or otherwise vulnerable children. This measure would increase the regular property tax levy for ten consecutive years by \$0.19/\$1,000 of assessed valuation for collection in 2023-2032 (for a total rate of \$0.94/\$1,000 of assessed valuation in 2023), generating approximately \$8,200,000 annually, subject to limit factors in RCW 84.55 and exemptions in RCW 84.36.381.

Should this proposition be approved?

- Yes
 No

Proposition 2022-6 Regular Property Tax Levy for Emergency Medical Services

The Whatcom County Council passed Ordinance 2022-055 concerning the renewed funding for the countywide Emergency Medical Services system. Will Whatcom County be authorized to continue to impose a regular property tax levy of \$0.295 or less per thousand dollars of assessed valuation for each of the six consecutive years, with collection beginning in 2023, for the continued provision of emergency medical services?

- Yes
 No

READ: Each candidate for partisan office may state a political party that he or she prefers. A candidate's preference does not imply that the candidate is nominated or endorsed by the party, or that the party approves of or associates with that candidate.

Federal Partisan Offices

U.S. Senator

- Patty Murray
(Prefers Democratic Party)
 Tiffany Smiley
(Prefers Republican Party)
 Write-In

Congressional District 2 U.S. Representative

- Rick Larsen
(Prefers Democratic Party)
 Dan Matthews
(Prefers Republican Party)
 Write-In

State of Washington Partisan Offices

Secretary of State unexpired 2 year term

- Steve Hobbs
(Prefers Democratic Party)
 Julie Anderson
(Prefers Nonpartisan Party)
 Write-In

State of Washington Partisan Offices

Legislative District 40 State Representative Position 1

- Debra Lekanoff
(Prefers Democratic Party)
 Shannon Perkes
(Prefers Republican Party)
 Write-In

Legislative District 40 State Representative Position 2

- Alex Ramel
(Prefers Democratic Party)
 Trevor Smith
(Prefers Democratic Party)
 Write-In

Legislative District 42 State Senator short & full 4 year term

- Sharon Shewmake
(Prefers Democratic Party)
 Simon Sefzik
(Prefers Republican Party)
 Write-In

Legislative District 42 State Representative Position 1

- Alicia Rule
(Prefers Democratic Party)
 Tawsha (Dykstra) Thompson
(Prefers Republican Party)
 Write-In

Legislative District 42 State Representative Position 2

- Joe Timmons
(Prefers Democratic Party)
 Dan Johnson
(Prefers Republican Party)
 Write-In

Whatcom County Partisan Office

Prosecuting Attorney

- Eric Richey
(Prefers Democratic Party)
 Write-In

Judicial Nonpartisan Offices

Supreme Court Justice Position 1

- Mary I. Yu
 Write-In

Supreme Court Justice Position 5

- Barbara Madsen
 Write-In

Supreme Court Justice Position 6

- G. Helen Whitener
 Write-In

Whatcom County District Court Judge Position 1 short & full 4 year term

- Angela Anderson
 Write-In

Whatcom County District Court Judge Position 2

- Jonathan Rands
 Gordon M. Jenkins
 Write-In

Public Utility District No. 1 Nonpartisan Office

Commissioner District 3

- Jaime Arnett
 Eric Davidson
 Write-In

City of Lynden

Proposition 2022-4 Renewal of Sales and Use Tax for Transportation Improvements

The City Council as the Board of the Lynden Transportation Benefit District, Lynden, Washington, adopted Resolution No. 1049 concerning a sales and use tax to fund certain transportation improvements. This proposition would renew the authorization of a sales and use tax of two tenths of one percent (0.002) to be collected from all taxable retail sales within the Transportation Benefit District in accordance with RCW 82.14.0455 for a term of ten years, or until such District is dissolved, whichever is earlier, for the purpose of paying or financing costs of necessary transportation improvement projects listed and identified in the City of Lynden Six-Year Transportation Improvement Plan:

Should this proposition be approved?

- Yes
 No

Nooksack Valley School District 506

Proposition 2022-7 Dissolution and Reapportionment of Directors' Districts

The Board of Directors of Nooksack Valley School District 506, Whatcom County, Washington, adopted Resolution No. 11 concerning the dissolution and reapportionment of its directors' districts. This proposition would authorize the district to dissolve its five existing directors' districts and reapportion the district into three directors' districts and with two directors at large to better facilitate citizen participation as board members.

Should this proposition be:

- Approved
 Rejected

For a list of the people and organizations that donated to state and local candidates and ballot measure campaigns, visit www.pdc.wa.gov