

# WHATCOM COUNTY

## LOCAL VOTERS' PAMPHLET

### Primary Election - August 19, 2008



Dear Whatcom County Voter:

A historic change will take place with this year's Primary Election! For the first time, Washington State will have a "Top 2 Primary" for partisan offices. This means you can vote for any candidate listed. The two candidates who receive the most votes, regardless of party preference, will advance to the General Election.

Candidates for partisan offices may state a political party they prefer. Please note that a candidate's preference does not imply that the candidate is nominated or endorsed by the party or that the party approves of or associates with that candidate.

Your vote in the Primary Election *will* make a difference!

Sincerely,

A handwritten signature in cursive script that reads "Shirley Forslof".

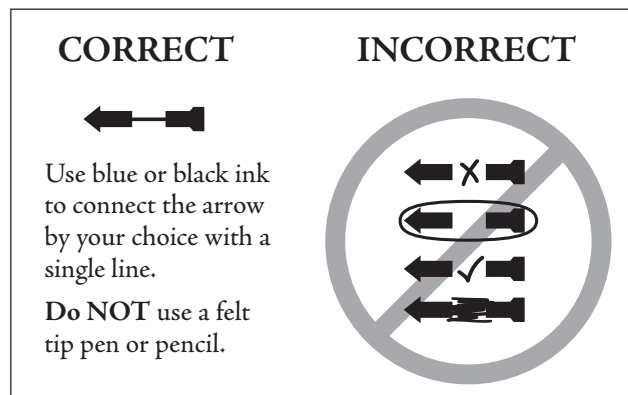
Shirley Forslof  
Whatcom County Auditor

Published by the Whatcom County Auditor's Office: [www.whatcomcounty.us/auditor](http://www.whatcomcounty.us/auditor)

## Marking Your Ballot - Make Your Vote Count

**STEP 1: Mark Your Ballot.** Use blue or black ink to connect the arrow by your choice with a single dark line. Do NOT use a felt tip pen or pencil.

- Your ballot will not count if you sign your name or otherwise identify yourself on your ballot.
- More than one vote for an office or ballot measure will be an overvote and no votes for that office or ballot measure will be counted, unless specifically allowed by law.



**STEP 2: Remove Stub.** Remove the stub at the top of the ballot at the perforation and discard the stub.

**STEP 3: Keep It Secret.** Place the voted ballot in the white secrecy envelope and seal it.

**STEP 4: Mailing Envelope.** Place the white secrecy envelope inside the lavender return envelope.

**STEP 5: Sign the Voter Affidavit.** Read and sign the voter affidavit on the back of the lavender envelope.

- The lavender envelope must be signed by you in order for your ballot to be counted. If you are unable to sign your name, have two people witness your mark on your ballot envelope.
- Ballot signatures are matched with your voter registration.

**STEP 6: Protect Your Privacy.** Seal the envelope so the privacy flap covers your signature as indicated on the envelope.

**STEP 7: Mail Your Ballot.** Affix a first-class postage stamp before you deposit your ballot in the mail.

- To assure your vote will be counted, your ballot needs to be postmarked **no later** than Election Day or deposited in the Curbside Ballot Drop Box located at 311 Grand Ave., by 8:00 p.m. on Election Day.

**IF YOU MAKE A MISTAKE:** Draw a line through the entire candidate's name like this: ~~John Doe~~ ←—■ You then have the option of making another choice, if you wish. Do not erase!

DO NOT cut or deface your ballot. To write-in a name not on the ballot, connect the arrow and write in the name of the candidate in the space provided.

## Accessible Voting Unit

### **What is an Accessible Voting Unit?**

An accessible voting unit (AVU) is federally required. It is equipped with visual and audio technology that allows voters with impaired vision and/or physical disabilities to vote a secret ballot. The AVU is an accurate and secure way to vote.

### **Where will the AVU be located?**

The AVU will be located at the Whatcom County Auditor's Office, Whatcom County Courthouse, 311 Grand Ave., Suite 103, Bellingham, WA.

### **When can I vote using the AVU?**

You may vote beginning Wednesday, July 30, 2008. The AVU will be available to vote in the Auditor's Office Mon. – Fri., 10:00 a.m. – 3:00 p.m.

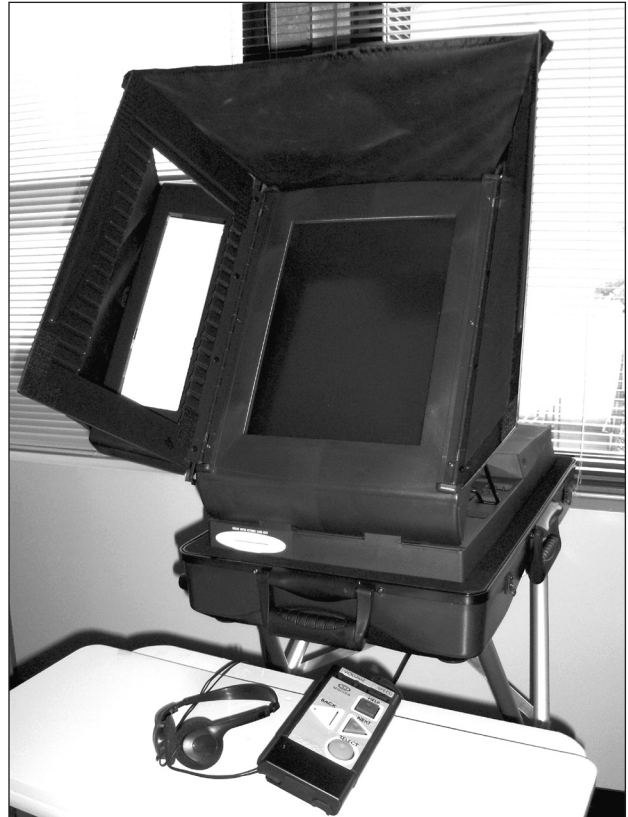
The AVU will be available on Election Day, Tuesday, August 19, 2008, from 7:00 a.m. – 8:00 p.m.

### **Is the AVU secure?**

Yes. The AVU stands alone and is not connected to the Internet or an intranet. When a vote is cast the ballot selections are encrypted and stored within the voting unit. The ballot order is scrambled to ensure the voter's anonymity and leaves no connection between the voter and his or her recorded vote.

### **How can I be sure my vote will be counted?**

The AVU displays a paper record of your selections before you cast your ballot. Your secret ballot is electronically stored and it cannot be traced back to you.



# Sample Ballot

## SAMPLE BALLOT WHATCOM COUNTY, WASHINGTON PRIMARY ELECTION - AUGUST 19, 2008

**To Vote:** Use either blue or black ink. Do not use a felt tip pen or pencil.

**Connect The Head and Tail** of the arrow that points to your choice with a **Single Line** as shown.



- **IF YOU MAKE A MISTAKE:** Draw a line through the entire candidate's name like this: ~~John Doe~~ ← You then have the option of making another choice if you wish.
- **Write-In:** To vote for a person not on the ballot, connect the arrow and write in the name of the person on the line provided.
- **Overvote:** More than one vote for an office or ballot measure will be an overvote and no votes for that office or measure will be counted.
- **More Instructions:** See enclosed instruction insert.

Front

Back

**NOT ALL LEGISLATIVE DISTRICTS ON THIS SAMPLE WILL APPEAR ON YOUR BALLOT. ONLY THE DISTRICT THAT YOU'RE ENTITLED TO VOTE IN WILL APPEAR. THE OFFICE OF PRECINCT COMMITTEE OFFICER WILL APPEAR ON YOUR BALLOT.**

**READ:** Each candidate for partisan office may state a political party that he or she prefers. A candidate's preference does not imply that the candidate is nominated or endorsed by the party, or that the party approves of or associates with that candidate.

**FEDERAL**  
Partisan Office

**U.S. REPRESENTATIVE DISTRICT NO. 2**  
2 YEAR TERM Vote For One

Rick Bart (Prefers Republican Party) ←

Rick Larsen (Prefers Democratic Party) ←

Doug Schaffer (Prefers Democratic Party) ←

Glen S. Johnson (Prefers Democratic Party) ←

Write-In ←

**STATE OF WASHINGTON**  
Partisan Offices

**GOVERNOR**  
4 YEAR TERM Vote For One

Dino Rossi (Prefers G.O.P. Party) ←

Will Baker (Prefers Reform Party) ←

Christine Gregoire (Prefers Democratic Party) ←

Duff Badgley (Prefers Green Party) ←

John W. Aiken Jr. (Prefers Republican Party) ←

Christian Pierre Joubert (Prefers Democratic Party) ←

Christopher A. Tudor (States No Party Preference) ←

Javier O. Lopez (Prefers Republican Party) ←

Mohammad Hasan Said (States No Party Preference) ←

James White (Prefers Independent Party) ←

Write-In ←

**LIEUTENANT GOVERNOR**  
4 YEAR TERM Vote For One

Brad Owen (Prefers Democratic Party) ←

Marcia McCraw (Prefers Republican Party) ←

Arlene A. Peck (Prefers Constitution Party) ←

Jim Wiest (Prefers G.O.P. Party) ←

Randel Bell (Prefers Democratic Party) ←

Write-In ←

**SECRETARY OF STATE**  
4 YEAR TERM Vote For One

Sam Reed (Prefers Republican Party) ←

Mark Greene (Prefers Party Of Commons Party) ←

Jason Osgood (Prefers Democratic Party) ←

Marilyn Montgomery (Prefers Constitution Party) ←

Write-In ←

# Sample Ballot

<b>STATE TREASURER</b>		<b>STATE SENATOR DISTRICT NO. 39</b>		<b>STATE REPRESENTATIVE DISTRICT NO. 42 POSITION NO. 1</b>	
4 YEAR TERM	Vote For One	4 YEAR TERM	Vote For One	2 YEAR TERM	Vote For One
Allan Martin <small>(Prefers Republican Party)</small>	←	Fred Walser <small>(Prefers Democratic Party)</small>	←	Mark Flanders <small>(Prefers Democratic Party)</small>	←
Jim McIntire <small>(Prefers Democratic Party)</small>	←	Val Stevens <small>(Prefers Republican Party)</small>	←	Doug Ericksen <small>(Prefers Republican Party)</small>	←
ChangMook Sohn <small>(Prefers Democratic Party)</small>	←	Write-In	←	Write-In	←
Write-In	←	<b>STATE REPRESENTATIVE DISTRICT NO. 39 POSITION NO. 1</b>		<b>STATE REPRESENTATIVE DISTRICT NO. 42 POSITION NO. 2</b>	
<b>STATE AUDITOR</b>		2 YEAR TERM		Vote For One	
4 YEAR TERM	Vote For One	Dan Kristiansen <small>(Prefers R Party)</small>		2 YEAR TERM	
Brian Sonntag <small>(Prefers Democratic Party)</small>	←	Scott Olson <small>(Prefers Democratic Party)</small>		Vote For One	
Glenn Freeman <small>(Prefers Constitution Party)</small>	←	Write-In		Kelli Linville <small>(Prefers Democratic Party)</small>	
J. Richard (Dick) McEntee <small>(Prefers Republican Party)</small>	←	Write-In		Jere Hawn <small>(Prefers Republican Party)</small>	
Write-In	←	<b>STATE REPRESENTATIVE DISTRICT NO. 39 POSITION NO. 2</b>		Write-In	
<b>ATTORNEY GENERAL</b>		2 YEAR TERM		Vote For One	
4 YEAR TERM	Vote For One	Kirk Pearson <small>(Prefers Republican Party)</small>		<b>STATE JUDICIAL</b>	
John Ladenburg <small>(Prefers Democratic Party)</small>	←	David E. Personius <small>(Prefers Democratic Party)</small>		Nonpartisan Offices	
Rob McKenna <small>(Prefers Republican Party)</small>	←	Samantha Hicks <small>(States No Party Preference)</small>		<b>STATE SUPREME COURT JUSTICE POSITION NO. 3</b>	
Write-In	←	Write-In		6 YEAR TERM	
<b>COMMISSIONER OF PUBLIC LANDS</b>		<b>STATE SENATOR DISTRICT NO. 40</b>		Vote For One	
4 YEAR TERM	Vote For One	4 YEAR TERM		Vote For One	
Peter J. Goldmark <small>(Prefers Democratic Party)</small>	←	Hue Beattie <small>(Prefers True Democratic Party)</small>		Mary Fairhurst	
Doug Sutherland <small>(Prefers Republican Party)</small>	←	Steve Van Luven <small>(Prefers Republican Party)</small>		NP	
Write-In	←	Kevin Ranker <small>(Prefers Democratic Party)</small>		Michael J. Bond	
<b>STATE OF WASHINGTON</b>		<b>STATE REPRESENTATIVE DISTRICT NO. 40 POSITION NO. 1</b>		NP	
Nonpartisan Office		2 YEAR TERM		Vote For One	
<b>SUPERINTENDENT OF PUBLIC INSTRUCTION</b>		Dave Quall <small>(Prefers Democratic Party)</small>		Write-In	
4 YEAR TERM	Vote For One	Write-In		<b>STATE SUPREME COURT JUSTICE POSITION NO. 4</b>	
John Patterson Blair	NP	<b>STATE REPRESENTATIVE DISTRICT NO. 40 POSITION NO. 2</b>		6 YEAR TERM	
Don Hansler	NP	2 YEAR TERM		Vote For One	
Randy Dom	NP	Jeff Morris <small>(Prefers Democratic Party)</small>		Charles W. Johnson	
David Blomstrom	NP	Howard Pellett <small>(Prefers Green Party)</small>		NP	
Enid Duncan	NP	Write-In		C. F. (Frank) Vulliet	
Teresa (Terry) Bergeson	NP	<b>STATE REPRESENTATIVE DISTRICT NO. 40 POSITION NO. 2</b>		NP	
Write-In	←	2 YEAR TERM		Vote For One	
<b>STATE OF WASHINGTON</b>		Vote For One		James M. Beecher	
Partisan Offices		<b>INSURANCE COMMISSIONER</b>		Write-In	
4 YEAR TERM		4 YEAR TERM		Vote For One	
Vote For One		Mike Kreidler <small>(Prefers Democratic Party)</small>		<b>STATE SUPREME COURT JUSTICE POSITION NO. 7</b>	
John R. Adams <small>(Prefers Republican Party)</small>		Write-In		SHORT & FULL 6 YEAR TERM	
Curtis Fackler <small>(States No Party Preference)</small>		<b>STATE REPRESENTATIVE DISTRICT NO. 40 POSITION NO. 1</b>		Vote For One	
Write-In		2 YEAR TERM		Vote For One	
<b>STATE OF WASHINGTON</b>		Vote For One		Debra L. Stephens	
Nonpartisan Office		<b>WHATCOM COUNTY JUDICIAL</b>		NP	
Partisan Offices		Nonpartisan Office		Write-In	
<b>INSURANCE COMMISSIONER</b>		<b>SUPERIOR COURT JUDGE POSITION NO. 3</b>		4 YEAR TERM	
4 YEAR TERM		Vote For One		Vote For One	
Vote For One		Douglass R. Shepherd		NP	
Mike Kreidler <small>(Prefers Democratic Party)</small>		Chuck Snyder		NP	
John R. Adams <small>(Prefers Republican Party)</small>		Write-In		Write-In	
Curtis Fackler <small>(States No Party Preference)</small>		<b>Election of Political Party Precinct Committee Officer</b>		Precinct Committee Officer is a position in each major political party. For this office only: If you consider yourself a Democrat or Republican, you may vote for a candidate of that party. For a Write-in candidate, include the party.	
Write-In		Write-In		Write-In	

## Where Can I Deposit My Ballot?

*If you do not wish to return your ballot by mail, the following ballot drop box locations will be available:*

### **Ballot Drop Box Locations Open 20 Days Prior To Election Day**

#### **Whatcom County Auditor's Office**

Whatcom County Courthouse  
311 Grand Ave., Suite 103  
Bellingham, WA

HOURS: Monday – Friday  
8:30 a.m. to 4:30 p.m.  
**Election Day Only: 7:00 a.m. to 8:00 p.m.**

**OR**

#### **Curbside Ballot Drop Box**

311 Grand Avenue  
(near Courthouse Rotunda)  
Bellingham, WA

OPEN: 20 Days Prior to Election  
**Election Day: Closes at 8:00 p.m.**



### **Ballot Drop Box Locations – Election Day ONLY**

DROP BOX HOURS:	7:00 a.m. – 8:00 p.m.
Blaine City Hall:	344 H Street, Blaine, WA
Everson Fire Station:	101 East Main St., Everson, WA
Ferndale Library:	2222 Main St., Ferndale, WA
Kendall Fire Station:	7528 Kendall Rd., Deming, WA
Lynden Public Library:	216 4th St., Lynden, WA

### **If You Have Not Received Your Ballot**

If you have not received your ballot by August 4, 2008, please contact the Whatcom County Elections Division at (360) 676-6742 or TTY (360) 738-4555, Monday through Friday, 8:30 a.m. to 4:30 p.m.

**Washington State Law Prohibits Ballots Deposited  
After 8:00 p.m. on Election Day From Being Counted.**

## Voter Information

### **Are You A Registered Voter?**

If you are a United States citizen and are registering to vote for the first time in the State of Washington, you will need to do so in person at the Whatcom County Auditor's Office no later than August 4, 2008, in order to vote in the August 19, 2008 Primary.

### **Need a Replacement Ballot?**

If your ballot is damaged or lost, a replacement ballot may be obtained by calling the Whatcom County Elections Division at (360) 676-6742 or TTY (360) 738-4555, Monday through Friday, 8:30 a.m. – 4:30 p.m.

### **Your Right to Privacy**

Every voter has the right to vote his or her ballot in secret. Any person attempting to vote when he or she is not entitled, or who falsely signs the affidavit, shall be guilty of a felony, punishable by imprisonment for not more than five years or a fine of not more than ten thousand dollars, or both fine and imprisonment.

### **Where Are The State Measures?**

State measures will appear on the General Election Ballot. The General Election will be held on November 4, 2008. A statewide voters' pamphlet, prepared by the Secretary of State's Office, will be delivered to every household in mid-October with information on measures. This information will also be available on the website: [www.vote.wa.gov](http://www.vote.wa.gov)

### **Who Is Eligible To Vote?**

To register to vote, you must be:

- A United States citizen
- 18 years of age on or before the next election
- A legal resident of the State of Washington
- Not currently denied civil rights as a result of a felony conviction

### **How Can I Register?**

A citizen may register to vote by: (1) completing the registration form online at [www.vote.wa.gov](http://www.vote.wa.gov) *only if* you have a Washington State Driver's License or a Washington State I.D. card; (2) completing the Mail-In Voter Registration Form and mailing it to the preprinted return address on the form, or (3) by completing the form in person at the Whatcom County Auditor's Office, Elections Division.

### **Where Can I Obtain A Form?**

- Complete the registration form online at [www.vote.wa.gov](http://www.vote.wa.gov) *only if* you have a Washington State Driver's License or a Washington State I.D. card
- Whatcom County Auditor's Office, Whatcom County Courthouse, 311 Grand Ave., Suite 103, Bellingham, WA
- The Mail-In Voter Registration Form can be downloaded from the Secretary of State's website: [www.secstate.wa.gov](http://www.secstate.wa.gov)
- City and Town Halls
- Regional libraries, public schools, and City of Bellingham Fire Department
- Most state and federal agencies (Social Security, Congressional, etc.)

## Voter Information

### **When Can I Change My Voter Record?**

Citizens may register to vote at any time. However, the registration must be postmarked or received at least 30 days prior to an election in order to vote in that election.

A citizen that is not currently registered to vote in the State of Washington may register in person at the Auditor's Office, Elections Division up to 15 days prior to an election.

### **Name Change**

A name change for voter registration requires completion of a new registration form. Information indicating the former name, address, and signature plus the new name and signature must be provided.

### **Let Us Know When You Move**

If your mailing or residence address has changed, your voter record needs to be updated. You can easily update your record by one of the following two ways:

- Online at [www.whatcomcounty.us/auditor](http://www.whatcomcounty.us/auditor) or at [www.vote.wa.gov](http://www.vote.wa.gov)
- Call the Auditor's Office, Elections Division at (360) 676-6742 or TTY (360) 738-4555

A new voter registration card will be mailed after your address change is processed.

### **When to Cancel Registrations**

One of the challenges we face is keeping track of registered voters who have moved out of Whatcom County or who have recently passed away.

- Your signature is required to cancel your voter registration.
- If a family member has passed away, contact the Elections Division and a form will be mailed for you to complete.

### **Questions?**

If you have questions, please call the Whatcom County Auditor's Office, Elections Division at (360) 676-6742 or TTY (360) 738-4555, Monday through Friday, 8:30 a.m. – 4:30 p.m.

## SPECIAL NOTICE

### **When Will Vote By Mail Ballots Be Mailed?**

Vote by mail ballots are scheduled to be mailed starting July 30, 2008.

If you have not received your ballot by August 4, 2008, please contact the Whatcom County Elections Division at (360) 676-6742 or TTY (360) 738-4555, Monday through Friday, 8:30 a.m. to 4:30 p.m.

### **BALLOTS WITH LATE POSTMARKS CANNOT BE COUNTED**

#### **MAIL YOUR BALLOT EARLY!**

Remember that your ballot needs to be postmarked no later than Election Day, August 19, 2008, to be counted.