

Whatcom County Official Local

Voters' Pamphlet

November 4, 2014 General Election



Published by the Whatcom County Auditor's Office
www.whatcomcounty.us/auditor



Whatcom County Official Local

Voters' Pamphlet

November 4, 2014 General Election

Table of Contents

Auditor's Letter to Voters	51
Accessible Voting Unit	51
Voter Information	52
Sample Ballot	53-55
Candidates.....	56-72
Prosecuting Attourney.....	56
District Court Judge	57-58
Public Utility District.....	59
Charter Review Commission	60-72
Ballot Measures	73-77
Returning Your Ballot.....	78
My Vote and Moving Information	79
Ballot Measure Complete Text	80-82

Participating Jurisdictions:

Whatcom County, Public Utility District 1, City of Blaine, City of Ferndale, Whatcom County Fire Protection District 11, Whatcom County Fire Protection District 18, Lynden Regional Park and Recreation District 3.

Cover Photo By: Morgan Kalkwarf

Who donates to campaigns?

View contributors for candidates and measures

Public Disclosure Commission

www.pdc.wa.gov

Toll Free (877) 601-2828

Dear Voters,

I'd like to share some tips with you that we've seen over time about voting a ballot:

- We really **do** check each signature on every ballot envelope submitted so try to sign it the way you did when you completed the voter registration. If you registered on-line, the signature we have is the one on your driver license. Do not print your name unless that is the way you registered to vote. You will be notified by letter if it doesn't look like your signature and you'll be able to correct it, even after Election Day. Please be sure to respond so we can get it corrected for the future.
- Each green return envelope has the voter's name on it so be sure to sign the voter's declaration on the correct envelope and send your ballot in your envelope.
- Each ballot must come in its own green return envelope with the voter's signature so do not send two ballots in one envelope.
- Don't just drop a security envelope containing a ballot in a drop box. The green return envelope must be signed and come with every ballot submitted.
- You don't have to vote for every race or measure, nor do you need to write someone in. You can skip any race or measure that you aren't sure about and the rest of your votes will count. Ballots with write-in votes get special handling and write-ins of anyone who is not a registered voter slows down ballot processing and adds costs to the election.
- While some may want to wait until the last minute to see if any NEWS happens right before Election Day, if you know how you want to vote, do it early. The more ballots we have here on election night the more count we will be able to release.
- Make sure your ballot is returned on time. **Drop boxes close promptly at 8:00 p.m. on Election Day.** If you are mailing your ballot, make sure it is postmarked by Election Day. Post offices have different cut-off times for same day postmarking; the **USPS recommends mailing your ballot by Monday, November 3**, to ensure it is postmarked on time.

It's important that every valid ballot get counted. We're happy to receive and process your ballot and make every effort to get the results to you as soon as possible. Happy Voting!

Sincerely,



Debbie Adelstein
Whatcom County Auditor



Accessible Voting Unit



An accessible voting unit (AVU) is federally required. It is equipped with visual and audio technology that allows voters with impaired vision and/or physical disabilities to vote a secret ballot. The AVU is an accurate and secure way to vote.

Where: Whatcom County Auditor's Office
Whatcom County Courthouse
311 Grand Ave., Suite 103, Bellingham

When: Oct. 15 – Nov. 3: 8:30 a.m. – 4:30 p.m.
Nov. 4, Election Day: 8:30 a.m. – 8:00 p.m.

How can I register to vote?

Washington offers three ways to register to vote:

- Online at www.myvote.wa.gov (if you have a current WA State driver's license or current WA State I.D. card).
- By mail.*
- In person at the Whatcom County Auditor's Office, Election Division.

When is the last day I can register to vote?

Mail-in or online registrations must be postmarked or received no later than 29 days before an election in order to vote in *that* election.

If you are not registered to vote in the State of Washington, register in person at the Election Division of the Auditor's Office no later than 8 days before an election.

What do I need to do to change my name?

Choose one of the following options:

- Online at www.myvote.wa.gov
- Complete an update form in person at the Auditor's Office.
- Complete a new voter registration form.*

Contact Information for Major Parties

Democratic Headquarters

215 W. Holly St., Suite B-27
Bellingham, WA 98225
Phone: (360) 647-7661

Republican Headquarters

2321 E. Bakerview, Ste B
Bellingham, WA 98226
Phone: (360) 734-5215

How do I change my mailing and/or residence address?

Updating your record is easy!

Address Change *Within* Whatcom County

Choose **one** of the following options:

- Online at www.myvote.wa.gov
- Call the Auditor's Office, Election Division at (360) 676-6742. We gladly accept relay calls.
- E-mail the Auditor's Office at: elections@co.whatcom.wa.us
- Complete and mail a new voter registration form to the Whatcom County Auditor's Office.*

Address Change *Outside* Whatcom County

Choose **one** of the following options:

- Online at www.myvote.wa.gov
- Complete and mail a new voter registration form to your county of residence.*

***Registration forms are available at city halls and libraries. You may also call the Whatcom County Auditor's Office, Election Division at (360) 676-6742 to have a form mailed to you. We gladly accept relay calls.**

Questions?

Call the Whatcom County Auditor's Office, Election Division

(360) 676-6742, Mon. – Fri., 8:30 a.m. – 4:30 p.m.

We gladly accept relay calls.

E-mail: elections@co.whatcom.wa.us

Additional Voter Information is Available at:

www.whatcomcounty.us/auditor


Sample Ballot

Whatcom County, Washington

General Election - November 4, 2014

Not all districts or measures on this sample will appear on your ballot. Only the districts or measures that you're entitled to vote on will appear.

TO VOTE: Use blue or black ink to connect the arrow by your choice with a single line. Do **NOT** use felt tip pen or pencil.

Example: 

HOW TO CHANGE A VOTE: Draw a line through the incorrect choice. You have the option of making another choice.

WRITE-IN: To vote for a person not on the ballot, connect the arrow and write in the name of the person on the line provided.

STATE MEASURES

Initiatives to the People

Initiative Measure No. 1351

Initiative Measure No. 1351 concerns K-12 education. This measure would direct the legislature to allocate funds to reduce class sizes and increase staffing support for students in all K-12 grades, with additional class-size reductions and staffing increases in high-poverty schools.

Should this measure be enacted into law?

- Yes
- No

Initiatives to the Legislature

Initiative Measure No. 591

Initiative Measure No. 591 concerns firearms. This measure would prohibit government agencies from confiscating guns or other firearms from citizens without due process, or from requiring background checks on firearm recipients unless a uniform national standard is required.

Should this measure be enacted into law?

- Yes
- No

Initiative Measure No. 594

Initiative Measure No. 594 concerns background checks for firearm sales and transfers. This measure would apply currently used criminal and public safety background checks by licensed dealers to all firearm sales and transfers, including gun show and online sales, with specific exceptions.

Should this measure be enacted into law?

- Yes
- No

Advisory Votes

Advisory Vote No. 8 **Senate Bill 6505**

The legislature eliminated, without a vote of the people, agricultural excise tax preferences for various aspects of the marijuana industry, costing an estimated \$24,903,000 in the first ten years, for government spending. This tax increase should be:

- Repealed
- Maintained

Advisory Vote No. 9 **Engrossed Substitute House Bill 1287**

The legislature imposed, without a vote of the people, the leasehold excise tax on certain leasehold interests in tribal property, costing an estimated \$1,298,000 in the first ten years, for government spending. This tax increase should be:

- Repealed
- Maintained

READ: Each candidate for partisan office may state a political party that he or she prefers. A candidate's preference does not imply that the candidate is nominated or endorsed by the party, or that the party approves of or associates with that candidate.

FEDERAL

U.S. Representative Congressional District 1 **Partisan Office, 2 Year Term, Vote for One**

Suzan DelBene (Prefers Democratic Party)
Pedro Celis (Prefers Republican Party)

FEDERAL (Cont.)**U.S. Representative Congressional District 2
Partisan Office, 2 Year Term, Vote for One**

Rick Larsen (Prefers Democratic Party)
B.J. Guillot (Prefers Republican Party)

STATE OF WASHINGTON**State Representative District 40 Position 1
Partisan Office, 2 Year Term, Vote for One**

Kristine Lytton (Prefers Democratic Party)
Daniel R. Miller (Prefers Republican Party)

**State Representative District 40 Position 2
Partisan Office, 2 Year Term, Vote for One**

Jeff Morris (Prefers Democratic Party)

State Senator District 42**Partisan Office, 4 Year Term, Vote for One**

Doug Ericksen (Prefers Republican Party)
Seth Fleetwood (Prefers Democratic Party)

**State Representative District 42 Position 1
Partisan Office, 2 Year Term, Vote for One**

Satpal Sidhu (Prefers Democratic Party)
Luanne VanWerven (Prefers Republican Party)

**State Representative District 42 Position 2
Partisan Office, 2 Year Term, Vote for One**

Vincent Buys (Prefers Republican Party)
Joy Monjure (Prefers Democratic Party)

WHATCOM COUNTY**Prosecuting Attorney****Partisan Office, 4 Year Term, Vote for One**

Dave McEachran (Prefers Republican Party)

STATE JUDICIAL**State Supreme Court Justice Position 1
Nonpartisan, 2 Year Unexpired Term, Vote for One**

Mary Yu

**State Supreme Court Justice Position 3
Nonpartisan, 6 Year Term, Vote for One**

Mary E. Fairhurst

**State Supreme Court Justice Position 4
Nonpartisan, 6 Year Term, Vote for One**

Eddie Yoon
Charles W. Johnson

**State Supreme Court Justice Position 7
Nonpartisan, 6 Year Term, Vote for One**

Debra L. Stephens
John (Zamboni) Scannell

WHATCOM COUNTY JUDICIAL**District Court Judge Position 1
Nonpartisan, 4 Year Term, Vote for One**

David Grant

**District Court Judge Position 2
Nonpartisan, 4 Year Term, Vote for One**

Matt Elich

WHATCOM COUNTY**Public Utility District 1 Commissioner District 1
Nonpartisan, 6 Year Term, Vote for One**

Bob Burr
Jeffrey McClure

**Charter Review Commission District 1
Nonpartisan, 1 Year Term, Vote for up to Five**

Todd Donovan
Delaine (De) Clizbe
Larry Helm
Dick Donahue
Bob Hall
Kent S. Murray
Stoney Bird
Bob Burr
Bruce Clawson
Tom Walstrom
Kevin Byford
Barbara Ryan
Michele Stelovich
Thomas Stuen
Eli Mackiewicz
Orphalee Smith
Nancy Metcalf
Anthony (Tony) Wallace
Alison (Alie) Walker

**Charter Review Commission District 2
Nonpartisan, 1 Year Term, Vote for up to Five**

Ben Elenbaas
Chet Dow
Stan Snapp
Judd Morse
Susan Gribbin
Sherryl (Sherry) Nelson
Rebecca Boonstra
Atul Deshmane
Cliff Langley
Ken Bell
Kate Blystone
Branden Brink
Matt Weeda
Bob Johnson
Larry Nicholas
Joe Elenbaas
Bob Bandarra

WHATCOM COUNTY (Cont.)

**Charter Review Commission District 3
Nonpartisan, 1 Year Term, Vote for up to Five**

- Yvonne Goldsmith
- Jon Mutchler
- Wes Kentch
- Richard May
- Karl Uppiano
- Chris Johnson
- John K. Munson
- Ralph Black
- Eileen Sobjack
- John Lesow
- Linda Cain
- Nick Evans

CITY OF BLAINE

**City of Blaine
Proposition No. 2014-1
Change of Name of the City of Blaine to City of Blaine Harbor**

Shall the name of the City of Blaine be changed to the City of Blaine Harbor?

Yes _____ No _____

CITY OF FERNDALE

**City of Ferndale
Proposition No. 2014-1
Street Construction & Maintenance Tax on the Retail Sale of Vehicle Fuel**

Shall the City of Ferndale impose a tax of up to one cent (\$0.01) per gallon on the retail sale of motor vehicle fuel and motor vehicle special fuel, exempting the first 60,000 gallons per month, per fuel station, from collection of the tax in accordance with RCW 82.47, within city limits to be used for construction and maintenance of streets as specified in Ferndale City Council Resolution No. 14-07-07-A?

Yes _____ No _____

WHATCOM COUNTY FIRE PROTECTION DISTRICT 11

**Whatcom County Fire Protection District 11
Proposition No. 2014-1
Increase of Previous Property Tax Levies**

The Board of Commissioners of Whatcom County Fire Protection District 11 adopted Resolution No. 2014-224 concerning a proposition to finance maintenance, operations, and capital facilities. This measure would increase the District's 2014 regular property tax levy to \$1.49 per \$1,000.00 of assessed valuation for collection in 2015. The funds generated by the levy will allow the District

to keep up with inflation, replace apparatus and equipment and maintain and improve services to the community. The maximum allowable levy in 2014 shall serve as the base for subsequent levy limitations as provided by chapter 84.55 RCW. Should this proposition be:

Approved _____ Rejected _____

WHATCOM COUNTY FIRE PROTECTION DISTRICT 18

**Whatcom County Fire Protection District 18
Proposition No. 2014-1
Restoring Property Tax Levy for Fire Protection & Emergency Medical Services**

The Board of Whatcom County Fire Protection District No. 18 adopted Resolution No. 2014-03 concerning a proposition to maintain and adequately fund the District's operations.

This proposition authorizes the District to restore its regular property tax levy at \$1.00 per \$1,000 of assessed value to be assessed in 2014 and collected in 2015. The funds will maintain and improve fire protection and emergency medical service levels and replace the funds lost due to the expiring EMS levy. The maximum allowable levy in 2014 shall serve as the base for subsequent levy limitations as provided by chapter 84.55 RCW. Should this proposition be:

Approved _____ Rejected _____

LYNDEN REGIONAL PARK AND RECREATION DISTRICT 3

**Lynden Regional Park and Recreation District 3
Proposition No. 2014-1
Restroom and Parking Lot Construction Bonds - \$1,000,000**

The Board of Commissioners of Lynden Regional Parks and Recreation District, Washington, passed Resolution No. 2014-1 concerning this proposition which authorizes the District to install restroom facilities, add parking areas and improve and pave existing parking areas utilized for the District's Bender Road property, to issue \$1,000,000 of general obligation bonds maturing within a maximum term of 20 years to finance said project, and to levy property taxes annually in excess of regular property tax levies to repay such bonds, all as provided in Resolution No. 2014-1. Should this proposition be:

Approved _____ Rejected _____

Dave McEachran

(Prefers Republican Party)



Unopposed

Elected Experience: Elected as Whatcom County Prosecuting Attorney in 1975, and reelected for nine four year terms.

Other Professional Experience: Past president Washington Prosecuting Attorneys Association; Executive Board High Intensity Drug Trafficking Area; Gubernatorial appointments to Washington State Corrections Standards Board, Jail Commission, Death Investigations Council, Washington State Forensics Investigations Council, and presently serving as council chairman.

Education: Graduate of Northern Michigan University 1968. Graduate of University of Colorado School of Law 1971;

Community Service: past president; past board member Whatcom County Boys and Girls Club; member Domestic Violence Commission; past elder First Presbyterian Church.

Statement: I was first elected to the office of Whatcom County Prosecuting Attorney in 1975, after having served as a deputy prosecutor for two and one half years, and I am now completing my tenth term in office. I am the longest serving elected prosecutor in the State of Washington. I am presently directing a staff of fifty people including twenty two attorneys, and I handle an active caseload.

One of the major accomplishments in my past 39 years in office has been the development of a team approach that combines my office and all of the law enforcement agencies in this county. With the high level of crime and dwindling resources, a team approach is vital.

In addition to the prosecution of criminal cases I also represent Whatcom County and its elected and appointed officials as legal counsel.

I am presently the chairman of the Forensic Investigations Council which oversees the State Toxicology Laboratory and the State Crime Laboratory system. I have served as the president of the Washington State Association of Prosecuting Attorneys, and a lecturer for the National District Attorneys Association and the Washington State Association of Prosecuting Attorneys.

Contact: DSMcEACHRAN@COMCAST.NET

David Grant

(Nonpartisan)



Unopposed

Legal/Judicial Experience: *Judge*, Whatcom County District Court, trial judge hearing criminal and civil trials since 2005. Presiding Judge responsible for overseeing court administration since 2009. *Superior Court Elected Judge Pro Tempore* since 2007. *Deputy Prosecutor*, Whatcom County Prosecutor's Office, 1986 – 2005, 12 years criminal trial prosecutor; 6 years civil attorney advising and litigating cases for elected officials, county departments, and the people of Whatcom County.

Other Professional Experience: Police Officer, Lincoln, Nebraska.

Education: *Law Degree*, University of Nebraska; *Master's Degree*, Criminal Justice, Michigan State University; *Bachelor's Degree*, Criminal Justice, University of Nebraska.

Community Service: Whatcom Dispute Resolution Center; District & Municipal Court Judges' Association; Washington Pilots Association.

Statement: Judge Grant has served on the District Court bench since 2005. He endeavors to make the court more efficient and responsive to community needs. He has developed new programs and procedures for District Court addressing domestic violence, mental health, mediation, and internet access to the court. Although budgetary constraints proved challenging, these innovations were implemented within budget.

Judge Grant has presided over hundreds of criminal and civil trials. As a prosecutor, he spent 18 years practicing law in trial and appellate courts, including the Washington Supreme Court. He is experienced in land use, industrial permitting, and environmental laws. He is experienced in weighing the individual liberty and community safety interests at stake in criminal trials. Being a trial judge, he is well versed in criminal law, civil law, and litigation practice.

Judge Grant values and protects our rights and liberties, and is committed to upholding our laws and Constitution. He brings to court fairness, common sense, and respect for all people. Grant is a proven, hardworking, and impartial judge. He would be honored to have your vote.

Contact: (360) 671-6221
reelectjudgegrant@gmail.com

Matt Elich*(Nonpartisan)***Unopposed**

Legal/Judicial Experience: District Court Judge, District Court Commissioner, pro-tem Hearing Examiner for Whatcom and Island Counties, prosecutor for the City of Bellingham, City Attorney for Blaine and Nooksack, private law practice for many years before joining the District Court bench in 2001.

Other Professional Experience: Commercial fisherman/Alaska and Washington.

Education: Graduate, Sehome High School, 1973. Graduate, University of Washington, Phi Beta Kappa, Cum Laude, 1978, and the University of Puget Sound School of Law, 1985.

Community Service: Past Board Member Children's Museum, Big Brothers/Sisters; past member Bellingham Bay Rotary.

Statement: Judge Elich has been on the District Court bench since 2001 and is the most experienced judge in that court. He brought many new programs to the District Court including the first ever domestic violence calendar, enhanced probation services for both domestic violence offenders and those with mental health issues, volunteer mediators in small claims court, on-line mitigation for traffic tickets, and other programs to facilitate access to the court.

Judge Elich is currently working with other departments to implement a county-wide mental health court in an effort to divert offenders from the criminal justice system and into effective mental health treatment and supervision.

Judge Elich believes that the most important judicial qualities are independence, impartiality and respect for the law and for all who appear in court. He also believes that a judicial officer should constantly strive to assure that litigants, win or lose, leave the courtroom knowing that they have had a full and fair opportunity to present their cases.

Contact: (360) 296-4788
ReElectJudgeElich@gmail.com
www.reelectjudgeelich.com

Bob Burr

(Nonpartisan)



Elected Experience: Vice Chair, Green Party of Washington State, Vice Chair, 40th LD Democrats, Treasurer, Green Party of Whatcom County, President, CCSI.

Other Professional Experience: Vice President, Research and Development for Fortune 500 Company before retiring to Whatcom County in 1995. Owner of Bellingham-based national research and consulting firm from 1996 to 2007.

Education: University of California and Claremont Graduate University

Community Service: Police Selection Board. Activist/leadership roles in multiple issue-based organizations. Past candidate for U.S. Senate and Bellingham City Council. Endorsed by Democrat and Green Parties and by many individuals spanning the political spectrum. See website below.

Statement: Put simply, the Public Utility District (PUD) has not been serving the Public interest. Its chief clients are the large Cherry Point industries. It serves their interests, not ours. The PUD plays a huge role in *Water Availability*-- an area of great concern to farmers and others in the County. It holds unexercised water rights that are largely senior to all groups except the tribes. Last year, the PUD contracted to provide nearly *2 Billion gallons of Nooksack River water* (5.33 million gallons per day) to the proposed Gateway Pacific coal terminal each year for the next 30 years. In the light of known water conflicts and potential shortages, the District was shortsighted and irresponsible to extend such rights. It is sheer madness to waste precious water to water down and ship acre after acre of taxpayer-subsidized coal piles to China. Certainly, *We*, as individuals, and the farms that feed us must come first. *We* will be my priority on the Commission. I also want the PUD to play an active role in bringing clean, renewable energy to the County and in providing broadband to underserved areas. Clearly, it's time for change. Put a Burr in the PUD saddle.

Contact: (360) 676-7199
bobburr@comcast.net
burr4whatcom.com

Jeffrey McClure

(Nonpartisan)



Elected Experience: Commissioner, Whatcom County PUD No. 1, since 2009.

Other Professional Experience: Founding partner of 15-member architectural firm with expertise ranging from master planning to design of large-scale projects in commercial, institutional and public sectors. Partner in renovation of fire-damaged Delft Square in downtown Lynden.

Education: University of Washington, BA Environmental Design, 1977; University of Colorado at Denver, Master of Architecture, 1980.

Community Service: Founding member of the Bellingham City Club. Served as board president of the NW Economic Council, Whatcom Museum Society, Lighthouse Mission and Bellingham City Center Development Authority. Past member of the Bellingham Rotary Club.

Statement: The future of water is uncertain. Climate change, environmental considerations, and ongoing discussions about water rights all influence this complex discussion. The PUD must continue to play a leadership role by providing science-based, innovative solutions to conserving water resources in support of our quality of life as well as jobs in our community. Many key businesses - including Alcoa Intalco Works, BP Cherry Point Refinery, Phillips 66 Ferndale Refinery - and many irrigation customers in the farming community depend on Whatcom County PUD No. 1 to supply water and/or electricity.

The PUD is active countywide with many local water associations. By providing planning expertise, and infrastructure improvements when needed, the PUD helps maintain high water quality standards for all. I've also insisted on making environmental stewardship a high priority. Working with our customers, we've reduced water consumption by several million gallons per day, improving stream flow in the Nooksack River.

A public utility's highest priority is ensuring the stability of the system through the uninterrupted supply of its services at the lowest possible cost. Sound financial management enables PUD No. 1 to operate without seeking property taxes.

Eager to contribute to continued success, I ask for your vote on Nov. 4.

Contact: (360) 676-7733
jeff.m@rmcarchitects.com

Todd Donovan

(Nonpartisan)

I care deeply about Whatcom County, my home for 23 years. I value good government, and believe County government can have a positive influence on our quality of life. I have experience on boards and commissions from my Columbia neighborhood to the County level. I served as Chair of Whatcom Conservation Voters, and with Futurewise Whatcom. I am committed to treating everyone at Commission meetings fairly, and with respect. I have a passion for social justice, for protecting our environment, and I am a union member, a life-long Democrat, married, with two kids and a dog named Dot.



Contact: (360) 647-8520
donovan66@msn.com
www.facebook.com/DonovanCharterReview

Delaine (De) Clizbe

(Nonpartisan)

I am a proud member of the Bellingham and Whatcom County community. I have a Bachelor of Science degree from WWU and hands on experience as a commercial fisherman, home economist, childcare manager and licensed securities assistant. If elected, I will listen and consider each recommendation for changes to our County Charter. I will evaluate each proposed change with two questions: Will it benefit all the citizens of Whatcom County; and is the change practical.



Whatcom County is a wonderful place to live and work; I want to keep it that way. I would be honored to earn your trust.

Contact: (360) 224-2015
delaineforcharter@gmail.com

Larry Helm

(Nonpartisan)

I, with my wife, have lived in Whatcom County for 15 years operating both a small farm and a small business. I have children and grandchildren living here. We need to maintain family living jobs while insuring the environmental health of our community. I retired after a 30 year career as a State Park Superintendent striving to protect over used parks, so I am familiar with the majority of environmental issues facing our unique community. I'm serving on both the CD board and the County Ag committee.



Contact: (360) 961-9584
helmforcharter@gmail.com

Dick Donahue

(Nonpartisan)

I have been a resident of Bellingham and Whatcom County since 1965 following my graduation from Washington State University. Since 1966, I have worked as a self employed financial advisor with individual and business clients. A former business associate was a member of the original Charter Commission when it was adopted in 1978 and I have followed the process closely since that time.



If elected, I want to give proposed changes a thorough review with the question are they practical and what are the benefits? Keep Whatcom County a great place for our families! I appreciate your vote!

Contact: (360) 319-2839
votedick4charterreview@gmail.com

(more candidates for this office) →

Bob Hall

(Nonpartisan)

With no axes to grind, I've generally followed the old adage, "If it ain't broke, don't fix it."

I've been a close observer of county government for over 35 years. I've had a life-long interest in politics and government that included teaching U.S. history and government on the high school level for over 20 years. In 1975, with twelve other freeholders, I helped design a home-rule charter for Clallam County. It was the second such instrument voted into law in this state, after King County's. Don't expect this commission to recommend any major changes in the existing charter.

Contact: rdhall1925@yahoo.com

No Photo Submitted

Kent S. Murray

(Nonpartisan)



I'm Kent Murray and I'm running for Whatcom County Charter Review Commission – District One. I was born and raised in the San Francisco Bay Area, educated in San Luis Obispo, and have worked in California, Illinois, Alaska, and Washington State.

In 1988 I was fortunate to have been hired to work in Bellingham. After 26 years of enjoying the pristine beauty of Bellingham, I feel obligated to return service to this community. That's why I'm running for this volunteer / non-partisan position. I will strongly support Sect. 1.11 of the Charter, protecting the individual's rights in my district.

Contact: (360) 305-6334
murray.at.charter.review@gmail.com

Stoney Bird

(Nonpartisan)

No statement submitted.

No Photo Submitted

Bob Burr

(Nonpartisan)



I will represent you, not special interests, on the Charter Review Commission. What the Constitution is to our Country, the Charter is to our County--with one giant exception. The Charter has no Bill of Rights. We need to add a Community Bill of Rights to make the County more accountable to its people and respectful of our rights to privacy and to a clean, safe and healthy environment.

Imagine a county where the voters make key decisions. Initiative and referendum signature requirements should be relaxed. The Commission should place multiple amendments on the ballot to let *you* decide.

Contact: (360) 676-7199
bobburr@comcast.net

Contact: (360) 647-6696
sjbird@centurylink.net

(more candidates for this office) →

Bruce Clawson

(Nonpartisan)

In 2011, I had the privilege to serve on Bellingham's Capital Facilities Task Force. Over 9 months, this group of citizens worked in a non-partisan way to solve practical problems and establish logical spending priorities. The report of the Task Force was welcomed by two administrations of City government and remains a highly relevant guiding document today. I'm running for the Charter Review Commission using the same principles: I seek to contribute non-partisan, practical work with the priorities of fairness and the common good. This is my first run for public office and I do so as a proud non-partisan.

Contact: (360) 335-4525
bruclaw@gmail.com



Tom Walstrom

(Nonpartisan)

As an alum of the first Charter Commission (Freeholders) of 1978, it is my experience that I offer voters in the choice for Commission member.

I served as Vice-Chairman of that body and was effective in the early organizing of the Commission by gathering info from the Port Angeles Freeholder group to use as an example. I worked effectively to bridge across the aisle with Commission members of other political leanings to accomplish a successful campaign to voters to accept the first Charter for Whatcom County.

Contact: (360) 733-1593
happyswede@comcast.net



Kevin Byford

(Nonpartisan)

No statement submitted.

No Photo
Submitted

Contact: (360) 303-9587
kgb99a@yahoo.com

Barbara Ryan

(Nonpartisan)

After 12 years on the Bellingham City Council, I know that a Charter is key to the ability of a City or County to work smart – openly, cost efficiently, and innovatively. My experience as a manager and information specialist with Planned Parenthood of Delaware, a school district, and several other non-profits taught me to work collaboratively and involve the public. I hold B.S. and M.S.A. degrees in communication and administration. My training and experience qualify me to work with a team to review a County Charter that demands transparency, accountability, and fairness for all Whatcom County citizens.

Contact: (360) 671-8376
barbararyan88@hotmail.com



(more candidates for this office) →

Michele Stelovich

(Nonpartisan)



Reviewing the Whatcom County Charter is important role because it lays out how county government is run and how the powers between Executive and County Council work. It decides how land permits are issued and how for example the Sheriff is an elected official and not appointed. There needs to be broad representation from several walks of life to reflect the people of Whatcom County. I believe I am such a person to fairly evaluate the Charter, continue to hold elected officials accountable for their actions by placing parameters on how government functions and district only voting for county council.

Contact: (425) 931-6522
mstelovich@hotmail.com

Thomas Stuen

(Nonpartisan)



I should be elected to the Charter Review Commission because my 40 year career as an attorney (30 years in Bellingham) give me skill in the evaluation of language used for legal purposes. I would look carefully for the unintended consequences of any proposed change. Our county government is not broken so I am not seeking to change it.

For 20 years I was a Bellingham Civil Service Commissioner, and chaired once the Citizens Committee for the Bellingham school levy. I support several local charities and youth soccer. For more information see my website: Stuenlaw.com.

Contact: (360) 647-0234
tomstuen@comcast.net

Eli Mackiewicz

(Nonpartisan)



Selecting me would ensure that the voice of reason is represented on the commission.

As a commissioner, I would weigh each proposed amendment by considering how it would affect the well-being of Whatcom County voters, not by its benefit to political parties. I believe that the commission shouldn't use the ballot to ask voters to referee partisan squabbles, so I won't support amendments that will force you to choose sides before deciding how to vote. If you would prefer a commission that doesn't make changes to our Charter based on party politics, I would appreciate your vote. Thank you.

Contact: (360) 383-7509
eli4crc@gmail.com

Orphalee Smith

(Nonpartisan)



The Whatcom County Charter should provide a basic operational framework for all allowing flexibility to meet the future needs of the County while sustaining our urban/rural character. The County is confronted with many issues--economic and environmental-which will impact the lives of all County residents. It is important members of the Charter Review Commission keep an open mind and think outside of the box within the constraints of the Charter.

Based on my professional experience and community involvement, I believe I possess the talents required to assist in drafting a workable framework for the future. I ask for your support.

Contact: (360) 734-8951
orphaleesmith@comcast.net

(more candidates for this office) →

Nancy Metcalf*(Nonpartisan)*

Vote Nancy Metcalf for County Charter Review Commission. The Charter Review is your chance to direct our future governance.

Nancy Metcalf's clear goals, communication and determination led her to settle in Whatcom County and become nestled in our vibrant community where she nurtures family, community and career. Clear goals, communication and determination lead Nancy's work to secure the future health and vitality of our community through a Community Bill of Rights. Nancy's clear goals, communication and determination while reviewing the County Charter will provide amendments ensuring Proportional Representation, a Community Bill of Rights, and Integrity of the Initiative Process.

Contact: (317) 525-3737
metcalf.nancy@gmail.com

**Anthony (Tony) Wallace***(Nonpartisan)*

No statement submitted.

*No Photo
Submitted*

Contact: (360) 325-2490
acwallace78@gmail.com

Alison (Alie) Walker*(Nonpartisan)*

Whatcom County is an exceptional place to raise a family, build a business, and enjoy living among breathtaking natural resources. I regard service to this community as a core value, having volunteered and worked for organizations that build local self-reliance and protect our environment. Serving as a Charter Review Commissioner is a natural extension of this service. I would welcome your vote and the chance to work collaboratively with my fellow members to ensure our Charter maintains the principles of good governance and protects those assets vital to Whatcom County: our environment, our strong local economy, and our family-focused community.

Contact: (360) 223-2907
aliewalker@gmail.com



Ben Elenbaas

(Nonpartisan)



On your ballot I am Ben Elenbaas but some of you may know me as Farmer Ben. Whatcom County has been a wonderful place for my family to live and farm. It is this that motivates me to keep it a place where families have the ability to live and work free from government overreach by securing property rights, and the ability to choose a representative government. The Whatcom County Charter can ensure that county government works for you. After overwhelming support from the second district in the past, I humbly ask for your vote again for Charter Review Commission.

Contact: (360) 354-8812
benforcharterreview@gmail.com

Chet Dow

(Nonpartisan)



The best government is government closest to the people. If elected, I will strive to ensure our local government is by the people of Whatcom County, for the people of Whatcom County.

It is imperative that all of Whatcom County be fairly represented on our County Council, including our small cities and our rural community. All voices are needed to shape policies that impact our families, jobs, and quality of life. During my successful business career I applied consensus-building skills throughout. With your vote, I will do my best to represent you. Thank you.

Contact: (360) 592-4345
Chet4Charter@gmail.com

Stan Snapp

(Nonpartisan)



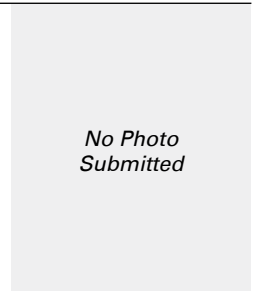
I am a retired dad, with ten grandchildren. My fifty years living, working, volunteering and raising my family cemented my commitment to our county.

My career includes 30 years in the fire service, and volunteering with United Way, Red Cross and Opportunity Council. My six years serving on the Bellingham City Council taught me the value of listening to the many sides of important community concerns. I can build consensus for what the voters will support. I know how to represent the broad issues we all care about and I ask for your vote for county Charter Review Commission.

Contact: (360) 305-0607
stansnapp@gmail.com

Judd Morse

(Nonpartisan)



As a "Home Rule" county, the Whatcom County Charter is arguably the most important governing document we have. Changes made will have measurable, lasting effects on the county and community over the next decade. It's essential that those elected to the Charter Review Commission work to protect what works and reform areas that need improvement.

If elected your Charter Review Commissioner, I will fight to protect district-free voting rights. I will also push for an election reform that allows council candidates to take actual stands on controversial issues, and for a council body that is more representative of its residents.

Contact: (580) 320-7336
juddmorse@gmail.com

(more candidates for this office) →

Susan Gribbin

(Nonpartisan)

I am seeking a District 2 position on the Charter Review Commission to serve the people and place I have called home since 1984. The review process will spur new dialogue and discussion of the Charter's provisions to keep our government vital and effective.

I have worked 15+ years in the nonprofit sector. My service includes working across the county in rural and urban areas. Currently, I serve on the Bellingham/Whatcom Housing Authority Board and the City of Bellingham's Community Development Advisory Board. I previously served on the Citizens' Transportation Advisory Group of the Whatcom Council of Governments.

Contact: (360) 647-0859
s.gribbin@comcast.net



Sherry (Sherry) Nelson

(Nonpartisan)

As a mom with grandchildren, I care about the future of Whatcom County. I enjoy hiking, biking, and snowshoeing with Mount Baker Club. I love gardening and cultivating homegrown produce. As a retired university educator and music presenter, I serve on the Bellingham Festival of Music board to provide children and diverse audiences access to great music close to home. City Club and local election campaigns engage me in addressing important community concerns. I have 36 years of experience building consensus in arts and education public policy. I ask for your vote to serve as your Charter Review Commissioner.

Contact: (360) 393-3093
nelson.sherry@gmail.com



Rebecca Boonstra

(Nonpartisan)

I am seeking a position on the Whatcom County Charter Review Commission. I am an active listener and a collaborator. I strive to reach common ground whenever possible. I am currently serving as chair of the East Whatcom Community Council and am participating on the Policy & Procedures committee. I have quite a knack for reviewing and discussing policy and I enjoy doing so. In my spare time I enjoy reading and roller-skating.

I believe I will be an asset to the commission. I am a resident of Eastern Whatcom County and I would be delighted to receive your vote.

Contact: (360) 305-5351
rebeccaboonstra@gmail.com



Atul Deshmane

(Nonpartisan)

Hello, my name is Atul Deshmane. I want to play a role in the Charter Review because I bring a unique and important voice to the discussion on land use in our County. I believe we need a balance between individual property owner rights and the rights of community. This is only possible with a can do attitude which embraces conflict and seeks win-win resolution. My background as a professional in renewable energy and a person of color allows me to find amicable solutions. I am often the underdog so I have had to become good at bridging conflicts.

Contact: (206) 446-1333
adeshman@yahoo.com

No Photo
Submitted

(more candidates for this office) →

Cliff Langley

(Nonpartisan)



I am Cliff Langley, a retired Deputy Sheriff. I served Whatcom County for 27 years and that experience has helped me to become a reasonable man, especially in solving difficult issues. I want to maintain the values of Whatcom County and further the principles of the current Home Rule Charter by continuing to “advance justice, inspire confidence, and foster responsibility”. In addition, I want to promote the rights and freedoms of our citizens. I want to help preserve the beauty of Whatcom County and encourage good stewardship of our environment.

See me on Facebook: Cliff Langley for Charter Review.

Contact: (360) 325-2609
Cliff.charterreview@gmail.com

Ken Bell

(Nonpartisan)



After 3 years as part of the Planning Commission it has become clear to me that we need to be vigilant in our effort to keep Whatcom County a place for free enterprise, market economics and sensible regulation. Our framing document should make it easier to farm, create business opportunities and live on our property not harder and more complicated.

The proper framework will keep County government working for the priorities of the individual. My goal will be to ensure that every citizen in the county is heard through their vote.

Contact: (360) 676-5364
voteforken@gmail.com

Kate Blystone

(Nonpartisan)



I first moved to Whatcom County in 1999. I am a land use planner with more than a decade of experience working for the public interest. I understand how to work effectively with people from all different political persuasions and backgrounds. I understand how to write law that does what it intends. We have a tremendous opportunity ahead of us with the Charter Review Commission in 2015. This commission needs to be made up of people who will work together, towards what’s best for the community. You can count on me to put the public interest above all others.

Contact: (360) 961-7749
kate4whatcom@gmail.com

Branden Brink

(Nonpartisan)



As a life long citizen of Whatcom County, I want to preserve the way of life I believe its citizens want. As a representative of District 2, I will support continued protection of property rights for private property owners. I also support equal representation of each district on the Whatcom County council.

As a Charter Review Commissioner I’ll work to ensure that the current charter does not evolve into a document that is detrimental to rural living. I look forward to serving by representing you on the Whatcom County Charter Review Commission District 2 and humbly ask for your vote.

Contact: (360) 354-1664
brinkforcharterreview@gmail.com

(more candidates for this office) →

Matt Weeda

(Nonpartisan)

To the people of Whatcom County: The Charter is the foundation of county government. I will listen to whether you, the people whom I propose to represent, think our county government is adequately and properly organized under the current Charter.

I'm a fourth-generation Weeda to treasure living in Whatcom County. I'm a candidate because I want to serve this unique county. I'm a candidate because I want you to also treasure our county, and to find it a safe home-place, with viable work, where families, individuals, and investments are protected. Citizens should be represented well. Review the Charter with me.

Contact: (360) 201-8789
mattnweeda@gmail.com



Bob Johnson

(Nonpartisan)

I have several years of experience as an elected official: two years as a County Commissioner overseeing budgets, courts, human resources, police. I served on the Capital Area Substance Abuse Commission. I represented the County Employees Retirement System.

I chaired the Township Board of Review for 3 out of the last 4 years I served in Bath, Michigan, 1998-2001. We resolved citizen complaints about property tax assessments. My current occupation prudence in financial decision-making. Fiscal responsibility is a high priority. I hope to have opportunity to use my talents and experience for Whatcom County.

Contact: (360) 354-9903
johnsonbob2@netzero.net



Larry Nicholas

(Nonpartisan)

I'm a 4th generation Bellinghamster, BHS/ WWU '85, married and live on Alabama Hill. A 3rd generation local business owner and member of NFIB. My past service in Scouts, President of Alabama Hill Association and 3 years State Chairman of the Libertarian Party has given me experience in working with different people, viewpoints and issues.

As a business owner, I understand the impact that local business has in creating jobs in a healthy community. I will protect personal and economic liberties. With my deep roots, I can represent the vision of those who made the county what it is.

Contact: (360) 319-3408
larrynicholas@comcast.net



Joe Elenbaas

(Nonpartisan)

Believing County government's role is more to protect our rights, than to control us, I have encouraged this - when elected as a Freeholder and writer of the Charter, and thrice when elected as a Charter Review Commissioner.

At each occasion - to clarify, enhance, and codify that sentiment. This includes authorship of the existing Individual Rights Protection language.

Serving you has been an honor I'd like to repeat. In this matter, you have five votes. Since chance has me at the end of a pretty long list of candidates - Please Save a Vote for Joe Elenbaas!

Contact: (360) 398-1917
joeelenbaas@yahoo.com



(more candidates for this office) →

Bob Bandarra

(Nonpartisan)



Elected me to the Charter Review Commission because I appreciate the rural character and outstanding quality of life Whatcom County provides and desire to maintain it. Items such as District voting verses countywide voting will be an important discussion topic. Consideration of fair compensation for County Council members will allow any Whatcom County resident the opportunity to serve and not just the retired or wealthy. Please help me to assure the life style we have all come to appreciate in Whatcom County continues by casting your vote to place me on the Charter Review Commission in November. Thank you!

Contact: (360) 778-1143
bbandarra@comcast.net

Yvonne Goldsmith

(Nonpartisan)

As a past Charter Review Commissioner (1994 and 2004) I understand each elected Commissioner is tasked with reviewing the charter to determine its adequacy and suitability to the needs of Whatcom County and we can propose amendments if needed. We take input from our community and recommend as a majority the specific amendments for the voters of Whatcom County to approve. Personal opinions should be put aside and listening to each member of our community should be the ultimate goal. I will perform these duties faithfully. I appreciate your trust and your vote for Yvonne Goldsmith. Thank you!



Contact: (360) 927-2310
voteyvonnecharterreview@gmail.com

Jon Mutchler

(Nonpartisan)

I once biked the 105 mile Tour de Whatcom which traverses most of Whatcom County. In that single day one can observe the vast wonders and beauty of our rich environment, the strengths and heritages of great communities, and the diversity and uniqueness of people who make this home.

The charter (our chosen form of government) respects our common and unique values. I will work to maintain the spirit of that charter by respecting individual rights while honoring community. As a current citizen of Ferndale and former resident of Blaine and Bellingham I ask for your vote. Thank you.



Contact: (360) 927-1881
JonMutchler@gmail.com
www.VoteforJon.com

Wes Kentch

(Nonpartisan)

Born in Bellingham, I am a lifelong resident of Whatcom County. I taught public school for 38 years with 34 years in this county. I have been under both the Commissioner and Home Rule Charter forms of government. Our charter provides the fairest and most representative self government for our citizens. I want to insure the charter continues to allow the most citizen input in each council district. I want to represent everyone in the 3rd so call (360-384-4166) or email (wkentch@gmail.com) me with your concerns or possible changes. Please vote Wes Kentch for Charter Review Council District 3.



Contact: (360) 384-4166
wkentch@gmail.com

Richard May

(Nonpartisan)

In my work, play, and public service all around Whatcom county, I learn the concerns of rural, city, business, agriculture, and our diverse population. I currently serve on Blaine Planning Commission, County Appeals Board, and Communities In Schools dropout prevention organization. I organized and won public support for bipartisan local issues including library funding and traffic safety, and served as president of Everson Nooksack Chamber of Commerce while owning businesses with 20 employees. Whatcom residents care about jobs, natural resources, transportation, culture, and livability. I would be responsive and work extra hours to get this charter review done right.



Contact: (360) 220-1624
mastersblend2@aol.com
www.richardmay.us

(more candidates for this office) →

Karl Uppiano

(Nonpartisan)



The Whatcom County Charter is the official specification for the structure and operation of Whatcom County government. I believe it is crucial that the reviewers that you elect, fully understand the principles of good government, individual liberty and self-determination. I have an unwavering commitment to those principles.

I have been a resident of Whatcom County since 1986, and raised four beautiful children here. I wish for them to have the same opportunity to live in this wonderful area that I have. They should not feel compelled to leave the area in order to find family-wage jobs.

Contact: (360) 927-0285
 KarlU4CharterReview@gmail.com
 www.KarlU4CharterReview.com

Chris Johnson

(Nonpartisan)



My name is Chris Johnson, I was born and raised in Whatcom County. I raised my family and have worked here all my life. I was elected Business Manager/Secretary-Treasurer of Laborer’s Local # 276 three times. Negotiations, the grievance process and daily dealings with management and workers, I believe gives me a perspective that would be of value to the commission.

My priorities are Maintain the division of power between the Council and Executive. Keep the County Council positions non-partisan. Oppose district only voting. I would be honored to receive your vote for the Charter Review Commission District 3.

Contact: (360) 734-2527
 chrisjhnsn8@gmail.com

John K. Munson

(Nonpartisan)

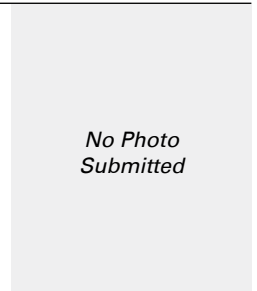


I was born in Bellingham in 1942. I graduated from Ferndale High School in 1960. I worked forty years on the Waterfront in Bellingham. I am politically active and have been involved in campaigns to raise the minimum wage and inform people about the need for a single payer health care. I am a former member of the Bellingham Food Bank board and am presently a board member of the Ferndale Food Bank. I am interested in government and if elected to the board will work to represent and articulate the concerns of the people in the County’s third district.

Contact: (360) 758-7096
 jmunson8@gmail.com

Ralph Black

(Nonpartisan)



No statement submitted.

Contact: (360) 739-4160
 ralphwblack@gmail.com

(more candidates for this office) →

Eileen Sobjack

(Nonpartisan)

As your Charter Review commissioner, I will uphold the important principles of the Charter and advocate reinstating equal representation for Whatcom voters. The Charter provides you with a voice through the Initiative and Referendum process which I'll protect.



My leadership experience includes; elected executive officer for a national board, longtime volunteer, former teacher and past owner of a commercial fishing business. I'm committed to Whatcom County for the benefit of my children and grandchildren who live and work here. I will work hard to represent you and appreciate your vote for Charter Review Commissioner District Three. Contact me at esobjack@gmail.com.

Contact: (360) 366-5520
esobjack@aol.com

John Lesow

(Nonpartisan)

Rural Whatcom County has been my home for 21 years. During that time, I have been an independent voice for transparency and accountability in local government, both in my community and during my two terms on the Whatcom County Planning Commission, where I was a consistent advocate for responsible development and environmental protection.



I feel fortunate to live here. Our Home Rule Charter is as innovative and unique as the citizens of this great County. I will be an effective delegate and insure that everyone, irrespective of District, gets a fair hearing on the issues that affect their lives.

Contact: (360) 945-3170
jlesow@whidbey.net

Linda Cain

(Nonpartisan)

Long time Blaine Resident, residing in Birch Bay.

I support smaller government at all levels, to this end we should make sure that the county council represents individual Whatcom citizens. I support; electing council members by district, not "at large," the county should only provide those services not available privately or by NGOs, all county departments should be subject to performance audits, county spending should be scaled back to reflect the economy, additional impractical projects (such as the proposed land purchase and park in Birch Bay) should not be entertained and we should reduce & control the number of commissions/boards.

No Photo
Submitted

Contact: CharterReview@openrd.com

Nick Evans

(Nonpartisan)

I'm Nick Evans, and I would be honored to have your vote. My family has been in Whatcom County for four generations and I'm proud to call it home. I am running for the Charter Review Commission because I want to protect its core values. The Preamble of our charter calls for the protection of the People from an over reaching government and I intend to use that ideal as the basis for moving forward. I will work hard, on your behalf, to make sure that your liberties are preserved and your voices heard. Visit Nick4Whatcom.com for more info.



Contact: (360) 392-8855
info@nick4whatcom.com
www.nick4whatcom.com

**City of Blaine
Proposition No. 2014-1
Change of Name of the City of Blaine to City of Blaine Harbor**

Shall the name of the City of Blaine be changed to the City of Blaine Harbor?

Yes _____ No _____

EXPLANATORY STATEMENT

City of Blaine Ballot Measure 2014-1 shall determine whether the name for the "City of Blaine" would be changed to the "City of Blaine Harbor". A "yes" vote means you approve the change of the name to the "City of Blaine Harbor". A "no" vote means you reject the change of the name to the "City of Blaine Harbor". If approved by a majority of those voting, the name of the city will be changed.

STATEMENT FOR:

Blaine is our name. Adding 'Harbor' honors our history of fishing, the cannery, lumber mills and marine transport, the industries that got this town started. The city's logo of a fishing boat and The Vigil Memorial in the plaza tell of a history we should be proud to display in our name.

In addition to honoring our heritage, the word 'Harbor' creates a more inviting image of a seaside town and draws attention to our major assets: the water, seabirds and panoramic views. A name that creates a positive visual image will attract more interest and more interest eventually spells economic success for our downtown.

Marketing surveys prove that "Blaine Harbor" would attract more stopovers by curious travelers than "Blaine". More visitors bring more businesses and jobs, and a greater tax base for local improvements. The rewards gained by this inexpensive change will benefit every tax-paying citizen. This measure is endorsed by the Blaine Economic Development Advisory Committee.

The estimated cost is a tiny fraction (0.00187) of the city's annual budget and many changes can occur through attrition, resulting in no extra cost.

No change of address is required since the zip code remains unchanged. School names are also unaffected.

Rebuttal of Statement Against:

The statement against acknowledges the benefit of marketing our town but offers no alternative method to achieve that marketing. The "tangible items" hoped for to revitalize Blaine will cost many times more than this simple proposal. It is not "irresponsible" nor should it be considered divisive, to promote our town. It is time to move beyond the negative rhetoric. This is an economical way for the community to honor our past and enhance our future.

STATEMENT AGAINST:

Blaine residents against the name change don't think it's the answer to revitalize our community. We can market/promote a theme within Blaine without renaming the entire city. We would like to see tax dollars and city resources go toward tangible items that benefit the residents, along with tourists and Canadian consumers.

There are promising projects on the horizon, including additions to parks, retail possibilities, road repairs, and substantial growth in Semiahmoo. Blaine is a city with limited financial resources; therefore, it would be irresponsible to use tax payer dollars on the proposed name change. Projects that actually improve the city for everyone should be the primary focus of our money and energy.

Blaine is located on Drayton Harbor, therefore "Blaine Harbor" is a confusing and repetitive name. Also, a name change would result in our schools and many businesses having different names than the rest of the city. Blaine should remain a supportive, close-knit community, which respects history, tradition and its residents. This proposed name change does not foster that sense of community. We do not want to become a community divided over an unproven name change. Action, not words on a sign, will bring positive change.

Rebuttal of Statement For:

Adding "Harbor" to Blaine DOES change the name, but nothing else. This is simply a complex, unproven, and costly marketing plan.

Based on the city's budget, .00187% equals \$49,435.86. Where does that figure come from? The city hasn't provided a budget or cost for the name change.

There is also no timeline or plan. If this isn't 100% adopted immediately then it is pointless, and we could be a two-name town for 20+ years.

Statement For prepared by: Citizens for Blaine's Future: Paul Schroeder, Trevor Hoskins, Michael Hayden

Statement Against prepared by: We Are Blaine Wa.: Angie Dixon, Colin Hawkins, John Liebert

Statements For, Statements Against, and Rebuttals are the opinions of the authors and have not been checked for grammar or accuracy.

**Complete text can
be found on pg. 80**

**City of Ferndale
Proposition No. 2014-1
Street Construction & Maintenance Tax on the Retail Sale of Vehicle Fuel**

Shall the City of Ferndale impose a tax of up to one cent (\$0.01) per gallon on the retail sale of motor vehicle fuel and motor vehicle special fuel, exempting the first 60,000 gallons per month, per fuel station, from collection of the tax in accordance with RCW 82.47, within city limits to be used for construction and maintenance of streets as specified in Ferndale City Council Resolution No. 14-07-07-A?

Yes _____ No _____

EXPLANATORY STATEMENT

RCW 82.47 authorizes jurisdictions within 10 miles of international border crossings to levy an excise tax on retail sales of motor vehicle fuel for street construction and maintenance projects. As allowed by statute, voter approval of this ballot measure would levy a one penny per gallon fuel tax, and exempt the first 60,000 gallons of fuel per station per month to alleviate impacts on businesses. The City would collect approximately \$178,000 annually and must use the tax for street projects. The tax would help match funds for state and federal project grants and assist with other minor projects.

STATEMENT FOR:

We don't enjoy paying additional taxes, even one as small as a penny per gallon for gas and diesel. But you'd be hard-pressed to find a tax such as this additional one cent per gallon of fuel that will bring greater benefits to Ferndale while still going mostly unnoticed.

Most of our city's sales and property tax revenues cover our essential public safety needs (fire and law enforcement). And because of a relatively small sales tax base (we tend to buy cars, clothing, and electronics in Bellingham), Ferndale struggles to find revenues to repair and improve the 60 miles of roads within our city limits.

Sure, we pay fuel taxes now. But all of that revenue goes first to Olympia and Washington, D.C. before we get a small portion back. However, with your YES vote, 100% of this penny tax will be collected and used only here in Ferndale for road improvements. Further, we will strengthen our ability to provide matching funds when applying for state and federal road grants.

Please **vote YES** on Proposition 1. The longer we wait to find a road maintenance solution, the more expensive our repairs will become. Let's solve this problem now.

Rebuttal of Statement Against:

First, Ferndale voters approved the .2% sales tax, which has already provided matching funds necessary for grants to undertake much needed improvements on Vista, Thornton and Church roads.

Second, all Ferndale gas stations (both large and small) and customers will benefit from the 60,000 gal/month exemption.

Finally, the opponents propose no alternative solution for street repair. This "penny" tax is the most affordable way to solve a problem that won't go away on its own.

STATEMENT AGAINST:

The Ferndale City Council wants the voters to act when the Council lacks the courage: the Council wants us to tax, unfairly, local business owners and neighbors. Stating that it is "only a penny" confirms that the Council misunderstands the realities confronting the businesses they want *US* to tax.

First, Ferndale families are already paying a .2% sales tax for streets in addition to 13 other City-imposed taxes.

Second, only a few gas retailers in Ferndale have monthly sales exceeding the Council's "exemption amount" meaning the tax will be paid by only a couple local businesses.

Third, while the council claims it is "only a penny," these business owners rely on a margin of a few pennies per gallon to pay their employees' wages and other business costs. This "penny" is a tax approaching 10% of their already slim income.

Finally, we all want safe roads; however, this Council spends more on two Ferndale employees than it dedicates to its annual street budget!

At a time when we are looking to attract business to Ferndale, do we want to single out local business people, who support our community in so many ways for a special tax? *NO!*

Rebuttal of Statement For:

A tax going "unnoticed" doesn't make it harmless. This tax unfairly targets Ferndale gas retailers who absorb the tax, not passing it on.

Ferndale voters in 2012 honored the City's request for more monies to complete road projects.

Federal and state grants have strings attached, which increase the cost of projects we could otherwise scope ourselves at lower cost.

Let's solve this problem by properly prioritizing, not moving it to the taxpayer's pocketbook.

Statement For prepared by: Wendy Lawrence & Jon Mutchler

Statement Against prepared by: Yvonne Goldsmith, Karl Uppiano, Sharon Patrick

Statements For, Statements Against, and Rebuttals are the opinions of the authors and have not been checked for grammar or accuracy.

**Complete text can
be found on pg. 80**

**Whatcom County Fire Protection District 11
Proposition No. 2014-1
Increase of Previous Property Tax Levies**

The Board of Commissioners of Whatcom County Fire Protection District 11 adopted Resolution No. 2014-224 concerning a proposition to finance maintenance, operations, and capital facilities. This measure would increase the District's 2014 regular property tax levy to \$1.49 per \$1,000.00 of assessed valuation for collection in 2015. The funds generated by the levy will allow the District to keep up with inflation, replace apparatus and equipment and maintain and improve services to the community. The maximum allowable levy in 2014 shall serve as the base for subsequent levy limitations as provided by chapter 84.55 RCW. Should this proposition be:

Approved _____ Rejected _____

EXPLANATORY STATEMENT

The Fire District provides Fire, Hazardous Materials, and Emergency Medical Services to its citizens. If approved by the voters, the District will be authorized to increase its regular real property taxes from the current rate of \$0.6546 cents to a rate not to exceed \$1.49 per thousand dollars of assessed valuation.

The additional revenue is necessary to keep up with inflation, cover volunteer and employee costs, meet state mandated training requirements and to purchase and maintain equipment, and facilities necessary to provide professional services to our community. The District would assess the new rate in 2014 for collection in 2015.

STATEMENT FOR:

The fire levy under proposition 1 is necessary and reasonable. The additional funding will provide for operations, equipment and resources to keep our firefighters and community safe.

The levy was last voted on over 20 years ago. Technology, training, and certification requirements have changed dramatically since then and the current funding level is now eclipsed by the needs of the community.

All funds raised will be used for district 11 (Lummi Island) rather than being divided between on and off island services. The county may seek to raise taxes for Emergency services in coming years, potentially reducing the portion of funding to Lummi Island directly. Voting yes will help mitigate any damage a future county initiative may have on District 11 funding. Your money stays here.

The levy can only increase by 1 percent each year, even if expenses increase at a greater rate. Voting yes allows a budget and levy rate to be set that provides room for capital improvement, staff cost of living/benefit increases, and provision of a stable emergency funding account.

The 2014 budget was tight and at \$205,899 fell \$34,327 short of revenue (\$171,572). Vote yes and support the volunteers and staff that support the island.

Rebuttal of Statement Against:

No statement submitted.

STATEMENT AGAINST:

No statement submitted.

Rebuttal of Statement For:

No statement submitted.

**Whatcom County Fire Protection District 18
Proposition No. 2014-1
Restoring Property Tax Levy for Fire Protection & Emergency Medical Services**

The Board of Whatcom County Fire Protection District No. 18 adopted Resolution No. 2014-03 concerning a proposition to maintain and adequately fund the District's operations.

This proposition authorizes the District to restore its regular property tax levy at \$1.00 per \$1,000 of assessed value to be assessed in 2014 and collected in 2015. The funds will maintain and improve fire protection and emergency medical service levels and replace the funds lost due to the expiring EMS levy. The maximum allowable levy in 2014 shall serve as the base for subsequent levy limitations as provided by chapter 84.55 RCW. Should this proposition be:

Approved _____ Rejected _____

EXPLANATORY STATEMENT

This proposition will authorize the District to restore its regular real property tax levy rate (which is currently approximately \$.66 per \$1,000 of assessed valuation) to a levy rate of \$1.00 per thousand dollars of assessed valuation.

This measure will replace the funds the District has previously received from its expiring EMS levy. Approval of this measure will prevent a reduction in services and will allow the District to maintain and improve the level of fire protection and emergency medical services. If the levy is approved, the District would assess the new rate in 2014 for collection in 2015.

STATEMENT FOR:

Combining the District's Fire and Emergency Medical Services (EMS) levies into one just makes sense.

Our Fire levy can be spent on both fire and EMS costs and does not expire. Our EMS levy can only be spent on EMS costs and expires every 6 years. The EMS levy must be renewed by voters and the District has to pay the County to have it on the ballot. These funds could be much better spent serving the community.

Our current EMS levy will expire in 2015. These funds are crucial to provide emergency response with well-trained personnel and essential equipment.

Combining the two levies at a set level of \$1 per thousand of assessed value will increase your taxes slightly—six cents (\$.06) per year per thousand of assessed value. That's only a \$12 per year increase on a \$200,000 home. This small increase will ensure that the District's equipment remains up-to-date and operational and that emergency services continue at their current high standard.

Combining the Fire and EMS levies into one will simplify your tax bill, eliminate the need to ever renew the EMS levy and ensure that the District has continued, stable funding.

Vote yes—it just makes sense.

Rebuttal of Statement Against:

No statement submitted.

STATEMENT AGAINST:

No statement submitted.

Rebuttal of Statement For:

No statement submitted.

**Lynden Regional Park and Recreation District 3
 Proposition No. 2014-1
 Restroom and Parking Lot Construction Bonds - \$1,000,000**

The Board of Commissioners of Lynden Regional Parks and Recreation District, Washington, passed Resolution No. 2014-1 concerning this proposition which authorizes the District to install restroom facilities, add parking areas and improve and pave existing parking areas utilized for the District's Bender Road property, to issue \$1,000,000 of general obligation bonds maturing within a maximum term of 20 years to finance said project, and to levy property taxes annually in excess of regular property tax levies to repay such bonds, all as provided in Resolution No. 2014-1. Should this proposition be:

Approved _____ Rejected _____

EXPLANATORY STATEMENT

Proposition 1 authorizes the Board of Commissioners of Lynden Regional Parks and Recreation District to issue \$1,000,000 in general obligation bonds to install restroom facilities, add parking areas and improve and pave existing parking areas utilized for the District's Bender Road property. This project will be completed to all District specifications prior to the sale of bonds. The project will enhance the recreational opportunities at the Bender Road field complex for the residents of the Lynden Park and Recreation District.

STATEMENT FOR:

The Lynden Regional Parks and Recreation District citizenry have an opportunity to enhance the amenities for our community at the Bender Road field complex. The proposed bond will provide funds for the construction of restroom facilities, adding parking areas and improving and paving existing parking areas utilized for the District's Bender Road property.

The construction of permanent restroom facilities will provide cleaner and more sanitary restrooms for use, replacing the existing portable restrooms. The restrooms will be connected to sanitary sewer and have hot running water, which is important given the number of children utilizing the fields. The installation of a new parking strip located along Aaron Drive at the north end of the park will add up to approximately 100 parking spaces by installing paved, angled parking. Improving the existing gravel parking area located in the center of the complex will maximize the use of the parking area. By paving and marking the area, the District can add up to approximately 40 parking spaces and eliminate the issues with dust. Currently, parking is limited and extra spaces are needed.

We support the upgrade to the Bender Road field complex. Please vote yes to improve Bender Fields.

Rebuttal of Statement Against:

No statement submitted.

STATEMENT AGAINST:

No statement submitted.

Rebuttal of Statement For:

No statement submitted.

1 By Mail:

Your ballot **must** be postmarked by Election Day, November 4, 2014.
One \$0.49 cent stamp required.

USPS Recommends Mailing by Monday, November 3.

2 By Drop Box:

No postage needed. Open 24 hours.

Open: October 15

Close: November 4 promptly at 8:00 p.m.

Drop Box Locations:

Bellingham - South parking lot of the Courthouse
(Vehicle access from Grand Avenue only)

WWU Bookstore - 501 High St.

Blaine Library - 610 3rd St.

Deming Library - 5044 Mt. Baker Hwy.

Everson WECU - 106 E. Main St.

Ferndale - *Temporary location:* 5694 2nd Ave.
(Front lawn of City Council Chambers)

Lynden Library - 216 4th St. (Behind building)

Meridian Middle School - 861 Ten Mile Rd.



3 Whatcom County Auditor's Office:

Whatcom County Courthouse
311 Grand Ave., Suite 103, Bellingham, WA

HOURS: Monday – Friday 8:30 a.m. to 4:30 p.m.
Election Day Only: 8:30 a.m. to 8:00 p.m.



If you haven't received your ballot by Friday, October 24, call the Election Division right away!

(360) 676-6742

Monday - Friday, 8:30am - 4:30pm
We gladly accept relay calls.

MyVote

Go to: **MyVote.wa.gov**

MyVote gives you **personalized** voter information, and more:

- Your candidates and ballot measures
- Your ballot status
- Ballot drop boxes and voting centers
- Your districts and elected officials
- A way to update your name and/or address

Moving?

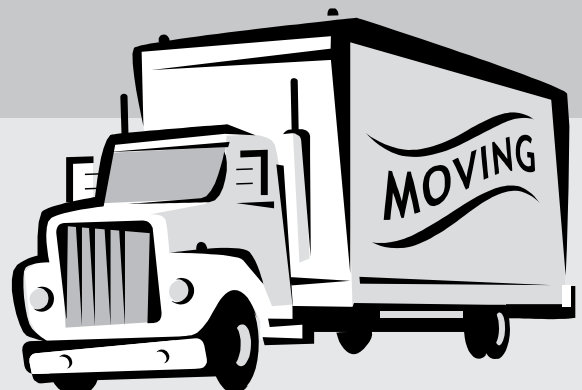
Change your address online at:
MyVote.wa.gov

or

Notify the Election Division:

Phone: (360) 676-6742 We gladly accept relay calls.

E-mail: elections@co.whatcom.wa.us



COMPLETE TEXT - CITY OF BLAINE**RESOLUTION NUMBER NO. 1641-14**

A RESOLUTION OF THE CITY COUNCIL OF THE CITY OF BLAINE, WASHINGTON, PURSUANT TO RCW 35.62.021, SUBMITTING TO THE COUNTY AUDITOR FOR PLACEMENT ON THE BALLOT A PROPOSED NAME CHANGE FROM CITY OF BLAINE TO CITY OF BLAINE HARBOR.

WHEREAS, the City council of the City of Blaine, Washington, pursuant to RCW 35.62.021, sets an election on changing the name from the City of Blaine to City of Blaine Harbor, which shall be held at the next General Election;

NOW, THEREFORE, be it resolved by the City Council of the City of Blaine, Washington, as follows:

1. The following ballot proposition shall be presented to the County Auditor and placed on the ballot at the next general election. The ballot proposition shall read:

“Shall the name of the City of Blaine be changed to the City of Blaine Harbor?”

Yes...

No...”

2. If a majority of the votes are cast in favor of the name change, then the name shall be changed effective thirty (30) days after certification of the election results.

PASSED BY THE CITY COUNCIL OF BLAINE, WASHINGTON, on the 9th day of June, 2014, and approved by the Mayor on the same day. **CITY OF BLAINE, WASHINGTON**: Harry Robinson, Mayor. **ATTEST** and **CERTIFICATION**: Sheri Sanchez, City Clerk.

COMPLETE TEXT - CITY OF FERNDALE**RESOLUTION NO. 14-07-07-A**

A RESOLUTION OF THE FERNDALE CITY COUNCIL PROVIDING FOR A BALLOT PROPOSITION TO BE SUBMITTED TO QUALIFIED VOTERS AUTHORIZING THE IMPOSITION OF A ONE (\$0.01) CENT PER GALLON EXCISE TAX ON THE RETAIL SALE OF MOTOR VEHICLE FUEL AND SPECIAL FUEL WITHIN THE CITY LIMITS

WHEREAS, the City of Ferndale, Washington, is a “Border Area Jurisdiction” being located within ten (10) miles of a U.S./Canada border crossing; and

WHEREAS, the current year-to-year financial support for City street maintenance and construction has not been sufficient to adequately fund the City’s street maintenance and construction needs; and

WHEREAS, Title 82.47 RCW, authorizes the City to impose an excise tax of up to one cent (\$0.01) per gallon on the retail sale of motor vehicle fuel and special fuel sold within the Ferndale City Limits, if the tax is approved by the majority vote of the registered voters within the City, voting on the tax at a general or special election;

NOW THEREFORE, the City Council of the City of Ferndale do resolve as follows:

Section 1. The Ferndale City Council shall present to the Whatcom County Auditor’s Office a proposition to be placed on the ballot for the election to be held on the 4th day of November, 2014; and said proposition shall state as follows:

FERNDALE STREET CONSTRUCTION AND MAINTENANCE TAX ON THE RETAIL SALE OF MOTOR VEHICLE FUEL AND MOTOR VEHICLE SPECIAL FUEL

Shall the City of Ferndale impose a tax of up to one cent (\$0.01) per gallon on the retail sale of motor vehicle fuel and motor vehicle special fuel, exempting the first 60,000 gallons per month, per fuel station, from collection of the tax in accordance with RCW 82.47, within city limits to be used for construction and maintenance of streets as specified in Ferndale City Council Resolution No. 14-07-07-A?

YES _____

NO _____

ADOPTED at the regular meeting of the City Council of the City of Ferndale, Washington held on this 7th day of July, 2014, Mayor Gary S. Jensen. **ATTEST**: Sam Taylor, City Clerk

COMPLETE TEXT - WHATCOM COUNTY FIRE PROTECTION DISTRICT 11**Resolution No. 2014 - 224****INCREASE OF REAL PROPERTY TAX LEVY**

A RESOLUTION OF THE BOARD OF COMMISSIONERS OF WHATCOM COUNTY FIRE PROTECTION DISTRICT NO. 11, PROVIDING FOR THE SUBMISSION TO THE QUALIFIED ELECTORS OF THE DISTRICT AT A SPECIAL ELECTION TO BE HELD WITHIN THE DISTRICT ON NOVEMBER 4, 2014, IN CONJUNCTION WITH THE STATE GENERAL ELECTION TO BE HELD ON THE SAME DATE, OF A PROPOSITION AUTHORIZING A LEVY OF A PROPERTY TAX NOT TO EXCEED \$1.49 PER \$1,000.00 OF TRUE AND ASSESSED VALUATION SUBJECT TO OTHERWISE APPLICATION STATUTORY LIMITATIONS.

WHEREAS, it is the judgment of the Board of Commissioners of the District that it is essential and necessary for the protection of the health and life of the residents of the District that fire and emergency medical services be provided by the District. Such services will necessitate the expenditures of revenues for station construction, maintenance, operations, equipment and personnel in excess of those which can be provided by the District’s regular tax revenue levied at the current rate of approximately \$.65 per \$1,000.00 of assessed valuation of taxable property within the District as limited by the 101% limitation.

WHEREAS, the Board of Commissioners has determined that the one percent limit factor established by RCW 84.55.010 will not be sufficient to provide for the expected cost increases required to maintain and increase the level of services currently provided by the District.

NOW, THEREFORE, BE IT RESOLVED by the Board of Commissioners of Whatcom County Fire Protection District 11, Lummi Island, Washington as follows:

Section 1. In order to provide fire protection, prevention and emergency medical services in the District, it is necessary for the District to operate and maintain emergency fire and medical services vehicles and to construct and remodel station facilities to be staffed by properly trained personnel equipped with proper fire fighting and emergency medical equipment.

Section 2. In order to provide the revenue adequate to pay the costs of providing adequate life protection services and facilities as described in Section 1 and to maintain reserve funds sufficient to assure the continuation of such services, the District shall, in accordance with RCW 84.55.050, remove the limitation in regular property taxes imposed by RCW 84.55.010 and levy beginning in 2014 and collect beginning in 2015, pursuant to RCW 52.16.130, RCW, 52.16.140 and RCW 52.16.160, a general tax on taxable property within the District at a rate of \$1.49 per \$1,000.00 of assessed valuation subject to otherwise applicable statutory limits

Section 3. The amount levied in 2014 shall serve as the District's tax levy base for purposes of applying the limit factor established by RCW 84.55.010 in subsequent years.

Section 4. There shall be submitted to the qualified electors of the District for their ratification or rejection, at a special election on November 4, 2014, in conjunction with the state general election to be held in the same date, the question of whether or not the regular property tax levy of the District should be increased to \$1.49 per \$1,000.00 of true and assessed valuation subject to otherwise applicable statutory limitations. The Auditor of Whatcom County, as ex-officio Supervisor of Elections, is hereby requested to call such election, and to submit the following proposition at such election, in the form of a ballot title substantially as follows:

Proposition 1

Whatcom County Fire Protection District 11 – Board of Commissioners – Proposition Authorizing Increase of Previous Property Tax Levies.

The Board of Commissioners of Whatcom County Fire Protection District 11 adopted Resolution No. 2014-224 concerning a proposition to finance maintenance, operations, and capital facilities. This measure would increase the District's 2014 regular property tax levy to \$1.49 per \$1,000.00 of assessed valuation for collection in 2015. The funds generated by the levy will allow the District to keep up with inflation, replace apparatus and equipment and maintain and improve services to the community. The maximum allowable levy in 2014 shall serve as the base for subsequent levy limitations as provided by chapter 84.55 RCW.

Should this proposition be: Approved or Rejected

ADOPTED by the Board of Commissioners of Whatcom County Fire District No. 11 at a special open public meeting of such board on July 22, 2014 with the following Commissioners being present and voting. By: Wendell Terry, Chairperson; Ed Scott, Commissioner; Bill Lee, Commissioner. Attested: Lisa R Lish, Board Secretary.

COMPLETE TEXT - WHATCOM COUNTY FIRE PROTECTION DISTRICT 18

**WHATCOM COUNTY FIRE PROTECTION DISTRICT NO. 18
RESOLUTION 2014-03
RESOLUTION PROVIDING FOR THE SUBMISSION OF LEVY**

A RESOLUTION OF THE BOARD OF COMMISSIONERS OF WHATCOM COUNTY FIRE PROTECTION DISTRICT NO. 18 PROVIDING FOR THE SUBMISSION TO THE QUALIFIED ELECTORS OF THE DISTRICT AT A SPECIAL ELECTION TO BE HELD WITHIN THE DISTRICT ON NOVEMBER 4, 2014, IN CONJUNCTION WITH THE STATE GENERAL ELECTION TO BE HELD ON THE SAME DATE, OF AUTHORIZING A LEVY OF A PROPERTY TAX NOT TO EXCEED \$1.00 PER \$1,000.00 OF TRUE AND ASSESSED VALUATION SUBJECT TO OTHERWISE APPLICABLE STATUTORY LIMITATIONS.

Background: WHEREAS, it is the judgment of the Board of Commissioners of the District that it is essential and necessary for the protection of the health and life of the residents of the District that the fire and emergency medical services be provided by the District.

WHEREAS, The Board of Commissioners has determined that it will not seek renewal of its existing EMS Levy and will need to replace those revenues through its regular property tax levy.

WHEREAS, The Board of Commissioners has determined that the accelerated demands for, and increasing costs of, providing services will necessitate the expenditure of revenues for improved capital facilities, additional staffing, apparatus, maintenance and operations in excess of those which can be provided by the District's regular tax revenue levied at the current rate of approximately \$.66 per \$1,000.00 of assessed valuation of taxable property within the District as limited by the 101% limitation.

WHEREAS, The Board of Commissioners has determined that it is in the best interest of the District that the maximum allowable levy authorized by this Resolution serve as the levy base for purposes of applying the limit factor established by RCW 84.55.010 in subsequent years.

Resolution: NOW, THEREFORE BE IT RESOLVED by the Board of Commissioners of Whatcom County Fire Protection District No. 18 Whatcom County, Washington as follows:

Section 1. In order to replace the EMS levy funds, support its volunteer program and maintain and increase the level of fire protection, prevention, emergency medical services and the protection of life and property in the District, it is necessary for the District to operate and maintain emergency fire and medical service vehicles, to acquire and improve station and other capital facilities and to retain properly trained personnel equipped with proper fire fighting and emergency medical equipment.

Section 2. In order to provide the revenue adequate to pay the costs of maintaining and providing the services described in Section 1 and to assure the continuation and improvement of such services the District shall, in accordance with RCW 84.55.050, remove the limitation on regular property taxes imposed by RCW 84.55.010, and levy beginning in 2014 and collect beginning in 2015, pursuant to RCW 52.16.130 and RCW 52.16.140, a general tax on taxable property within the District at a rate of \$1.00 per \$1,000.00 of assessed valuation subject to otherwise applicable statutory limits. The District has previously levied at the \$1.00 per \$1,000.00 rate.

Section 3. The amount levied in 2014 shall serve as the District's tax levy base for purposes of applying the limit factor established by RCW 84.55.010 in subsequent years.

Section 4. There shall be submitted to the qualified electors of the District for their ratification or rejection, at a special election on November 4, 2014, in conjunction with the state primary election to be held on the same date the question of whether or not the regular property tax levy of the District should be established at \$1.00 per \$1,000.00 of true and assessed valuation, subject to otherwise applicable statutory limitations. The Board of Commissioners hereby requests the auditor of Whatcom County, as ex-officio Supervisor of Elections, to call such election, and to submit the following proposition at such election, in the form of a ballot title substantially as follows:

Whatcom County Fire Protection District No. 18
Board of Commissioners
Proposition Restoring Property Tax Levy For Fire Protection
and Emergency Medical Services.

The Board of Whatcom County Fire Protection District No. 18 adopted Resolution No. 2014-03 concerning a proposition to maintain and adequately fund the District's operations.

This proposition authorizes the District to restore its regular property tax levy at \$1.00 per \$1,000 of assessed value to be assessed in 2014 and collected in 2015. The funds will maintain and improve fire protection and emergency medical service levels and replace the funds lost due to the expiring EMS levy. The maximum allowable levy in 2014 shall serve as the base for subsequent levy limitations as provided by chapter 84.55 RCW.

Should this proposition be:

Approved

Rejected

Adoption: ADOPTED by the Board of Commissioners of Whatcom County Fire Protection District No. 18 Whatcom County, Washington, at a special open public meeting of such Board on the 10th day of July 2014, the following Commissioners being present and voting: Socorro Ruiz, Commissioner; Tari Caswell, Commissioner; Patrick Bistline, Commissioner. Attest: Kelenia S. Crowe.

COMPLETE TEXT - LYNDEN REGIONAL PARK AND RECREATION DISTRICT 3

RESOLUTION NO. 2014-1

A RESOLUTION of the Board of Commissioners of Lynden Regional Parks and Recreation District, Washington, providing for a form of the ballot proposition and specifying certain other details concerning submission to the qualified electors of the District at a special election to be held therein on November 4, 2014 of propositions authorizing the District to issue its general obligation bonds in the aggregate principal amount of not to exceed \$1,000,000 for the purposes of providing funds for the construction of restroom facilities, adding parking areas and improving and paving existing parking areas utilized for the District's Bender Road property.

WHEREAS, the best interests and welfare of the inhabitants of the Lynden Regional Parks and Recreation District, Washington (the "District") requires the District to install restroom facilities, add parking areas and improve and pave existing parking areas utilized for the District's Bender Road property (the "Project"); and

WHEREAS, in order to provide all or a part of the funds to enable the District to undertake the Project, it is deemed necessary and advisable that the District issue and sell its unlimited tax general obligation bonds to provide funds for such purpose; and

WHEREAS, the Constitution and laws of the State of Washington provide that the question or whether or not such bonds may be issued and sold for such purposes must be submitted to the qualified electors of the District for their ratification or rejection;

NOW, THEREFORE, THE BOARD OF COMMISSIONERS OF THE LYNDEN REGIONAL PARKS AND RECREATION DISTRICT, WASHINGTON, DOES RESOLVE, as follows:

Section 1. Findings. This Board of Commissioners (the "Board") hereby finds and declares that the best interest of all the people of the District requires the District to carry out the plans hereinafter provided at the time or times and in the order deemed most necessary and advisable by the Board.

Section 2. Authorization of Park Project and Bonds. The District shall undertake the design and construction of restroom facilities, adding parking areas and improving and paving existing parking areas utilized for the District's Bender Road property.

The District shall determine the application of available moneys to the Project so as to accomplish, as nearly as may be, the project provided for in this section. If the District shall determine that it has become impracticable to accomplish such Project or portions thereof by reason of changed conditions or needs, incompatible development, costs substantially in excess of those estimated, or acquisition by a superior governmental authority, the District shall not be required to accomplish such Project and may apply bond proceeds as set forth in this section.

If the Project has been completed, or its completion duly provided for, or its completion found to be impractical, the District may apply the bond proceeds or any portion thereof to other capital purposes of the District, or to payment of principal or interest on the bonds, as the Board in its discretion shall determine.

In the event that the proceeds of the sale of the bonds, plus any other moneys of the District legally available, are insufficient to accomplish the Project provided for by this section, the District shall use the available funds for paying the cost of planning for the Project for which the bonds were approved deemed by the Board most necessary and in the best interest of the District, and may apply unexpended Bond proceeds to the payment of principal or interest on the bonds.

Section 3. Authorization of Bonds. For the purpose of providing all or a part of the funds necessary to pay the cost of the Project, together with incidental costs and costs related to the sale and issuance of the bonds, the District shall issue and sell its

unlimited tax general obligation bonds in the principal amount of not to exceed \$1,000,000. The balance of the cost of the Project shall be paid out of any money which the District now has or may later have on hand which are legally available for such purposes. None of said bond proceeds shall be used for the replacement of equipment or for any other than a capital purpose. Such bonds shall be issued in an amount not exceeding the amount approved by the qualified electors of the District as required by the Constitution and laws of the State of Washington or exceeding the amount permitted by the Constitution and laws of the State of Washington. After voter approval of the bond proposition and in anticipation of the issuance of such bonds, the District may issue short term obligations as authorized and provided by Chapter 39.50 RCW.

Section 4. Details of Bonds. The bonds provided for in Section 3 hereof shall be sold in such amounts and at such time or times as deemed necessary and advisable by this Board and as permitted by law, shall bear interest at a rate or rates not to exceed the maximum rate permitted by law at the time the bonds are sold, and shall mature in such amounts and at such times within a maximum term of twenty (20) years from the date of issue, but may mature at an earlier date or dates, as authorized by this Board and as provided by law. Said bonds shall be general obligations of the District and, unless paid from other sources, both principal thereof and interest thereon (including original issue discount) shall be payable out of annual tax levies to be made upon all the taxable property within the District without limitation as to rate or amount and in excess of any constitutional or statutory tax limitations. The exact date, form, terms and maturities of said bonds shall be as hereafter fixed by resolution of the Board of Commissioners. After voter approval of the bond proposition or propositions and in anticipation of the issuance of such bonds, the District may issue short term obligations as authorized and provided by Chapter 39.50 RCW.

Section 5. Bond Election. It is hereby found and declared that the best interests of the District requires the submission to the qualified electors of the District of the proposition of whether the District shall issue the Bonds at an election to be held on the 4th day of November, 2014.

The Whatcom County Auditor as ex officio supervisor of elections in Whatcom County, Washington, is hereby requested to call and conduct the election to be held by all mail-in ballot within the District and to submit to the qualified electors of the District the proposition set forth below. The Secretary of the Board is hereby authorized and directed to certify the proposition to said officials in the following form:

PROPOSITION NO. 1
LYNDEN REGIONAL PARKS AND RECREATIONAL DISTRICT
RESTROOM AND PARKING LOT CONSTRUCTION BONDS -
\$1,000,000

The Board of Commissioners of Lynden Regional Parks and Recreation District, Washington, passed Resolution No. 2014-1 concerning this proposition which authorizes the District to install restroom facilities, add parking areas and improve and pave existing parking areas utilized for the District's Bender Road property, to issue \$1,000,000 of general obligation bonds maturing within a maximum term of 20 years to finance said project, and to levy property taxes annually in excess of regular property tax levies to repay such bonds, all as provided in Resolution No. 2014-1. Should this proposition be:

APPROVED ?

REJECTED ?

APPROVED by the Board of Commissioners of Lynden Regional Parks and Recreation District, Washington, at a special meeting thereof held the 31st day of July, 2014.
LYNDEN REGIONAL PARKS AND RECREATIONAL DISTRICT,
WASHINGTON: Terry R. DeValois, Chairman and Commissioner;
Hank Roorda, Commissioner; Kevin Burke, Commissioner; Robert Bandarra, Commissioner; Ronald VanSoest, Commissioner.
ATTEST and CERTIFICATION: Kevin Burke, Secretary of the Board District Secretary.