

Sample Ballot
Whatcom County, Washington
Special Election - April 23, 2024

Instructions

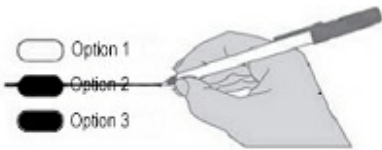
How to vote



Use a pen to fill in the circle next to your choice.

Vote for one. If you choose more than one without making a correction, no vote will be counted for that question.

How to correct a vote



If you make a mistake, draw a line through the entire incorrect choice. You may then make another choice.

Public Disclosure Commission

For a list of the people and organizations that donated to state and local candidates and ballot measure campaigns, visit www.pdc.wa.gov

Fire Protection District 17

Proposition 2024-15
Authorizing Regular Property Tax Levy

The Board of Fire Commissioners of Fire Protection District 17 (the "District"), adopted Resolution No. 374 concerning the District's regular property tax levy. This measure would authorize a regular property tax levy of \$1.25 per \$1,000.00 of assessed valuation in 2024 (for collection in 2025), and the resulting levy dollar amount would thereafter be used for the purpose of computing the limitations for subsequent levies under RCW 84.55.050.

Should this proposal be approved?

- Yes
 No

What is a Sample Ballot?

A Sample Ballot shows all the contests and questions included in the election. Not all contests will be on your ballot.