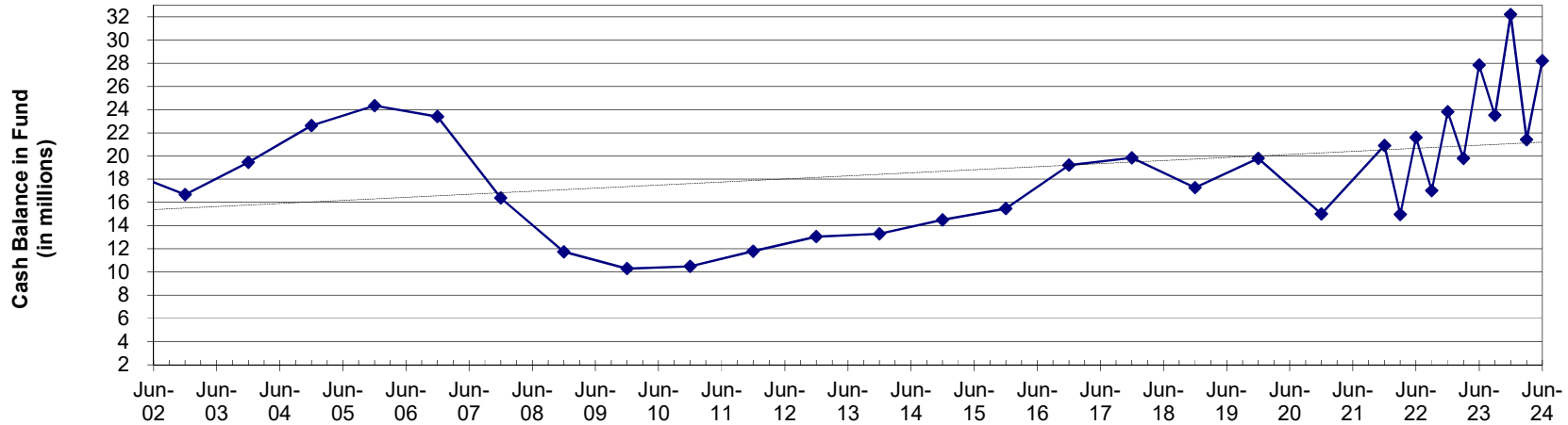


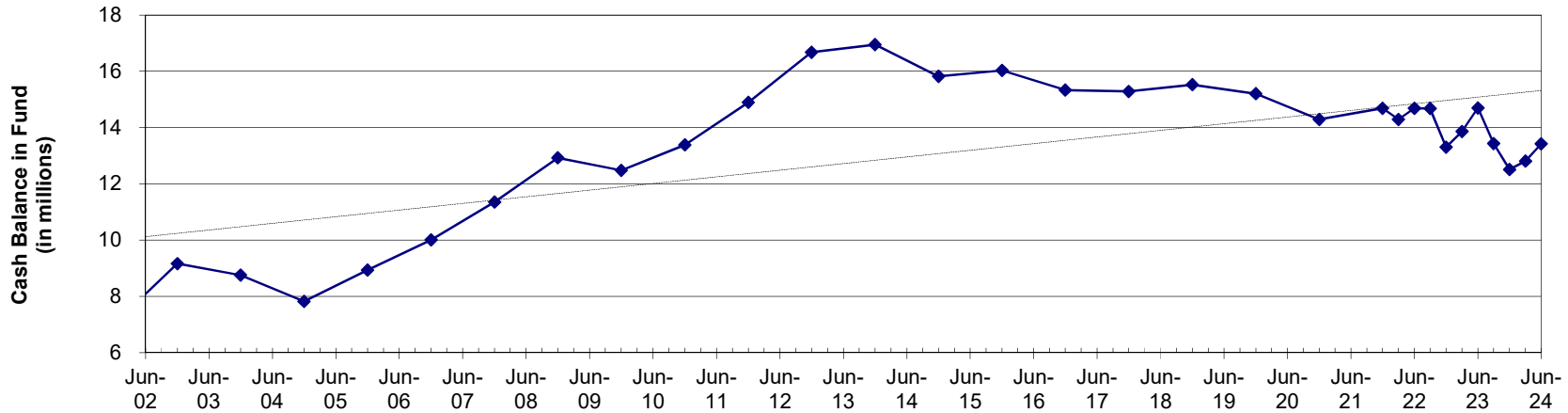
CASH BALANCES BY FUND

As of June 30, 2024

General Fund Fund 1



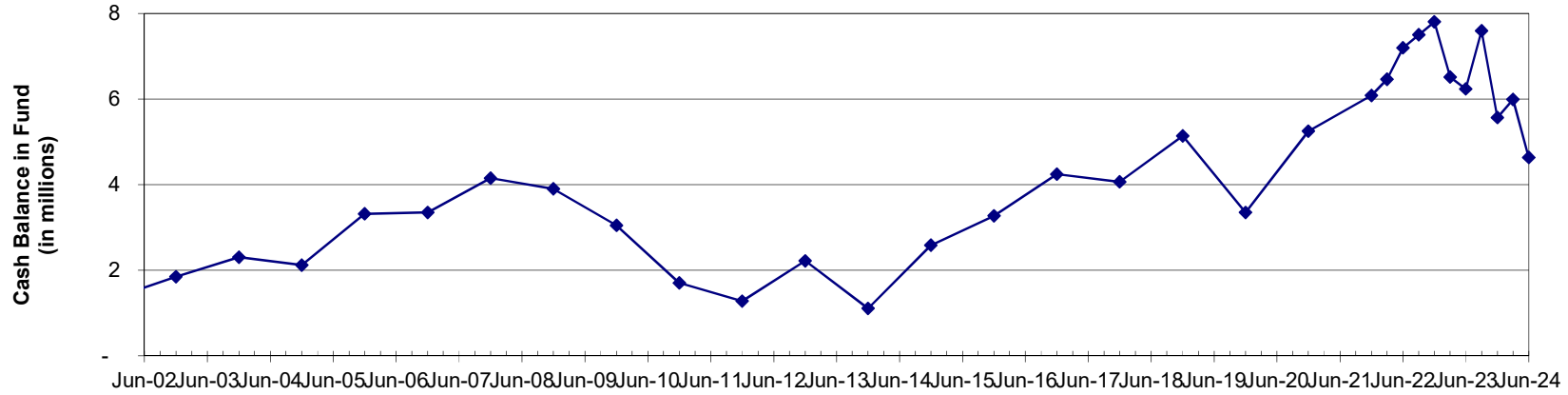
Administrative Services Fund 507



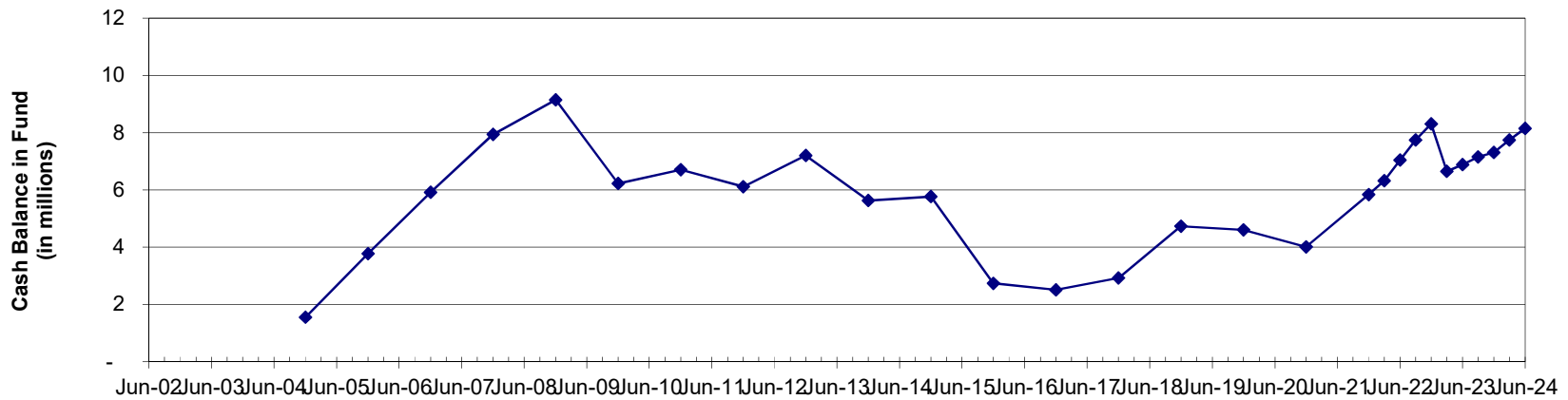
CASH BALANCES BY FUND

As of June 30, 2024

REET I Fund 326



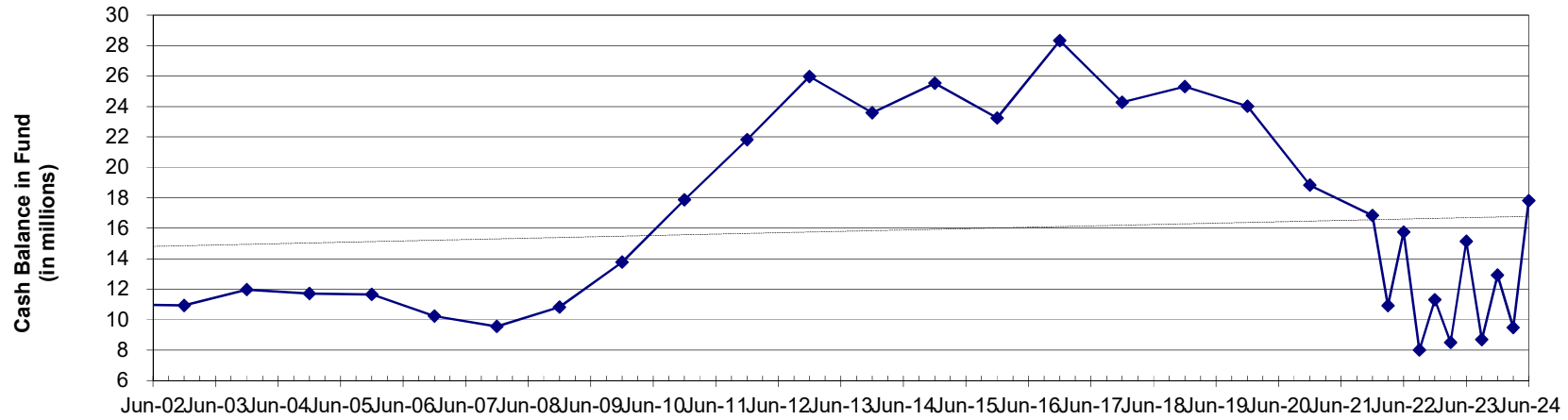
REET II Fund 324



CASH BALANCES BY FUND

As of June 30, 2024

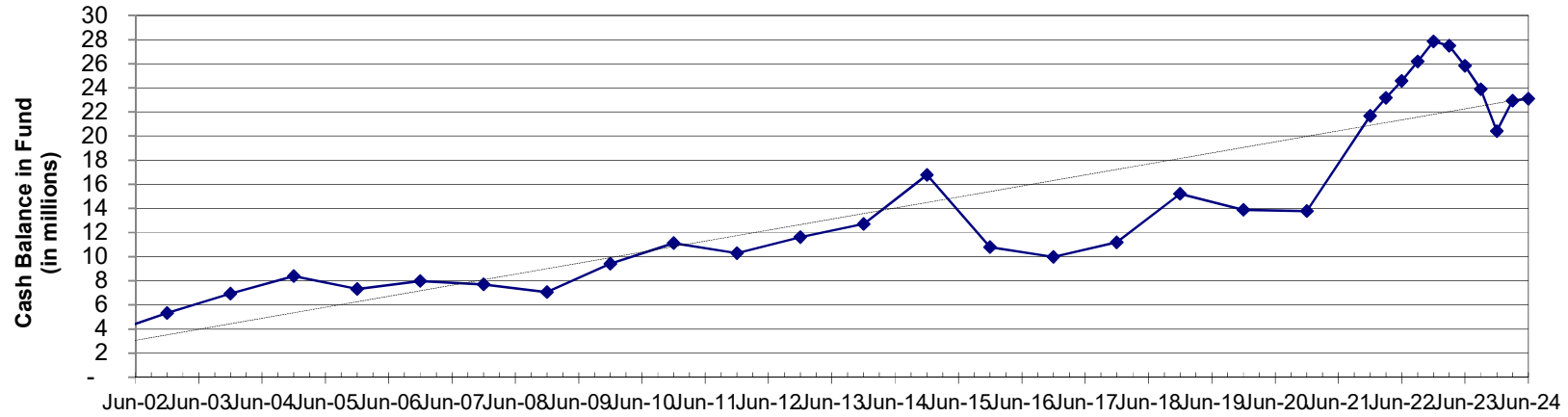
County Road Fund 108



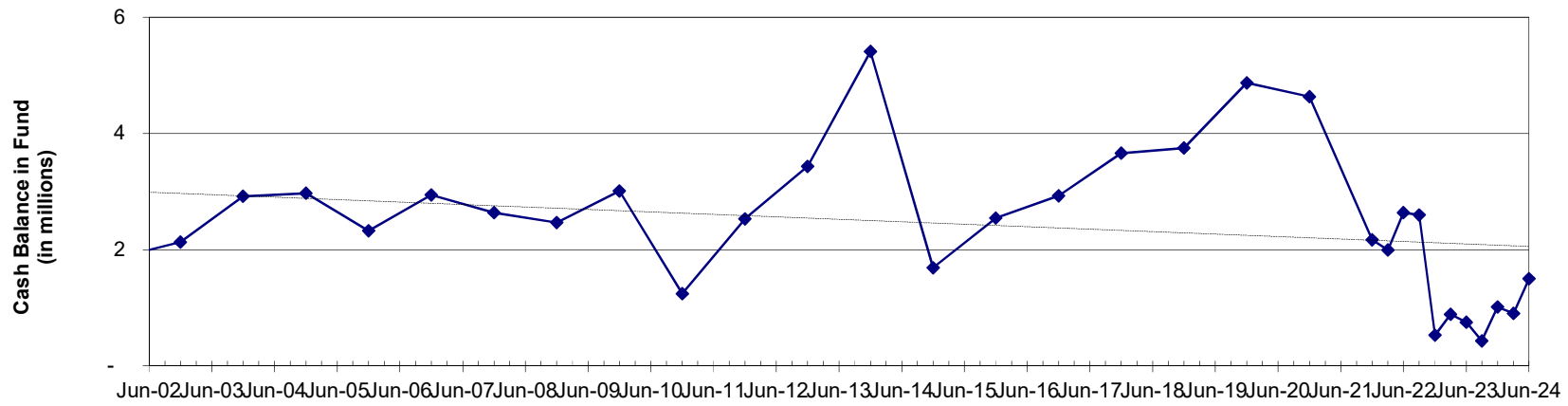
CASH BALANCES BY FUND

As of June 30, 2024

Public Utility Improvement Fund 332



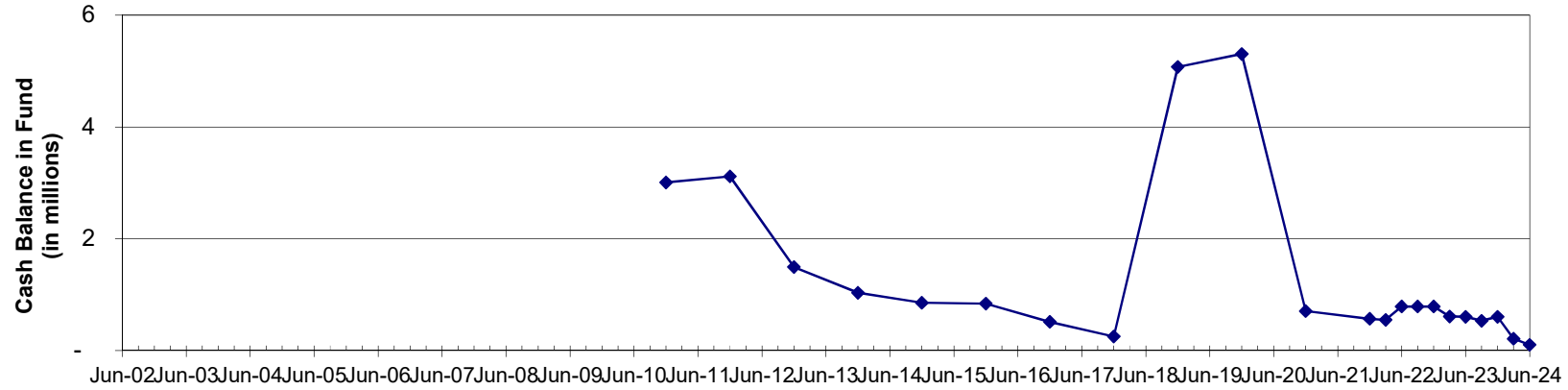
Conservation Futures Fund 175



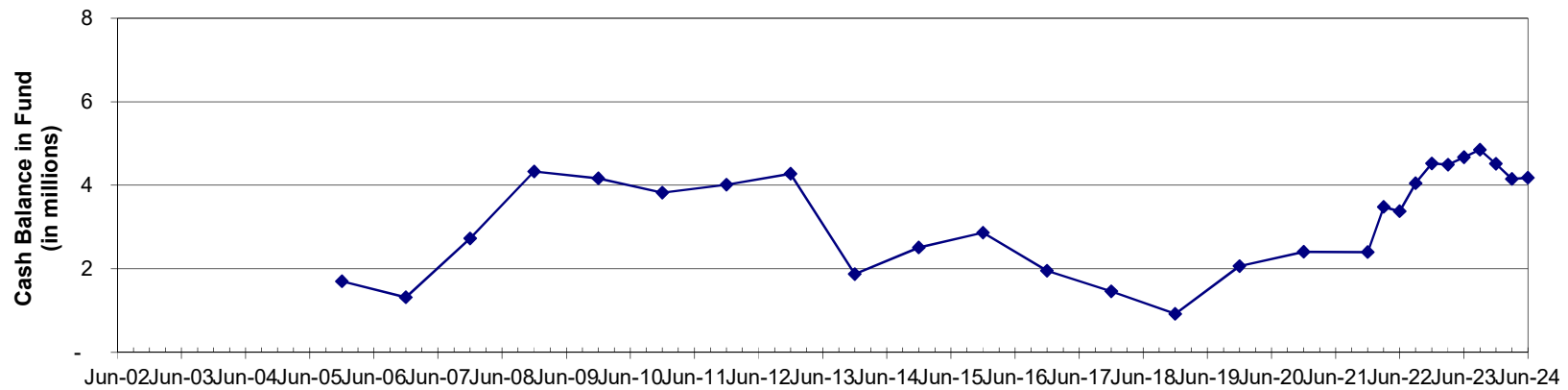
CASH BALANCES BY FUND

As of June 30, 2024

Jail Improvement Fund 337



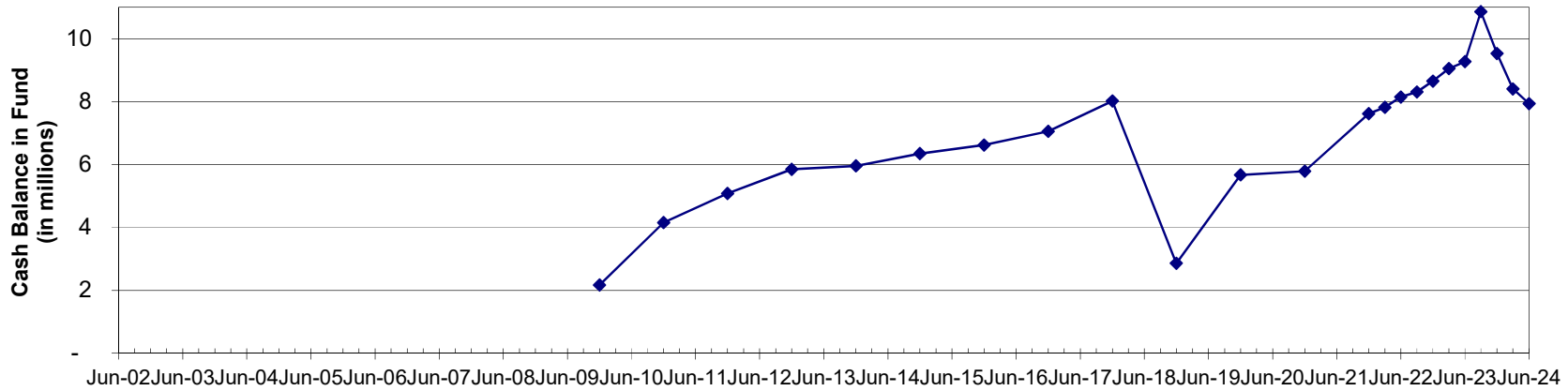
WC Jail Fund 118



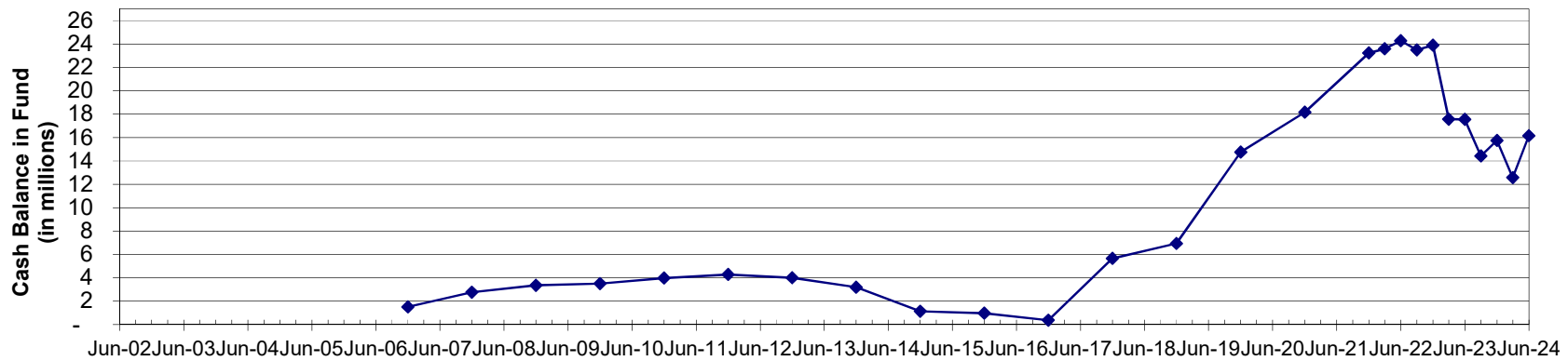
CASH BALANCES BY FUND

As of June 30, 2024

Chemical Dependency/Mental Health Fund 124



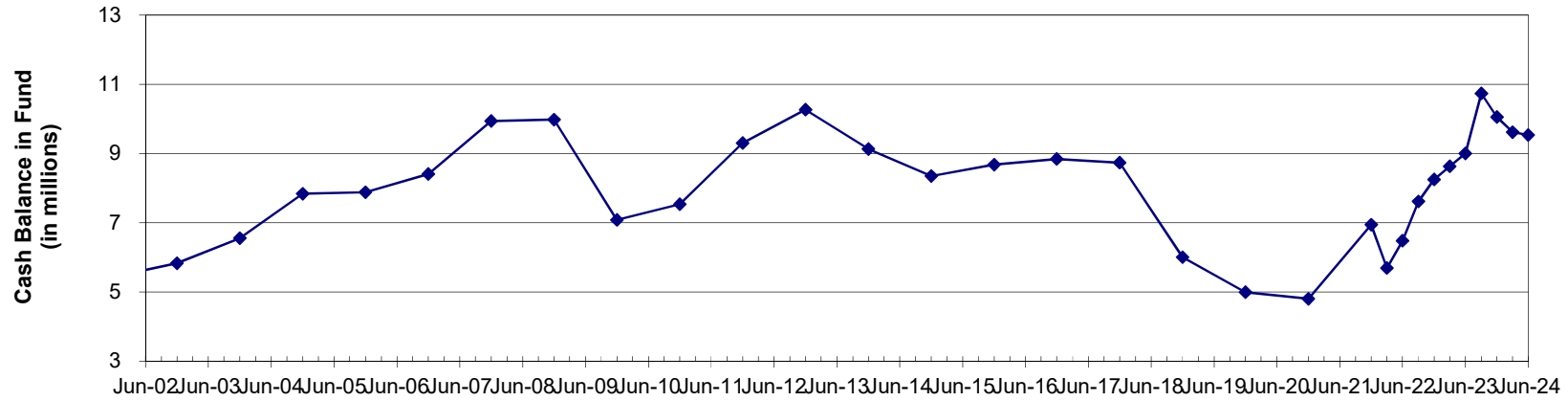
Countywide EMS Fund 130



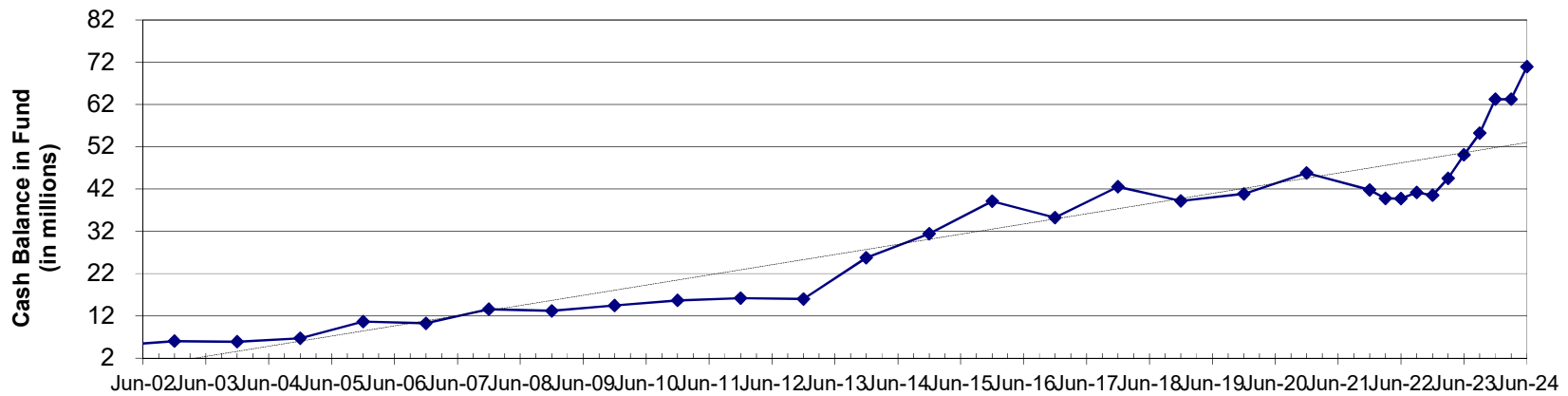
CASH BALANCES BY FUND

As of June 30, 2024

ER&R Fund 501



All Remaining County Funds



CASH BALANCES BY FUND
As of June 30, 2024

FUND	12/31/01	12/31/02	12/31/03	12/31/04	12/31/05	12/31/06	12/31/07	12/31/08	12/31/09	12/31/10	12/31/11	12/31/12	12/31/13	12/31/14	12/31/15	12/31/16	12/31/17	12/31/18	12/31/19	12/31/20	12/31/21	12/31/22	6/30/23	9/30/23	12/31/23	6/30/24	change in balance since 2008			
1 Current Expense	18,815,078	16,606,120	19,400,792	22,023,991	24,343,432	23,302,251	16,397,867	11,733,433	10,266,471	10,485,880	11,763,269	13,059,489	13,300,031	14,463,801	15,458,641	19,208,232	19,880,780	17,274,538	18,884,533	15,004,960	20,917,115	23,803,105	19,796,961	27,084,873	22,208,090	22,086,465	21,431,214	28,218,038	16,458,602	
100 County Jail	10,960,125	10,926,810	11,957,731	11,707,853	11,649,943	10,233,428	9,541,155	10,824,077	13,773,753	17,863,727	21,814,517	25,960,126	23,988,625	25,528,303	23,244,165	24,283,978	25,269,442	24,019,062	18,835,697	16,829,676	11,205,966	8,496,865	15,133,291	8,676,767	12,931,642	4,469,846	17,816,389	6,992,292	10,390,394	
101 WC Landfill	-	-	-	-	-	-	-	-	-	-	-	-	-	-	-	-	-	-	-	-	-	-	-	-	-	-	-	-	-	
124 Child Support/Mental Hlt	-	-	-	-	-	-	-	-	-	-	-	-	-	-	-	-	-	-	-	-	-	-	-	-	-	-	-	-	-	
130 Countywide EMS	-	-	-	-	-	-	-	-	-	-	-	-	-	-	-	-	-	-	-	-	-	-	-	-	-	-	-	-	-	
160 Food Court Control	10,194,831	9,124,789	8,902,003	8,252,727	8,690,177	6,644,370	7,088,809	7,186,447	7,096,114	8,527,639	10,032,906	11,887,817	11,458,330	11,827,277	10,894,908	8,698,842	8,629,560	9,300,576	9,300,576	9,300,576	9,300,576	9,300,576	9,300,576	9,300,576	9,300,576	9,300,576	9,300,576	9,300,576	9,300,576	9,300,576
171 Connors Fisheries	1,528,320	5,319,084	6,940,613	8,389,450	7,312,960	2,643,018	2,465,748	3,007,202	1,242,671	2,526,276	2,452,008	1,686,667	1,507,214	1,586,672	1,586,672	1,586,672	1,586,672	1,586,672	1,586,672	1,586,672	1,586,672	1,586,672	1,586,672	1,586,672	1,586,672	1,586,672	1,586,672	1,586,672	1,586,672	1,586,672
304 REIT #	7,011,539	9,162,539	8,754,309	7,826,753	8,938,808	5,914,410	7,943,719	8,150,226	6,220,627	6,713,238	6,112,428	7,206,479	5,631,892	5,705,549	2,735,449	2,735,449	2,735,449	2,735,449	2,735,449	2,735,449	2,735,449	2,735,449	2,735,449	2,735,449	2,735,449	2,735,449	2,735,449	2,735,449	2,735,449	2,735,449
333 PublicMkt Util Imp	6,443,369	6,928,893	6,956,840	7,843,933	7,881,201	3,351,294	4,153,723	3,989,274	4,048,484	3,704,002	1,276,162	2,215,462	1,105,137	1,057,267	1,057,267	1,057,267	1,057,267	1,057,267	1,057,267	1,057,267	1,057,267	1,057,267	1,057,267	1,057,267	1,057,267	1,057,267	1,057,267	1,057,267	1,057,267	1,057,267
33 PublicMkt Util Imp	8,856,375	2,127,389	2,917,424	2,971,305	2,921,455	7,998,196	7,051,148	8,416,489	11,118,023	10,288,162	11,628,748	12,707,743	11,788,382	10,968,002	11,788,382	11,788,382	11,788,382	11,788,382	11,788,382	11,788,382	11,788,382	11,788,382	11,788,382	11,788,382	11,788,382	11,788,382	11,788,382	11,788,382	11,788,382	11,788,382
501 ERAP Imp	-	-	-	-	-	-	-	-	-	-	-	-	-	-	-	-	-	-	-	-	-	-	-	-	-	-	-	-	-	-
501 Admin Services	1,346,876	1,849,396	2,307,204	2,179,105	1,807,860	1,331,554	1,339,426	1,298,342	1,274,897	1,382,323	14,898,266	16,681,983	16,948,274	15,825,434	16,025,991	15,322,395	15,292,388	15,292,388	15,292,388	15,292,388	15,292,388	15,292,388	15,292,388	15,292,388	15,292,388	15,292,388	15,292,388	15,292,388	15,292,388	15,292,388
502 Admin Services	4,946,060	6,050,265	5,896,325	6,077,199	10,038,866	11,783,021	12,832,765	13,188,103	14,432,135	15,098,479	16,161,960	15,085,056	25,741,348	31,429,345	38,154,511	35,548,944	39,167,465	40,856,522	43,823,039	41,771,972	40,513,631	44,600,419	50,081,682	45,243,942	49,208,723	49,208,723	49,208,723	49,208,723	49,208,723	
ALL FUNDS TOTAL	64,133,393	67,004,135	73,753,241	79,959,958	80,975,000	61,066,716	62,215,305	62,710,222	61,691,658	65,555,813	116,414,853	129,940,076	137,069,077	146,087,386	145,051,918	147,712,616	156,208,630	156,537,080	168,679,862	162,470,536	177,486,817	184,897,993	172,615,255	183,555,507	184,057,641	200,268,038	180,997,022	207,235,919	114,525,697	
Other County Funds	31,344	172,447	90,323	66,941	597,856	110,999	359,508	222,140	152,938	82,605	74,524	216,850	115,862	350,343	365,445	533,157	377,268	343,847	457,380	937,796	785,679	875,336	1,093,243	1,203,583	681,059	623,276	618,668	1,356,942	1,134,802	
109 Election Revenue	87,476	129,739	124,303	179,868	249,514	335,473	458,763	623,249	790,791	891,329	899,690	788,589	683,719	633,029	634,075	624,706	691,864	717,744	759,834	1,059,024	1,102,448	1,102,448	1,102,448	1,102,448	1,102,448	1,102,448	1,102,448	1,102,448	1,102,448	1,102,448
110 Treasurer's DMF	1,187	13,331	26,178	28,910	31,392	59	64	71	81	244	244	244	244	244	244	244	244	244	244	244	244	244	244	244	244	244	244	244	244	244
114 Treasurer's DMF	114,962	118,702	143,928	207,222	193,660	195,196	249,024	198,561	248,176	306,108	309,141	396,940	467,268	519,987	588,767	627,196	669,003	720,587	801,900	913,220	832,200	899,048	881,523	948,733	860,734	800,734	804,321	708,740	708,740	708,740
121 Low Income Hsg	-	-	-	-	-	-	-	-	-	-	-	-	-	-	-	-	-	-	-	-	-	-	-	-	-	-	-	-	-	-
122 Homeless Hsg	-	-	-	-	-	-	-	-	-	-	-	-	-	-	-	-	-	-	-	-	-	-	-	-	-	-	-	-	-	-
123 Stimulator	-	-	-	-	-	-	-	-	-	-	-	-	-	-	-	-	-	-	-	-	-	-	-	-	-	-	-	-	-	-
124 Public Special Revenue	-	-	-	-	-	-	-	-	-	-	-	-	-	-	-	-	-	-	-	-	-	-	-	-	-	-	-	-	-	-
129 Affordable & Supportive Housing	-	-	-	-	-	-	-	-	-	-	-	-	-	-	-	-	-	-	-	-	-	-	-	-	-	-	-	-	-	-
133 Trial Court Imp	-	-	-	-	-	-	-	-	-	-	-	-	-	-	-	-	-	-	-	-	-	-	-	-	-	-	-	-	-	-
137 LEIFF # Healthcare	163,897	1,288,966	1,347,846	1,391,105	1,387,633	1,414,633	1,303,817	1,338,832	1,316,183	1,270,669	1,418,223	1,431,481	1,683,937	1,983,234	2,163,303	2,481,713	2,431,783	2,802,971	3,259,816	3,817,841	4,281,150	5,363,919	6,816,124	6,081,188	6,231,363	6,436,088	6,644,966	6,876,127	6,238,296	6,238,296
141 Convention Center	232,285	248,631	253,902	263,677	263,380	315,202	333,057	600,619	822,779	1,021,566	1,161,150	1,227,404	1,213,291	1,312,124	1,375,522	1,403,362	1,498,582	1,702,143	1,908,395	2,135,964	2,418,389	3,621,739	3,621,739	3,621,739	3,621,739	3,621,739	3,621,739	3,621,739	3,621,739	3,621,739
145 Healthy Children Fund	-	-	-	-	-	-	-	-	-	-	-	-	-	-	-	-	-	-	-	-	-	-	-	-	-	-	-	-	-	-
154 199 RFD #17	50,114	50,673	50,479	52,094	53,455	54,777	52,015	53,246	55,155	46,698	44,147	42,600	30,331	36,574	24,800	30,331	39,406	51,192	25,065	29,236	40,963	42,414	37,722	32,400	41,832	5,658,610	8,861,311	10,981,843	15,429,851	251,940
165 WC Drug Fund	666,598	600,566	1,133,047	1,025,401	1,249,492	1,201,963	905,008	762,720	577,842	212,265	63,600	317,634	150,750	147,422	757,702	403,935	799,953	576,870	1,588,310	1,577,733	1,624,153	1,538,188	1,668,338	1,522,327	1,638,802	1,636,724	1,687,873	1,704,283	941,563	941,563
166 Auditor's OMB	384,927	504,202	609,378	542,133	493,527	462,168	544,462	600,376	617,128	513,910	512,910	497,590	399,566	378,134	412,888	403,749	419,118	445,235	505,281	568,239	748,512	699,956	623,456	624,485	690,937	991,524	498,077	453,761	54,615	54,615
167 Emergency Mgmt	136,072	171,869	108,253	59,033	62,003	137,934	113,511	76,766	88,657	2,460	24,882	27,803	131,634	116,963	134,355	163,359	248,817	133,545	180,713	208,458	330,290	348,314	1,046,244	536,180	5,700,920	5,339,628	5,339,628	5,339,628	5,339,628	5,339,628
170 PR Roberts Fuel Tax	51,800	79,551	97,698	132,976	176,665	205,541	311,796	347,660	460,598	481,895	580,632	696,683	750,091	836,243	901,108	968,877	1,050,188	1,109,401	1,126,309	1,126,498	1,146,299	1,164,760	1,175,173	1,181,263	1,190,391	1,210,262	1,219,406	1,219,406	1,219,406	1,219,406
210 246 Debt Service	547,000	249,227	141,527	206,792	216,464	220,491	220,959	221,412	16																					